

UFO Invades Primary School!!!

or just an elaborate hoax??

A class of Year 5 pupils from Isleham Primary School have investigated a very suspicious scene witnessed by the school caretaker (Mr Patterson). It took place Sunday 17th of March at 4pm. P.C. Lloyd was second to the scene and called Year 5 to investigate on the field.

The scene included an upturned, picnic table in the area of the accident. The aged, birch trees were nearby with silver, glistening foil caught up. A corroded, wrecked remaining piece of the UFO (unidentified flying object) was left in the taped off area. The patterned, hazard tape surrounded the scene of the accident. The rotting, historical woodchip had been scattered around the bark area. Mr Patterson quoted 'It was the biggest shock I'd ever experienced.'

Some burnt out rope was attached to the remaining UFO. Detested, left over debris had remained in the area for investigation. A towering, nearby crane had been used to clear away the rest of the debris. Mr Patterson mentioned he first went to check it out after a call from nearby Jubilee Close residents. He also caught some footage, helping Year 5 investigate.

P.C. Lloyd said 'This is the most peculiar call I'd received in a period of time.'

Mrs Gibbs said 'That's not what I expected on a Monday morning.'

Anais B, Student Reporter



Did you see anything?

Go to :-

www.isleham.cambs.sch.uk

for more.



www.tfmbutchers.co.uk

TFM Butchers
Fenrose Farm
1 Fen Bank
Isleham CB7 5SL.
Tel: 01638 780994/780431
info@tfmbutchers.co.uk

The Home of 'Isleham Blue Pork™'

Family run Farm proudly breeding, rearing AND ONLY selling our
OWN Beef, Pork, Lamb, Goat and Chicken! 100% traceability at High Street Prices!!

What's happening in 2019?

Re-Launch of our very popular
'Monthly Best Buy Pack for £25'



And our
'Little Meat Box'
What's inside?

Also, why not come and see us at a Farmers Market:
The Steakhouse in Redlodge - 1st Saturday
The Beeches, Isleham - 3rd Saturday
Village Hall, Freckenham - 4th Saturday of the Month.

Farm Shop Opening Times:

Tuesday: 10am-5.30pm

Thursday: 9am-5.30pm

Friday: 9am-5.30pm

Saturday: 9am-4pm

Sunday: 10am-12noon

Monday and Wednesday - CLOSED



The Isleham Society

16th May 2019

7.15 for 7.30pm start

"The Grange Musical Collection"

A talk and demonstrations by:
Jonny Ling



**JOIN US AT THE
'THE BEECHES' ALL WELCOME**

Followed by Refreshments and a draw
Cost for Non Members - £2

MANCHETTS
VEHICLE SALES & SELF-DRIVE VAN HIRE CENTRE



LDV

ISUZU

Leasing, Contract Hire and
Hire Purchase available

LDV Van Sales
**V80 SCRAPPAGE
SCHEME**

TOWARDS A NEW V80 IDV VAN

WWW.MYLDV.CO.UK

Self drive van hire from £30 per half day
VANS & TIPPERS AVAILABLE

Manchett's Vehicle Sales and Self Drive Van Hire Centre

Tel: 01638 674491

Unit 15, Victoria Way, Newmarket, Suffolk, CB8 7SH

Established 2010

**AWARD WINNING
DRIVEWAY
INSTALLERS**

BUILDING & LANDSCAPING

**AMS
LTD**

**FULLY
TRAINED
TEAM**

We own all our equipment
making us a reliable and
self sufficient company
based in Newmarket

- All Driveways & Block Paving
- Patios and Paths
- Driveway Cleaning
and Sealing
- Fencing and Decking
- Turfing and Seeding
- Site and Garden Clearance
- Grab Hire and Mini Grab Hire

**CALL FOR FREE ESTIMATES
AND BOOKINGS**
Office: 01638 721893
Site: 07789 261266

All work comes with a
minimum 5yr guarantee
(10yr guarantee for products)

NEWMARKET, CAMBRIDGE AND ELY

Yell **Marshall's
REGISTER** **BRADSTONE
Assured** **LETT** **built on relationships**

Please visit our website for examples of our work & refs:
www.amsbuildingandlandscaping.co.uk
@amsbuildandland **f amsbuildingandlandscaping**



The *Isleham Informer* is published six times a year, every other month.

CONTACTS • Advertising Emma Joy-Staines T: 07809244895 E: emmajoystaines@yahoo.co.uk • **Design & layout** Clive Patterson T: 07771830336 E: patterson.clive@gmail.com • **Features** Glenda Preece T: 01638 780734 E: gjpreece@aol.com • **Distribution** Fred Preece T: 01638 780734 • **Published by** Isleham Parish Council • **Printed by** Gipping Press www.gippingpress.co.uk

NEXT ISSUE: Published June 2019 The deadline for all editorial and advertising is 9th May 2019

DISCLAIMER: The *Informer* would like to point out that we have neither tried nor tested all of the products and services advertised in these pages and therefore cannot accept responsibility for the veracity of any claims made.

Useful Information

Mobile Library

	Arrive	Depart
2nd Wednesday Church Street	12.15pm	1.00pm
3rd Thursday Mill Street	3.15pm	4.15pm
4th Wednesday Church St	9.45am	10.10am

Useful phone numbers

Emergency for Police, Fire, Ambulance	999
Police (Non-emergency).....	101
Accident & Casualty (Addenbrooke's).....	01223 217118
Addenbrooke's Hospital (Cambridge).....	01223 245151
Newmarket Hospital	01638 564000
West Suffolk Hospital (Bury St Edmunds).....	01284 713000
Staploe Medical Centre (Soham)	
- Appointments.....	01353 624121
- Prescriptions & Dispensary.....	01353 727695
- Enquiries, Home Visits, Emergencies.....	01353 624123
Minor Treatment Centre, Ely.....	01353 656675
NHS Direct (for advice).....	0845 4647
GP Out-Of-Hours (non-emergency)	111
Electricity Emergencies	0800 7838838
Gas Emergencies.....	0800 111999
Anglian Water Leaks	0800 771881
- 24 hour	0845 7145145
Social Services - office hours.....	0345 0455202
- out of hours emergency	01733 561370
Refuse Collection.....	01353 665555
RSPCA	07599 522716
- Cruelty line.....	0300 1234 999
Citizens Advice Bureau	Ely 0845 130 6442
	Mildenhall 01638 712094
	Newmarket 01638 665999
District Councillor: Derrick Beckett.....	01638 780476
Parish Council Clerk: Richard Liddington	01638 781687
MP: Lucy Frazer.....	lucy.frazer.mp@parliament.uk

Dates for Your Diary

If there is anything you would like included here for future issues: contact Glenda Preece, T: 01638 780734 E: gjpreece@aol.com.

REGULARS

Coffee Morning at the Social Centre, Tuesdays 9am-noon

Bingo at the Bowls Club every Wednesday evening

Contact Doreen 780836

April

Mon 1st	Parish Council	The Beeches	7.15pm
Thur 11th	WI	The Beeches	7.30pm
Fri 12th	Book Club	The Beeches	2pm
Sat 13th	Queen Tribute Night		
Tue 16th	Booze & Brushes	The Beeches	7-9pm
Thurs 18th	Isleham Society	The Beeches	7.30pm
Sat 20th	Farmers Market	The Beeches	10-12noon

May

Thur 2nd	Polling Day	The Beeches	
Thur 9th	W.I.	The Beeches	7.30pm
Fri 10th	INFORMER DEADLINE		
Mon 13th	Parish Council	The Beeches	7.15pm
Fri 15th	Book Club	The Beeches	2pm
Thur 16th	Isleham Society	The Beeches	7.30pm
Sat 18th	Farmers Market	The Beeches	10-12noon

Village Notes

Soham Museum presents Hilary Ritchie and "The Story of Addenbrookes". Thursday May 2nd at 7.30pm, Berrycroft, Methodist Church Hall, off Pratt Street, Soham. Members free, non members £3.

Soham Museum coffee morning, held on the first Saturday of each month at Soham Library, drop in between 10am-12 noon, all welcome.

A message of thanks

Thank you to everyone who supported the coffee morning on Saturday 3rd March. The coffee morning raised £300.83 and with £450 sponsorship for the Cambridge half marathon, which I completed on Sunday morning, a total of £750 was raised through the generosity and support of the residents of Isleham. The event was part of my fund raising for East Anglian Air Ambulance and has been combined with the fundraising of my colleagues who also ran the Cambridge half, raising over £10,000.00 for the Air Ambulance. Thank you once again for your support.

Kathy Carver



Massage Therapy



Massage can manage back, neck and shoulder pain →
 reduce muscle tension → reduce inflammation → help
 boost your immune system → ease symptoms of anxiety,
 stress and depression → improve sleep


Techniques:

- **Therapeutic**
- **Deep Tissue**
- **Cupping Therapy**
- **Manual Lymphatic Drainage**
- **Myofascial Release**

For an appointment or more information please
 contact me, Lisa Milne at

lisamilnemassage@gmail.com

01638 780186 or 07711 699920

 Meadowview Massage

Member of FHT - Fully insured

Notes from The Editor

Hoping that everyone enjoyed the very unseasonal weather at the end of February and welcome to the April edition.

This is my second edition and I am hoping to make improvements to the print quality of the adverts as some are a bit fuzzy.

We have also had a quiz from the Isleham Society (just for fun) have a go and see how much you know about the village, please don't be afraid to approach any of the committee as they are always after new members..

I hope you enjoy this April edition with the variety of articles and photographs from the village groups

Thanks must also go to all that contribute articles and pictures, (we are always looking for more) to those who advertise with us, and to all that help to put all the various pieces together and then distribute the Informer.

Clive Patterson



Woodpecker Joinery

**SPECIALIST JOINERY
 MANUFACTURERS**

Established 1993

**DOORS • WINDOWS • STAIRCASES • SPECIALIST MOULDINGS
 BUILT-IN FURNITURE • ARCHITECTURAL JOINERY**

Built to your exact specification or by using our Design
 and Build Service
 - Fitting Service Also Available -

WE ALSO PROVIDE A GENERAL CARPENTRY MAINTENANCE AND REPAIR FACILITY
 A TOTALLY PROFESSIONAL SERVICE WITH EXCELLENT QUALITY GUARANTEED

FOR A FREE QUOTATION AND ADVICE

MOBILE: 07870 695466

EMAIL: woodpeckerjoinery@msn.com

43 Hall Barn Road, Isleham, Ely, Cambs, CB7 5QZ

Isleham Society Quiz

A short quiz to get the grey cells working.

- In 1959 two Isleham brothers discovered something special. What was it?
- Where can you press free juice on Apple day?
- What is a Griffin? Can you locate 3 of them in the village?
- Isleham hosts which national sporting competition in March?
- What fairy tale delights the Beeches end March?
- Visitors come from around the world to look up at the roof of St Andrew's. Why?
- Where are you likely to meet Lucy Frazer?
- In the old days, village householders bought lime from the Lime Kiln. Why?
- To go from Isleham Marina to Ely by boat you travel on which two rivers?
- Where was the village horse-drawn fire engine kept?
- What is the name of the oldest building in Isleham, - and who maintains it?
- When, where and why does the Isleham Society meet?

Answers on page 8



Karen's Grooming

All your pet's
 grooming requirements
 on your doorstep

01638 781791

07803 548573



KARMA FARM www.islehamfen.co.uk

8 Fen Bank, Isleham; Tel: 07900 961217



The Beautiful Eco-Campsite on Isleham Fen

Village clubs: information

CLUB	CONTACT		DAY/DATE	TIME	PLACE
1st Isleham Beavers (boys & girls 6-8yrs)	Emma Bucknall	07807 349754 islehamscouts.org.uk	Tuesday	5.15 - 6.15pm	The Beeches
1st Isleham Cubs (boys & girls 8-10yrs)	“	07807 349754 islehamscouts.org.uk	Tuesday	6.30 - 8.00pm	The Beeches
1st Isleham Scouts (boys & girls 8-10yrs)	“	07807 349754 islehamscouts.org.uk	Tuesday	6.30 - 8.00pm	The Beeches
Beeches Entertainers	Barbara Murfitt	07510 173412 / 01638 780373			
Board Games	Alison Young	01638 780351	Last Thursday	2.00 - 5.00pm	High St Church
Book Club	Doreen Spiers	01638 780783	2nd Friday	2.00pm	The Beeches
Bowls Club	Sylvia Pinder	01638 720875			The Bowls Club
Busy Bees	Pre-School	01638 781212	Wednesday	9.30 - 11.30pm	The Beeches
Craft Club	Hazel Thompson	01638 780633	Tuesday	1.30 - 4.00pm	Limestone Centre
Friends of Isleham Nature reserve	Avi Stacey	01638 780023	2nd Thursday Bi-Monthly	7.30pm	Various Please ring
Gala Committee	Lisa Alderson	07947 642333	3rd Monday	7.30pm	The Beeches
Isleham Society	Clive Patterson	01638 780669	3rd Thursday	7.15 for 7.30	The Beeches
Isleham United Youth FC	Steve Isaacson	07545 395573			
Isleham United FC	Jon Marks	07920 843914 jonmarks1965@yahoo.co.uk			
Isleham Tennis Club	Clint	07946 441351			
Isleham Cricket Club	Adrian Sheldrick James Tilbrook	07775 522765 (Chairman) 07884 582730 (1st Team Cap)			
Playgroup (IUFA)	Jennie O’Sullivan	01638 781212			
Pilates (Booking Essential)	Jo Simcock-Simms	07974 653775	Monday	10.00 - 11.00am 6.00 - 9.00pm	The Beeches
Pilates (Booking Essential)	“		Wednesday	12.00 - 1.00pm	The Beeches
Pilates (Booking Essential)	“		Friday	12.00 - 1.00pm	The Beeches
Tai Chi	Dave Coogan	01638 781705	Wednesday	1.15 - 2.15pm	The Beeches
The Beeches	Louise Quinn / Lisa Randall	01638 780097			
WI	Glenda Preece	01638 780734	2nd Thursday	7.30pm	The Beeches

• If you would like your club, society, organisation’s news and photos, or anything you (and the *Informer* team) think is of interest to the village to appear in the *Isleham Informer*, please contact any member of *Informer* staff - see page 3 for contact details. Please supply your article and photos by May 10th for our June issue. We also need the photographer’s name where necessary and details of photos for captions: please do ask subjects to give their permission to appear in the *Informer* - children should have parents’ permission.

FARR

PAINTING AND DECORATING

Andrew Farr

14 East Fen Road,

Isleham CB7 5SW

Tel: 01638 780375

Mob: 07768 328387

Interior and exterior

Painting and decorating

Paper hanging

Commercial and

domestic

Over 30 years'

experience



Plumbing, Heating & Drain Services



BLOCKED DRAINS CLEARED

- Gas Boiler Service & Maintenance
- Power Flushing to Heating Systems
- Home Buyers' CCTV Drain and Plumbing Surveys
- All Plumbing & Heating Repairs and Alterations
- All Work Guaranteed

TEL: 01638 742873

MOBILE: 07932 773515

7 Ness Road, Burwell

Cambridge, CB25 0AA

Pooley & Bendall Watson SOLICITORS

For a friendly and professional approach

- Domestic & Commercial Property
- Family & Matrimonial Matters
- Wills, Probate, Trusts & Tax
- Company & Employment Law

2 Three Cups Walk, Fore Hill, Ely Cambs CB7 4AN

Tel: (01353) 666075 Fax: (01353) 666162

Email: info@pbw.uk.com

Also at: 4b Church Street, Isleham, Cambs CB7 5RX

Tel: (01638) 780170 Fax: (01638) 780190

P B W Solicitors Ely Ltd is a Limited Company, trading as Pooley Bendall & Watson Solicitors. Registered in England and Wales number 9340474. Registered office: 2 Three Cups Walk, Fore Hill, Ely Cambs. CB7 4AN

HIS 'N' HERS SCHOOL OF MOTORING

Established 1992

David Eavis A.D.I. Grade A

Sarah Eavis A.D.I. Grade A

- * Highest grade instructors.
- * Over 25 years' experience.
- * Patient, reliable and DVSA qualified.
- * Student and block booking discounts.
- * Competitive prices.

www.hisnhers.org

Tel: : 01638 781214

email: hisnherssom@btinternet.com

Rothwell's
Carpet Cleaning

01223 832 928

www.Rothwells.biz

Carpet Cleaning

& Stone Floors, Upholstery, Rugs

A few points that make us stand out from the others,

Rothwell's has been in business since 1993.

We're an honest local family firm.

Our large truck mounted machines mean more cleaning & drying power for the best results possible.

Members of both the NCCA and TACCA.

We will move the furniture for a thorough clean.

100% satisfaction or it's FREE.

Call Oliver and Max Campbell for expert help today.

Isleham WI

We held our AGM in February when Pauline Wilkes was elected President for the next twelve months. We followed the business with a Beetle Drive, which was won, amongst a great deal of laughter, by Fiona Jones

In March we welcomed Marie Brown and Marion Thompson of Inheritance Legal Services, Ely, whose talk was entitled "Who gets Granny's Spoons". This was an interesting and informative talk all about planning for the future..

Our meeting in April is at the Bowls Club where members can try their hand at carpet bowls. The in May we will learn about the art of origami.

Our programme for the rest of the year:

June 13th	Summer Outing
July 11th	Flowers in a teacup Shirley Mingay
August 8th	Steel Bones - an Isleham Charity
Sept 12th	'Waitrose 'Cheese & Wine'
Oct 10th	Games & Supper
Nov 14th	Wreath making
Dec 12th	Christmas Meal

We meet at 7.30pm on the 2nd Thursday of each month at The Beeches. If you are interested do come along, you will be very welcome

For further information contact Glenda Preece

Tel: 01638 780734

email: gjprece@aol.com

Isleham Beavers

We started off our term with a fantastic Spy Camp over at Fordham scout hut where the children enjoyed playing spies, learning about finger prints and having some practice at fire lighting skills as well as being able to relax together.



A snap from our Spy Camp

This term the beavers have been busy working on some fundraising for Jay, who is one of our beavers. We have had a dress up evening where the children came in some fantastic costumes and started off our efforts.

Our young leaders are also planning a sponsored walk which will be on 16th March. Having hit a target of £150 Tom, one of our young leaders, will be dying his hair a colour of Jay's choice. This means you may see Tom walking around with blue hair! As well as these efforts we have seen a further 4 children gain their highest awards as beavers. That brings our total to 14 in the last 12 months, fantastic job children.

We have been learning about scouting in other countries, greetings in around 8 different languages and we even tried some Australian snacks, they were rather yummy!

At the end of March we will be taking 22 beavers, cubs and scouts for a sleepover at Legoland Windsor; this is a very exciting adventure for all coming along and our very first sleepover so far from home. As a colony we are sitting at 30 children with 30 more in our cub pack and 18 in our scout troop. With so many children we are always looking for adult helpers, we appreciate that not everyone wants to volunteer with children but there are many roles within our group that do not mean working directly with the children.

We are currently looking for a group secretary, this would involve just 5 evenings a year to attend executive committee meetings and our AGM. It is a vital role within our group and comes with the perks of invites to some of the things the children plan such as Christmas shows, summer parties and water fights. If you feel that you could give us a few nights a year to take down minutes or even record them to type up later please do drop us a message on gsl@islehamscouts.org.uk We are a friendly group and love to expand our circle.

We have had some fantastic feed back from some of our newest beavers, one after his first night declared "it was the best night of my life". We couldn't ask for better feedback from our young people. Emma Bucknall GSL/Beaver Leader 1st Isleham gsl@islehamscouts.org.uk



For all your building requirements

All home renovation projects including extensions, loft and garage conversions, alterations, garden walls, driveways and patios.

Call Alex for a free no obligation estimate on your building project....

01638 781679/ 07909915612

www.kingbuild.co.uk info@king-build.co.uk

Letters to the Editor

No letters for this edition but please send in articles, letters, thank you's and bits to promote discussions.

Isleham Society Quiz Answers

- A)** William and Arthur Houghton discovered a 3000year old hoard of Bronze Age treasure. Now in Moyse's Hall Museum Bury St Edmund's.
B) At the Community Orchard (did you know it existed?) Off Station Rd. It is cared for by a volunteer group, the Friends of Isleham Nature Reserves.
C) A mythical beast part eagle part lion. On the pub sign, but also in two Peyton Memorials in St Andrew's knights rest their feet on griffins-hence the pub name.
D) The opening competition of the British Eventing horse trials.
E) Hansel and Gretel. It's based on a German folk story by the Brothers Grimm.
F) To see the ten wonderful mediaeval wooden angels high in the Nave.
G) In the House of Commons. She is Conservative MP for S.E. Cambs.
H) Hygiene reasons. It was put on waste from earth privy toilets.
I) The Rivers Lark and Great Ouse.
J) At the Old Fire Station (red doors still exist) corner of Church St and Sun St.
K) The Priory. (Priory Church of St Margaret of Antioch). English Heritage.
L) Normally the third Thursday of the month at the Beeches to learn more about interesting aspects of past and present life in the Isleham area. Do come along!



The Beeches have purchased

160 **NEW** Hall Chairs

With thanks to fundraising from....

ISLEHAM CO-OPERATIVE STORE

THE BEECHES ENTERTAINERS

FUNDS RAISED BY BOTH ABBA TRIBUTE NIGHTS

A massive **THANK YOU**

To all who have enabled us to update the second hand, tired chairs.

We are in the current CO-OP round which we will use to complete the set.

Isleham Society

In February we held our Annual General Meeting, when Clive Patterson was elected as Chairman, and members of the Committee agreed to stand for a further year. They were joined by Mark Fletcher who will be our 'Project Manager' who promises to develop several ideas which will be of interest to many in the village. The first of these is a quiz to be published in each edition of the Informer. This month you will find it on page 4.

After the business part of the meeting members enjoyed a buffet, followed by a humorous quiz developed by An Cant, and won by the Rev Cleugh.

In March we were joined by Bernadette Merry, a Community Banker from NatWest, who gave a thought provoking talk about the increasing number of scams around at the moment, and how to avoid them.

At our next meeting on 18th April we will welcome Stewart Evans, an Isleham resident, who will describe the events 70 years ago when an American bomber crashed on the outskirts of our village. The following is taken from a report in the Newmarket Journal on Thursday 22 October 2009.

Sixty years ago this month, when the flaming fuselage of the world's heaviest bomber streaked across a foggy October sky, residents of Isleham had no idea just how close they had come to destruction or how much they owed to the "noble actions" of its American pilot. Every member of the 12-man crew of the B-50 Strato bomber which was out on a practice bombing mission and crashed in Beck Road, was killed, but the consequences could have been considerably worse for hundreds of others as the 16 500lb bombs it was carrying had been designed for mass destruction.

Our future programme:

April 18th	Stewart Evans "WW2 aeroplane Crash"
May 16th	The Grange Musical Collection
June 20th	Summer Visit tba
July 18th	Stuart Haggert "Testing in Education"
Aug	No meeting
Sept 19th	Major Lucy Lewis "My work in the Bomb Squad"
Oct 17th	Tour of Ely Cathedral
Nov 21st	Steel Bones, a local charity
Dec	No Meeting

We meet on the 3rd Thursday of the month at 7.30pm at The Beeches. Visitors are always welcome.

Clive Patterson Chairman

ISLEHAM NEWSPAPERS

Do You Want Your Papers Delivered?

Then Call

01638 781022

or call at 3 Sun St

and speak to Les Wightman

We do ALL titles and ALL Magazines!

Payments can be by cash, cheque, vouchers, etc.

Isleham Tennis Club

Now accepting members for the 2019/20 year.

The tennis year starts from May 2019. The nets will be permanently up from May through to August. Members can play at any time except where there are other football lettings (info can be provided once a member).

Prices Adults: £30 per year Households (Any size family living in same house): £50 per year Junior: £18 per year

Contact:
Clint Grove islehamtennisclub@gmail.com or 07946441351



What would you do to improve health services in Cambridgeshire?

The NHS is developing a local plan and needs your help. How would you make it easier for people to look after their own health and wellbeing?

Fill in this survey from Healthwatch and have your say on local services. In particular, Healthwatch wants to hear your ideas about

- Making it easier for people to access support closer to home and via technology.
- Doing more to help people stay well.
- Providing better support for people with cancer, mental health conditions, heart and lung diseases, and other long-term conditions.
- Providing better support for people as they get older and experience conditions such as dementia.

Share your ideas

Your local NHS needs to hear from you about what it should do to make care better for your community. Feedback online at <https://www.healthwatch.co.uk/what-would-you-do>

Call your local Healthwatch on 0330 355 1285, text 0752 0635 176
Or visit www.healthwatchcambridgeshire.co.uk
This survey is open until the end of April

Isleham Informer is a unique advertising opportunity for any business wishing to connect with over 2000 villagers

please email Emma for more details:

Emmajoystaines@yahoo.co.uk
Advert sizes and cost as follows:

1 page, £82.50 (colour £165)

1/2 page, £42.50 (colour £85)

1/4 page, £22.50 (colour £45)

1/8 page, £12.50 (colour £25)

1/12 page (Karma Farm) £7.50

10% booking discount on annual subscription
All prices exclude VAT





AVOCET ELECTRICAL TECHNOLOGY



NICEIC PART P APPROVED ELECTRICAL CONTRACTORS

Avocet Electrical Technology are electrical contractors working throughout Cambridgeshire, Suffolk and across East Anglia.

We cover electrical projects for the commercial, industrial and agricultural sectors and are NICEIC Part P Registered for domestic projects.

Our expertise includes:

- Bespoke LED lighting design, supply and installation
- Installation of single and three phase systems
- Maintenance and repair of agricultural, commercial, industrial and domestic installations
- Low energy lighting consultation
- Inspection and testing
- Fire alarm design and installations
- Home automation

Please do not hesitate to contact us with any query.

T: 01638 780033 M: 07800 832619
E: info@avocet-electrical.co.uk W: avocet-electrical.co.uk
Avocet Electrical Technology 43 The Causeway Isleham Cambridgeshire CB7 5TA



What's on at The Beeches



MONDAYS	10.00am - 11.00am	PILATES
	6.00pm - 7.00pm	PILATES
	7.00pm - 8.00pm	PILATES
	8.00pm - 9.00pm	PILATES
TUESDAY	5.15pm - 6.15pm	BEAVERS
	6.30pm - 8.00pm	CUBS
	6.30pm - 8.00pm	SCOUTS
WEDNESDAYS	9.30am - 11.30am	BUSY BEE'S PLAY SESSION
	12noon - 1.00pm	PILATES
	1.15pm - 2.15pm	TAI CHI
THURSDAYS	5.45pm-7.15pm 7-8pm	CHILDREN'S TEXTILE CLASSES ADULTS BALLET CLASS
	4-5pm 7.30pm - 10pm	CHILDREN'S BALLET CLASS WI MEETINGS: 2nd THURSDAY OF THE MONTH
	7.15pm for 7.30pm Start	ISLEHAM SOCIETY: 3rd THURSDAY OF THE MONTH
FRIDAYS	12noon - 1.00pm 2.00pm - 3.30pm	PILATES BOOK CLUB: 2nd FRIDAY OF THE MONTH
	9.30am - 12.30pm	BREAKFAST ROLLS (Football season only Sept - April)
SATURDAYS / SUNDAYS	TIMES MAY VARY	MOSTLY EVENT DRIVEN AT WEEKENDS

County Councillor

As the day stretches out and the clocks soon to change, and especially after unusually warm weather in late February, Spring is nearly in full flow. It is traditionally a time for change, cleaning, and energy. Not a lot different as far as Council matters are concerned really. There are the District Council elections on May 3rd for which Isleham is now in a new ward with Fordham and other villages and carries two councillor slots.



At County Council Spring is met with a mixture of cleaning and change, both of which need buckets of energy. Cleaning in terms of addressing the Highways of awaited needs. Shortly after April should see the Grips re-cut in and around Isleham, which will allow the water to leave the highway and enter the soil, reducing the puddles and therefore future pot holes on our roads. I would say, if you want to measure the roads in Cambridgeshire try driving towards Worlington or West Road, over Cross bridge and see the difference in road quality between West Suffolk and Cambridgeshire!

Change is the many activities that are underway in or around Isleham, some of which I have listed below.

1. The successful opening of the bridge on the A142 at Ely is now followed by the opening of the revamped underpass, now fully open.

2. We are soon to open a Man Shed operation in Soham to which anyone with time, energy skill and enthusiasm is welcome to attend. Contact me for more information.

3. A new day centre has opened, also in Soham, on Monday's each week to which anyone is welcome.

4. I have begun discussions about possible bus services for Isleham, if only to Soham to the new station, due to complete in 2021. At least one could then travel far and wide from Isleham itself without the use of a car.

5. Part of the A14 is to be reclassified as Motorway, meaning better and safer travel for users of the new sections.

6. There is work ongoing looking at longer term planning for travel and transport for the area, including the Combined Authority's planned Metro. This will bring a multi-person transit system from Mildenhall to Cambridge, passing through or adjacent to Isleham, allowing further public transport opportunities.

So with lighter and longer days, it must be close to Cricket season and nothing looks better in Isleham than the team in whites on the recreation ground on the wicket lovingly and tirelessly prepared by Ray Sheldrick. I know they are looking for new players, and have a successful and growing youth set up so if you know anyone that may enjoy this contact Adrian Sheldrick.

So Spring is the period for change. Isleham is faced with many pushes for change, including development applications, increased road traffic, and many more, but at the heart is the village neighbourhood environment that I have lived in now for approaching 25 years. There may be slightly more aesthetically pleasing locations, and there may be easier to reach locations but I am yet to find anywhere that comes close to matching the community spirit in Isleham.

Whatever growth, change or new challenges befall the village, Isleham will always maintain an identity and core as long as this is preserved. So support the Gala committee, visit The Beeches, shop at the Co-op, and use the three pubs. Join the numerous clubs and societies that exist, and seek out your spiritual fix at the Churches we have. Couple all these together and we have a wonderful place, the very envy of many in East Cambs, and further afield.

Finally, If I can assist on any matter that is the responsibility of County Council, please feel free to contact me. For example a resident called me last week about the state of the drove on Waterside. I spoke with Highways and despite not being an adopted road they agreed, then delivered, some plainings for residents to use to address the failing areas. If I can assist I will, so please don't hesitate to ask.

Happy Spring all. Cllr Mark Goldsack

The 8th Annual Spurgeon Trundle

Saturday the 4th of May 3.00pm

Why should anyone want to spend time on a Saturday afternoon just to see a stone monument on the bank of the River Lark? Oddly enough, lots of us do! For the last seven years, 30 to 40 of us have met at the pond in East Fen Road, Isleham, to enjoy a pleasant Trundle together. The Trundle is a leisurely walk, along East Fen Road, turning left into Ferry Drove, about a mile and a half altogether.

The monument on the bank of the River Lark was placed there some years ago to mark the site where a most important Baptism took place, by total immersion in the river, on the 3rd of May 1850. That particular Baptism was indeed the formal start in the Christian life of a man who became one of the most famous and powerful preachers amongst clergymen of the Victorian era, and to think that all this began here in Isleham! He had walked from Newmarket to Isleham, basing himself at Pound Lane Church, before continuing his journey on the same route that we will take, to the River Lark, where he and three others were baptised that day. His name? The Reverend Charles Haddon Spurgeon.

So famous did he become that, in the course of his life, he preached to millions of people throughout Britain, which feat was in itself on a par with people as famous as John Wesley years before him. His influence upon Christianity was so great that a College was even established in London to train Baptist Ministers, and it's possible that representatives from Spurgeon's College may join us this year on our Trundle.

By kind permission of Gary Aves, we will be permitted to visit the site of Spurgeon's baptism, where a very short act of worship will take place, to mark the 8th annual Trundle, for what is regarded by many as Isleham's best-kept secret.

Come on your bikes if you like, and there is just about room for three cars to ferry anyone disabled to the site who wants to join us. So - meet us at the pond on the corner of East Fen Road on Saturday the 4th of May at 3.00pm, and help Isleham keep alive this unusual tradition of the Spurgeon Trundle, which we hope will continue well into the future, as something very special about Isleham!

Christopher Goodwins

Isleham Nature Reserve News

Spring is now under way and all our Parish nature sites are coming to life with plum, cherry and goat willow all in blossom. These provide an important nectar source for all the early emerging bees as do early wildflowers such as lesser celandine (*Ficaria verna*), a member of the buttercup family. Look out for these on the railway nature reserve and in the community orchard.

The Friends Group are working with the farmer who manages the field next to the railway nature reserve to maintain its importance for a number of chalk grassland wildflower species, including; pyramidal orchid and field scabious. To maintain the chalk grassland in an ideal condition for these important wildflowers it has to be grazed with livestock, ideally with sheep due to their method of grazing. This field is not part of the nature reserve and access to this field is available through the kind permission of the farmer. Please remember that when the sheep are on the field to keep your dog(s) under close control or on a lead.



Events Programme for 2019

Annual Site Management Walk

Thursday 18th April

Starts at 6pm meet at car park

Apple Day

Sunday 22nd September

2pm – 5pm

Moth Recording

- setting up moth traps -

Saturday 27th July

9.30pm – 1am

Moth Identification

Sunday 28th

9am

Please keep an eye on our Facebook page for more events.

Finally a big THANK YOU for helping us to get on top of the dog fouling at the Reserve! The posters, spray and free poo bags have helped. There are now many fewer deposits to be concerned about, due to the enhanced consideration and awareness of the dog walkers. Please remember to use the dog bins as we are still finding poo bags hanging from trees!

If you would like to volunteer to help with any of the work of the Friends Group then please get in touch:

Avi Stacey (Chair) 01638 780023

Anne Noble (Secretary) 01638 780023

You can also find us on Facebook at Friends of Isleham Nature Reserves

Stelen's Curtains & Blinds



Do your windows
need a makeover?

Look no further than
Stelen's
Curtains & Blinds

We are proud of our excellent
customer service and the quality
of our gorgeous, locally made products.

Call or email today for a chat about your requirements
and to arrange a free no obligation quote in the
comfort of your own home

Helen Neale 07903 368778
helen@steveandhelen.co.uk

Find us on Facebook

Beautiful fabrics, a great selection of poles & tracks
and a full fitting service

CARPENTRY SERVICES

Est 1970

For all General Carpentry and
Building Work

**

No Job Too Small

**

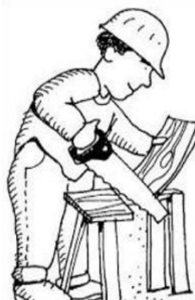
Grant Hounsom

29 Robins Close, Isleham

Tel : 01638 780358

Mobile: 07801950627

carpservisleham@yahoo.com



Kitchens - Bathrooms
Doors - Windows
Interior - Exterior
Maintenance
Lodge Gables over
boarded
And More ...

CHURCHES

St Andrew's Parish Church

All are welcome in this community of faith in Jesus Christ. St Andrew's is part of the Three Rivers Group of parishes, also including the parishes of Chippenham, Fordham, Kennett and Snailwell. In a wider sense we are part of the Church of England, Diocese of Ely and the Worldwide Anglican Communion. Do join us for worship and fellowship.

Rector: David Cleugh
The Vicarage, 24 Mildenhall Road, Fordham, CB87 5NR
01638 723010 davidrcleugh@gmail.com
Associate Priest: Sue Potts.
The Vicarage, Chippenham, CB7 5PP
01638 721662 revd.sue@icloud.com
Churchwardens: Rob Savage
01638 780218 robert.savage@islehamchurch.org.uk,
Kathy Carver
kathy@carverfamily.org.uk
Licensed Lay Minister: Carol Taylor
Authorised Lay Minister and Choir Director:
Mark Liversidge
01638 781696 mark.liversidge@islehamchurch.org.uk
Parish Intern: Mel Takac
mel.takac@gmail.com
Tower Captain: Ruth Ogden
01638 780646 ruth.ogden@islehamchurch.org.uk
Webmaster: Andrew Stephens
01638 781468/780229
www.islehamchurch.org.uk

Worship

Our main Sunday service is at 9.30 am with Junior Church meeting in the social centre. On the Third Sunday of the month we worship together at an All Age Communion Service. During the week there are the following opportunities for prayer, all welcome.

Monday: 9am Morning Prayer at 7, The Close, Kennett
Tuesday 8.15am Morning Prayer Social Centre Isleham
Wednesday 8.15am Morning Prayer St Margaret's Church, Chippenham
7pm Compline St Peter's Church Snailwell
Thursday 8.30am Holy Communion (BCP) St Peter and St Mary Magdalene Church, Fordham
Friday 8.15am Morning Prayer St Peter and St Mary Magdalene Church, Fordham
6.30pm Choir Practice: St Andrew's Church (beginners welcome)
7.30pm Bell Practice: St Andrew's Church (beginners welcome)
Social: Coffee Morning every Tuesday 9am-12noon Social Centre: Tea, Coffee, Bacon sandwiches, village gossip, post office, fun - what more could you want?

Holy Week

Palm Sunday 9.30am Eucharist
Palm Sunday 6.00pm Stainer's Crucifixion sung by combined choirs at Fordham
Monday 7.30pm Compline at Isleham
Tuesday 7.30pm Compline at Fordham
Wednesday 7.30pm Compline at Snailwell
Thursday 7.30pm Maundy Thursday Eucharist at Chippenham
Friday 10.00am Joint Isleham Churches Good Friday Service at High Street
Friday 2.00pm Liturgy of Good Friday at Fordham
Easter Sunday 5.15 Dawn service at Chippenham
Easter Sunday 9.30 Easter Eucharist

Pound Lane Free Church

Pastor: Mr. Dave Hall
(01638 781343 or 01638 780636, email pastor@plfc.org.uk)
Elder: Mr. Matthew Hall

Every Sunday:
Sunday worship: 11.00a.m. & 6.30p.m.
Celebration of the Lord's Supper
1st Sunday following evening service
3rd Sunday following morning service

A Crèche is available for babies to 7 years during the morning service.

Refreshments are served after the evening services, except the first Sunday of the month.

Fellowship Lunches are served after the morning service on the third Sunday of the month.

Kingdom Kids	(3yrs. – Yr3):	10.00a.m. - 11.15a.m.
All Stars	(Yr.4 – Yr.6):	10.00a.m. - 11.00a.m.
Covies	(Yr.7 – 18yrs.):	10.00a.m. – 11.00a.m.

There is a hearing loop installed and signing for the deaf is available as well as Braille songbooks. We have a comprehensive Child Protection Policy and a CRB check has been carried out on all children's and young people's workers.

Monday:
Music Mayhem: 9.30-10.30a.m.
(Preschool children during school term only)
A fun time for your pre-school children – action songs, musical instruments and the ever popular "Sockeroo". Followed by refreshments and a time to relax with friends whilst the children play. New members always welcome.

Wednesday:
Church Night: 7.40p.m. - 9.00p.m.
Bible study, prayer and fellowship. Age from mid-teens upwards.

Thursday:

Coffee Morning: 10.00a.m. – 11.30a.m.

Turn up any time between 10 and 11.30 for free tea, coffee and cakes. Chat with friends and make new ones. Open to any age. Includes an 8 minute "in the news this week" slot in the middle.

Friday :

Women's Meeting(Fortnightly): 10.30-1.45am

Fellowship Meeting (monthly): 12.00 – 2.00pm

For older folks – starts with a meal.

Saturday :

Men's Fellowship (2nd Sat. of month): 8.00am

Christianity Explored courses are run regularly - please ask for dates of next course. (Cont'd on page 14)

For further information on any of the above or if you would like to speak to Pastor Dave:

Phone: 01638 781343 (Church Office)

01638 780636 (Pastor's home)

Email: pastor@plfc.org.uk or secretary@plfc.org.uk

Web site: www.plfc.org.uk & www.isleham.com

Full details of all our services, events, core beliefs and contact details are on our website: <http://plfc.org.uk>

Thank you so much to everyone who helped in any way with the Operation Christmas Child 2018 Campaign. We are delighted that you enabled us to send 1907 shoe boxes in 190 cartons from the CB6, 7 and 8 postcode areas. A total of 15,076 boxes in 1612 cartons were exported to Liberia and the Middle East from West Anglia Region (of which we are a part). Our boxes were kept "as a whole" for the second export to the Middle East. You can be sure they will have brought joy to the hearts of very needy and traumatised children, showing them there is a God who loves them.

This Spring Pound Lane Free Church presents

******EASTER EXTAVAGANZA 2019******

"Absolutely brilliant, unmissable family fun"

Saturday 20th April 1 – 3pm

Starring Bouncy Castle, Cookery, Crafts,
Egg Hunt and Easter Explained.

Follow Pound Lane on Facebook for further information



Isleham Cattery

Cat Care by Cat Lovers

Built and managed to Feline Advisory Bureau standards

All family size chalets

Inspections always welcome

Opening hours

Mon-Sat: 10:00-12:00 and 2:00-6:00

Sun and Bank Hols: 11:00-3:00

57 Waterside, Isleham, Cambs CB7 5SH

www.isleham-cattery.co.uk

01638 781367 — lorraine@isleham-cattery.co.uk

High Street Church

High Street is a Non denominational Church, formerly a Baptist Church, and is situated at the junction of Church Street, Sun Street and The Causeway. We meet on Sundays at 10.30am and 6.30pm and throughout the week too. Please ring our Church Office on 01638780985 or contact us via our website www.highst.org.uk for more information.

We call ourselves a Church Family of all ages and we really are. In February Mabel Cowgill celebrated her 99th birthday! Since Christmas, babies Jo-Jo and Caleb have joined us, and there are more to come! People come from this village as well as from other villages in the area. Some people have been a part of the Church for years and others just turned up last week. Some are invited by friends and neighbours and other's come alone but soon feel that they belong. We would love you to join us and would be more than happy to save you a seat and meet you at the door if that's easier for you, just let us know you're coming.

Being amongst people who love Jesus is a great experience....Knowing Jesus is life changing! Easter is late this year but it's a Celebration we are really looking forward to. You are more than welcome to come on Good Friday morning at 10.30am as we remember the sacrifice that Jesus made for us, to show us His love and forgiveness. Then on Easter Sunday, join us at 10.30 for a service of real celebration as we rejoice in the knowledge that Jesus is alive and promises, to all those who believe, NEW LIFE in Him.

Kathryn Kyte

Isleham
Mobile Library

THE
LIBRARY
PRESENTS



Lady Chillers

Dramatic Readings of Victorian Ghost Stories
Performed by Christine Pike

Friday 5 April 7.30pm

£4 per person, Suitable for Adults & Young People

Book and pay at the Mobile Library or call 01223 706342.
Tickets are limited so advance booking is advised.

www.cambridgeshire.gov.uk/arts

[f](https://www.facebook.com/TheLibraryPresents) [ig](https://www.instagram.com/TheLibraryPresents) @TheLibraryPresents

Babylon
ARTS

Cambridgeshire
County Council

ARTS COUNCIL
ENGLAND

The van will be parked on Church Street near the Priory

Isleham Primary School

British Science Week at Isleham Primary School

During British Science Week, from the 8th – 17th March 2019, children from Isleham Primary School had a range of science tasks to investigate, when they removed themselves from the usual timetable constraints to two full days of science exploration. Each class conducted a variety of investigations such as: exploring air resistance with a range of air crafts; planting potatoes; making skeletons; taking about memory and making brain hats and making a visit to Suzie's wood area.



Thanks to the volunteers of Wicken Fen, the whole school had the opportunity to visit Suzie's wood. As a school, we are very lucky to have the opportunity to access this private woodland area for this science activity as well as some classes making visits each week. A massive thank you to Suzie for this wonderful resource!

The younger children used the woodland area to find a range of biodiversity. They looked under logs and rocks to reveal mini beasts, and they searched high and low for evidence of living things. Once a full range of interesting discoveries had occurred they made a mini beast home and a mini beast model using clay.

These were then displayed in a bug museum to show the wildlife that would be lost if the woodland was destroyed.



When the older year groups arrived at the wood area they found sections of the woods fenced off with tape. Some builders then arrived and told them that unless they found evidence of living things in the area, then they would start building houses! They couldn't see much evidence of animals and plants, except for trees! With an air of enthusiasm and determination, the children went off to search for evidence to convince the builder that the wood must stay! This was

a great activity organised by Wicken Fen where the children were totally engaged in the task and worked brilliantly in small groups.



They discovered so many different plants and animals that the builders said they would not build on the site after all. A great result, as well as fun sessions and fantastic learning about the environment, biodiversity, food chains and a woodland ecology!

YEAR 5

The Isleham Society

18th April 2019

7.15 for 7.30pm start

“WW2 Bomber Crash” Isleham

An illustrated talk by:
Stewart Evans



**JOIN US AT THE
‘THE BEECHES’ ALL WELCOME**

Followed by Refreshments and a draw
Cost for Non Members - £2

Isleham Bowls Club

Springtime is always about concluding the indoor carpet bowls season and preparation for the new outdoor season.

Every Wednesday evening, we host a bingo night which anyone is welcome to come along to play. You don't have to be a member of the club, it may be better than staying at home and watching TV! – anyone interested should contact Doreen (number below).

Team B are showing the way in the East Cambs division 2 carpet bowls league, currently top with 3 matches left to play and also a upcoming semi-final tie in the knock out cup against a strong team from Littleport Village Hall. Team A have an outside chance of also being promoted.

As time now turns to spring and the onset of the new outdoor bowling season, perhaps YOU could get interested in taking up a new hobby. We always welcome new players so you never know, it may be better than you expected. The season starts on Easter Monday 22nd April, meeting from 2.00pm and anyone is most welcome to come along and join us to see the set up and facilities. If you are unavailable to make that day, then feel free to contact a club member who can advise you when there may be someone up the club to meet you. Any play on the bowls green is subject to the weather conditions on the day. You do not initially need to bring anything other than a flat pair of shoes as the club has a limited amount of bowls (+ some shoes if needed) that may be used.

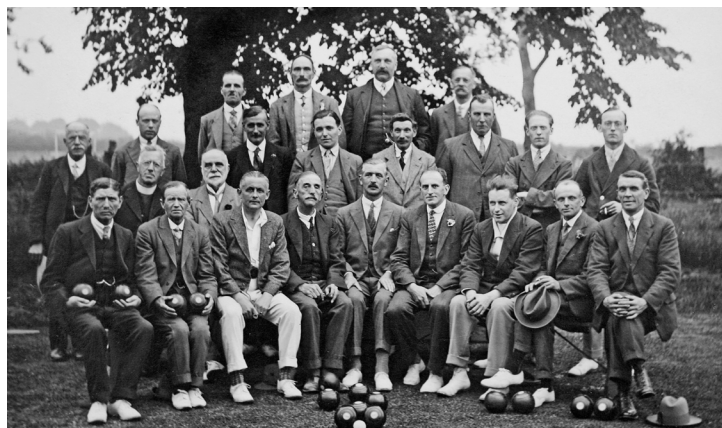
During the season we play at all levels of the game so there is something for everyone. We play in a ladies only league and men only league on a Tuesday/Thursday evening and in two mixed leagues (one in the afternoon, Monday or Fridays, the other on various evenings during the week). There are also competitions at all standards and also just the basic entry level bowls.

Membership is free for the first season so you are able to 'try before you buy'!

For further information you can contact either:

Secretary	Sylvia Pinder	01638	720875
Captain	Barry Grimwood	01638	781943
Chairman	Bob Cole	01638	662827
Committee	Rowley Wells	01638	780191
Doreen Raven		01638	780836

SO COME ALONG, we would be really pleased to see you!
Barry Grimwood Club Captain



SWAFFHAM BULBECK SUMMER THEATRE

proudly presents:

'THE GRAND DUKE'

by W.S. Gilbert and Sir Arthur Sullivan

Wednesday 12th – Saturday 15th June 2019

Evening performances at 7.30pm and a Saturday matinée at 2.30pm

Doors open 45' before each performance

Downing Farm, Station Road, Swaffham Bulbeck, Cambridge CB25 0NW

Ticket prices Wednesday and Thursday £9, Friday and Saturday £10, matinée £7,
via our website www.sbsummertheatre.com; e-mail sbstickets@gmail.com
or call 07708 577570

On-site parking; facilities for wheelchair users; licensed bar

For further information (not tickets) contact Ruth Dennis on 01638 730659 or
info@sbsummertheatre.com

***Swaffham Bulbeck Summer Theatre is
proud to present
'The Grand Duke'
by Gilbert & Sullivan in June 2019.***

As in previous years the productions will be staged in the wonderful 'Theatre in a Barn', Downing Farm, Swaffham Bulbeck, Cambridge CB25 0NW; dates as follows:

- Wednesday 12th June 2019 at 7.30pm - £9
- Thursday 13th June 2019 at 7.30pm - £9
- Friday 14th June 2019 at 7.30pm - £10
- Saturday 15th June 2019 at 2.30pm - £7 and 7.30pm - £10.

Tickets will be available after 1st April via our website, or by e-mailing or telephoning 07708 577570.

For further information about the show please contact Ruth Dennis on 01638 730659.

First performed in 1896, The Grand Duke was the last of The Savoy Operas. Despite its short run, it contains some of Sullivan's best music, but Gilbert's plot was capricious and wordy resulting in an overly long operetta which soon faded from public acclaim and is rarely performed.

However, we have cut unnecessary dialogue and a few of the repetitive songs to deliver a comic and fast moving show, true to its traditional origins but of normal length, that needs a bit of concentration to keep up with its twists and turns, too numerous to go into here! If you have not had the pleasure of seeing it before we recommend this opportunity, and we are sure you will enjoy it.

<<<< Isleham Bowls Club 1922

Isleham Society Calendar

The Isleham Society are hoping to produce a calendar for 2020.

We are looking to theme the calendar with views around the village and are now asking for pictures from you, the residents.

Pictures can be varied, groups, buildings, scenes, landscapes, machinery etc but must be within the village or the farmland surrounding the village. All submissions must be your own work. All pictures should be in electronic format and at the best resolution possible (Max 10Mb)

Entries will be allowed until about September 2019 when we will gather together all submissions and then decide on the final pictures.

Please forward all pictures to the informer editor patterson.clive@gmail.com

Rules can be found on the village website: www.isleham-village.co.uk/islehamsociety.html

Isleham Society, put names to faces from the past

As part of the ongoing cataloguing and remounting of the picture collection we are trying to put names to some or all of the faces. Whilst I can name a few it would be nice to get a definitive list. Please contact the editor with any names. Thanks



*Isleham Bowls Club
July 1981*



*Boys Brigade
Sponsored Go-carts
May 1982*

Burwell Museum

Opening Weekend and Easter Egg Hunt

Burwell museum re-opens at Easter weekend, Sunday 21st April and Bank Holiday Monday 22nd April 2019 for our annual Easter Egg Hunt. Loads of family fun including chocolate prizes for all egg hunters, crafts, tombola and Easter treats in the tea room! Standard museum admission applies, season ticket holders and under 3s are free. Egg hunt entry is £1.

The museum will then be open every Thursday, Sunday and Bank Holiday Monday from Easter to October, 11.00-5.00. Last entry at 4.00. Prices are the same as last year, £4 for adults, £2 for children, £10 for a family (up to 2 adults and 4 children).

Your Museum needs you!

We're always looking for friendly, community-minded people of all ages to join our volunteer team – we're particularly keen to meet people who are happy to join our Sunday front of house team and/or to show visitors around the windmill. If you're interested and have some free time on Tuesdays, Thursdays or Sundays, give us a ring on 01638 605544 or email volunteers@burwellmuseum.org.uk

Holiday activities

As usual, the Thursday of May Half term (Thursday 30 May) will be a hive of activity at the museum. This year our museum activities will be looking at the amazing materials which make up our museum collections, starting with bone. We're teaming up with the Museum of Zoology and the Museum of Archaeology and Anthropology in Cambridge to look at what bones can tell us about how Burwell has changed over the years.

1.30-4.30pm, standard museum admission applies.

Website: www.burwellmuseum.org.uk

Tel: 01638 605544

Email: museum@burwellmuseum.org.uk

Burwell Museum, Mill Close, Burwell.
CB25 0HL

Isleham Litter Pick

On Saturday 23 March 25 villagers met at the Social Centre before setting off to tidy up our village.

It was the start of the KEEP BRITAIN TIDY campaign, and Isleham residents certainly contributed to this.

Bags of litter were collected from all round the village, and two volunteers arrived with trailers, and proceeded to remove rubbish from the outskirts of the village.



Afterwards we all met back at the Social Centre for a very welcome cup of tea or coffee, kindly supplied by Mary Whiteman and Betty Ashley. Thanks to them both, and thanks also to everyone who gave up their Saturday morning to remove all that rubbish.

The piled up result at the Social Centre was pretty horrific - rough count 57 bulging and smelly black bags, 18 tyres and the heaps of flooring bits etc.

Calmer Counselling
Keep Calm & Talk To Someone

**Stressed? Depressed? Worried?
Need to talk to someone?**

Counselling Service based in Isleham, easily accessible from A14, Ely, Newmarket and surrounding areas.

Contact Heather Boylan for further details or to make an appointment.

Email calmer-counselling@outlook.com or www.calmer-counselling.co.uk

Phone **07410 381728**

Daytime or evening appointments available.

West Street, Isleham
CB7 5SD

P.J.Carrington
Gas Heating and Plumbing Services

<p>Servicing and Installation Domestic Natural Gas L.P.G. Boilers and Appliances Part 'L' Heating Efficiency Gas Fires Underfloor Heating</p>	<p>Bathrooms, Wet Rooms Kitchens Fully Certified Fully Insured Landlords Certification No Job Too Small!! Mobile Park Homes, Leisure Vehicles, Boats Unvented Domestic Hot Water Systems Oil fired boiler service and repair</p>
---	--

T: 01638 781790
M: 07533 172539
E: carringtonpj@live.com
W: www.pjcarringtonheatingandplumbing.co.uk

68 Isleham Marina
Fen Bank
Isleham
Cambs CB7 5SL

* Painting Passions Presents *

BOOZE & BRUSHES
April Classes

Wed 10th - Barrow Village Hall (BYO) - 7-9pm
Fri 12th - The Apex, Bury St Edmunds (Bar) - 7-9pm
Tue 16th - The Beeches, Isleham (Bar) - 7-9pm
Fri 26th - Wensum Community Center Norwich (Bar) - 7-9pm

£25 Each
Tickets sold at paintingpassions.co.uk



Isleham Parish Council Update



The Parish Council meets on the first Monday of every month at 7.15pm. Meetings are held in the main meeting room of The Beeches. Members of the public are invited to attend the meetings and 15 minutes are set aside each month for public question time. (No food or drink to be bought into the meeting room, please.)

Full copies of the agendas and minutes are available on the Parish Council website, the notice boards outside The Beeches and adjacent to the cenotaph and from the Parish Clerk, Jeanette Borderick: tel 01638 781687, email islehampc@gmail.com.

A new Parish Councillor, Mr Alan Dennis, has been appointed and we welcome him to the team.

Should you wish to apply to become a Councillor, application packs are available from the Council Office. The voting takes place on 2nd May 2019.

The village is once again looking to set up a Speedwatch team. If you are interested in becoming a volunteer please let me know. Further information is available on <https://do-it.org/organisations/east-cambridgeshire-community-speedwatch>

Allotment Matters

- There are still a number of plots available on both the Dunstall and Three Trees Allotment sites. The rent for a ten rod plot, which equates to 252m² is just £15 per annum! Please contact the parish clerk for details.

In February there were 4 planning applications. These can be viewed online at <https://www.east-cambs.gov.uk/planning/current-planning-applications>

18/01696/FUL Two storey front extension and first floor rear extension. Graceway House, 16 Station Road, Isleham-Mr S Crawford. There is an overbearing impact on neighbouring houses including loss of light. The extensions would result in the house being overdeveloped and change the building line of this terrace reducing the visual amenity. Object.

18/01482/OUT Residential development of nine single storey dwellings, garages, parking, access road and associated site works-phased development. Site north of 4 Fordham Road, Isleham-J Sargeant. Council requests that the footpath be extended from the edge of the site as shown to the junction of Hall Barn Road. No objection.

19/00098/FUL Single storey side extension.23B Little London, Isleham-Mr & Mrs P Clarke. No objection.

18/00127/FUL Land adj 22 Little London,

Isleham. New 4 bedroom dwelling. Appeal made to Secretary of State. All objections previously submitted and will be considered.

Jeanette Borderick
Interim Parish Clerk to the Council

Parish Councillors address list

Richard Radcliffe (Chairman)	45 Sun Street, Isleham Tel: 01638 780831
Derrick Beckett (Vice Chairman)	Appleyard Farm, 1 Houghtons Lane, Isleham Tel: 01638 780476
Vanessa Bruyneel-Smith	115 The Causeway, Isleham Tel: 01638 781708
Jeannette Malkin	17 Little London, Isleham Tel: 01638 780283
Bob Mitchell	10 Sparkes Close, Isleham Tel: 01638 780707
Marco Caferelli	22 Maltings lane CB7 5RZ,, Tel: 07971 335193
Clive Patterson	21 West Street, Isleham Tel: 01638 780669
Glenda Preece	94 The Causeway, Isleham Tel: 01638 780734
Brett Turton	5 Beck Road, Isleham Tel: 01638 7803338
Pauline Wilkes	6 Limestone Close, Isleham Tel: 01638 780640
Alan Dennis	2, Nursery Close, Isleham Tel: 01638781782
Jeanette Broderick (Temp Parish Clerk)	Parish Office, The Beeches Tel: 01638 781687 Email: islehampc@gmail.com Website: www.isleham-village.co.uk

WWW.CSPSERVICES.CO.UK

Computer/laptop repairs, upgrades & new builds,
virus & spyware removal plus data recovery.

Printer cartridges at good prices.

Telephone points, routers & networks installed & set up.
Computer spares held in stock.

Watch batteries fitted.

Transfer 35mm slides to computer. Photo's digitized

Contact us:

Tel: 01638 780669 Mob: 07771 830336

Email: enquiries@cspservices.co.uk or patterson.clive@gmail.com

Website: www.cspservices.co.uk

Andrew Myson
Painting & Decorating

24 Hall Barn Road, Isleham

Ely, Cambs, CB7 5QZ

T: 01638 780680 M: 07775673480

a_myson@yahoo.co.uk

World Book Day 2019 at Isleham Primary School

Children at Isleham had a very special visitor this year for World Book Day- the famous children's author Pippa Goodhart! She has written many books including the 'You Choose' books illustrated by Nick Sharratt, as well as the Winnie the Witch books (under the name Laura Owen).

The day was filled with fun from the moment the children arrived in the morning dressed in their fantastic costumes; they enjoyed trying to guess which book characters their classmates had dressed as, as well as their teachers! Book token prizes were awarded to the best costume for every class, although this was very hard to judge! There were some really imaginative costumes so thank you to all the children (and the parents) who spent time making them! Pippa ran a workshop in every class throughout the day, during which she read to the children, answered questions, showed the older children how her ideas are formed and the editing process. She also signed copies of her books and spent time talking to and inspiring our budding authors!

The children spent the day working on fun activities based around books and by the end of the day each class had completed a book display for their classroom door. They all look absolutely fantastic. Thank you to everyone involved who made World Book Day 2019 such a great success.

Gemma Sassoli, English Subject Leader



THE LOCK GUYS

YOUR TRUSTED
LOCAL LOCKSMITH SERVICES



24/7 callout



No callout charge
or hidden fees



20% seniors
discount



Commercial and
residential



Free security
check



- Lock-outs
- Non-destructive entry
- Lock repairs
- Lock replacements
- Lock upgrades
- Burglary repairs
- UPVC door and window repair
- Garage doors
- Key cutting on site
- Mul-T-Lock authorised dealers
- 12 month warranty on all parts and labour



LAWNMOWER SALES, SERVICING & REPAIRS

- ✓ PETROL LAWMOWERS
- ✓ RIDE ON LAWMOWERS
- ✓ SMALL ENGINED MACHINERY
- ✓ BLADE SHARPENING
- ✓ QUALIFIED ENGINEERS


fenlandspiritservices@gmail.com

LIKE US ON 

GIVE US A CALL




Ten Mile Bank, Littleport, CB6 1EE
07753 836499
WWW.FENLANDSPIRITSERVICES.CO.UK



Fully insured, Level 3 City and Guilds qualified dog walker and groomer.

Here at Tubs and Tails, we take special care of your pet, using high quality vegan shampoos that are made from natural ingredients, ideal for allergic and sensitive skin.

WASH AND GO	FULL GROOM	DOG WALKING	HANDSTRIPPING
Bath and Fluff Dry Ear Cleaning Nail Trimming 7 Point Health Check	All bath Services 3 Step De-Shedding Process Trim and Thin Around Feet and Feathering to Highlight Dog's Natural Shape	Half hour or full hour Solo walk or walk with another dog	For wire or silky coated dogs All bath services and full body handstrip

Prices start from:
Small dog: £25 Medium dog: £35 Large dog £45

44 West Street, Isleham
@TubsandTails
www.tubsandtails.com

Tubsandtails@gmail.com
07714466726



Green Wood Tree Surgery



**Knowledgeable, Competitively priced,
Local based Company.**

Call us to discuss your tree's health needs on 01353 688098

Tree Felling - Dismantling - Tree reduction - Hedge Cutting - Stump Grinding

Garden Maintenance - Grass Cutting - Surveys - Consultancy

www.greenwoodtreesurgery.co.uk

City & Guilds NPTC
STREET WORKS
Cheektrade.com
Registered with the NPTC
BESPOKE Tree Work

FARMER'S MARKET

2019 Dates for your diary

NEW TIMES 10am - 1pm



20th April * 18th May
* 15th June * 20th July * 17th August *
21st September
* No OCTOBER *
16th November * 21st December

**BUY LOCALLY
BARLEYCORN POP UP CAFE**

The Beeches, 32 Mill Street, Isleham, CB7 5RY



**3RD
SATURDAY OF
THE MONTH**

Vendors
Welcome!

For more information call: 01638 780057 or EMAIL
louise@thebeechesisleham.co.uk