

Isleham Informer

December Edition • Issue 88 • December 2018 • www.isleham-village.co.uk

Poppy Project

On a cold night back in November last year Brian Challis was outside the front of the Co-Op selling British Legion Poppies when an impromptu chat with Sally Poulter sparked an idea. Wouldn't it be wonderful if our village could create a big Poppy display to commemorate the 100 year Anniversary of the end of World War 1.

Brian popped home and posted the idea on Facebook's Isleham News page, could the creative people of Isleham rise to the challenge? I tentatively suggested that I may be able to help co-ordinate the event and the wheels were set in motion in our creative community to start knitting and crocheting as many Poppies as they could. Lots of wonderfully creative people offered to start creating straight away and patterns for poppies were posted in the Isleham Informer and on the facebook group.

Fast forward to June this year, family and work life were getting very busy and I was starting to panic that maybe I had bitten off more than I could chew, I popped a request for some help and the lovely Brenda Downey (who was also super busy) offered to help set up our first meeting. Due to the school holidays the first meeting didn't take place until September this year, somehow we didn't feel daunted by the lack of time left, we just knew that we could create something wonderful in time for November 11th.

After the first few meetings, with a fantastic group of people with amazing skills the plan was set and the 100s of Poppies created by all those talented creative people and the primary school were being put to good use.

A large camouflage net was sourced by Brian Challis from Mildenhall airbase, another decorative camouflage net (to add the poppies to so they could be kept in situ for next year) was bought with contributions from the group. A scaffold structure was designed by Robert Savage who brought a wonderful scale model that he had made to a meeting and the scaffolding was donated by Pound Lane Free Church. It was all coming together beautifully.



The time had come to start creating the main display. We all got together in the upstairs room of the St Andrew's Social centre, we had a lovely few evenings of adding poppies to the net and chatting, everyone just seemed to take on a job and we all worked together in perfect harmony. We were now ready to show off our creation!

Early one October morning a small group gathered to erect the scaffold structure and add the net to it, it worked like a dream (I must say, mainly thanks to Robert Savage's fab Engineering and planning skills), all our hard work had paid off and the display was now visible to the whole village.

But, we didn't want to stop there, up-lighting was added, an old tennis court net was put to good use in the Church to display the Primary School's poppies, Pre-School's wonderful Poppy artwork was displayed in the Church along with other amazing works of art (created by Chris & Claire Tombs and Sam Lee-McCloud), poems, photos (from Vernon Place), war themed posters (from Kim Downey) were also added to the collection. The Church was then lit up red (thanks to Walter Gunston and Robert Savage) and Walter's soldier silhouettes were placed in the Church. The Scout Group also got involved, creating Poppy pebbles for each of the men who died from the village. The project was nearly complete.

One last thing remained to do, Mary Wightman had commented in a meeting that she had once attended a school assembly when some of the men who fell in the village had been put on the chairs that you were to sit on. This sparked an idea, I thought it would be lovely to have the men who fell in our village placed on the pews of





Family run Farm, Isleham
with On-Farm Butchers Shop

Order now
for Christmas



TFM Butchers

FENROSE FARM, 1 Fen Bank, Isleham CB7 5SL

Tel: 01638 780994/780431

Email: info@tfmbutchers.co.uk

www.tfmbutchers.co.uk



the Church where they once might have sat. I set about finding out as much information as I could about them and gathered photos of as many of them as I could to create little cards for each of them. Brenda and I met at the Church and added them to their pews, in a rather magical moment, Brenda commented that her relative should be on one of the cards, when she told me his name I looked down, of the 59 men who sadly lost their lives I had two names in my hand, one of which was Brenda's relative Albert 'Bertie' Fenn. I handed him back to Brenda and suggested she put him in her favourite place to sit which she did along with her Poppy.

To our amazement, photos of the Poppy Project started to appear all over the local news pages on fb and we were asked to chat about the project on BBC Radio Cambridgeshire, Brian Challis gave a very moving interview about the whole thing. This was fantastic as it created lots of public interest and saw lots of people coming into the Church to read about the Soldiers and people have often been seen stopping in their tracks when they see the main Poppy display.

A huge thanks to all those involved in the project, every single one of you who knitted and crocheted your little hearts out and all those involved in the organising side of the project – you are all stars! Thanks to Walter Gunston for his displays in the village and a special thanks to Robert Savage, Brian Challis and Brenda Downey who really were an integral part of the project – it couldn't have happened without them. If you want to be involved next year then keep an eye out on the facebook group 'Isleham Poppy Project' where I will post about future meetings.

59 men lost their lives from our village, some families lost all their children, 59 men never returned to be with their families. We hope we did them all proud Lest We Forget

With thanks,
Zoe Leeson

MANCHETTS
VEHICLE SALES & SELF-DRIVE VAN HIRE CENTRE



LDV ISUZU

Leasing, Contract Hire and
Hire Purchase available

LDV Van Sales
V80 SCRAPPAGE
SCHEME

TOWARDS A NEW V80 IDV VAN

WWW.MYLDV.CO.UK

Self drive van hire from £30 per half day
VANS & TIPPERS AVAILABLE

Manchett's Vehicle Sales and Self Drive Van Hire Centre

Tel: 01638 674491

Unit 15, Victoria Way, Newmarket, Suffolk, CB8 7SH

Isleham Primary School

Our Year 6 School House Captains did a fantastic job representing the school in the Isleham Remembrance Service 2018 on the 11th November. They joined the village procession to the war memorial and presented a poppy wreath on behalf of the school before attending the Sunday service of remembrance. It was wonderful to see the school's poppies interwoven with the many knitted poppies created by local people both inside and outside the church on the cascading nets. Each child in the school made a poppy with a large button attached and wrote their name on it. Some of the Year 6 children's poppy pastel pictures were also on display in the church. Many Isleham School children were also present on the day with the Cub, Scout and Beaver group attendees, and led the procession to the Church. Well done to all involved. This was



a beautiful and poignant memorial service to remember those from Isleham who lost their lives in World War 1 and World War 2.

Mrs Sarah Skillern, Head Teacher





Isleham Informer

The *Isleham Informer* is published six times a year, every other month.

CONTACTS • Advertising Emma Joy-Staines T: 07809244895 E: emmajoystaines@yahoo.co.uk • **Design & layout** Lisa Alderson T: 07947642333: lisa@laconsult.co.uk • **Features** Glenda Preece T: 01638 780734 E: gjpreece@aol.com • **Distribution** Fred Preece T: 01638 780734 • **Published by** Isleham Parish Council • **Printed by** Gipping Press www.gippingpress.co.uk

NEXT ISSUE: Published February 2019 The deadline for all editorial and advertising is 10th January 2019

DISCLAIMER: The *Informer* would like to point out that we have neither tried nor tested all of the products and services advertised in these pages and therefore cannot accept responsibility for the veracity of any claims made.

Useful Information

Mobile Library

	Arrive	Depart
2nd Wednesday Church Street	12.15pm	1.00pm
3rd Thursday Mill Street	3.15pm	4.15pm
4th Wednesday Church St	9.45am	10.10am

Useful phone numbers

Emergency for Police, Fire, Ambulance.....	999
Police (Non-emergency).....	101
Accident & Casualty (Addenbrooke's).....	01223 217118
Addenbrooke's Hospital (Cambridge).....	01223 245151
Newmarket Hospital	01638 564000
West Suffolk Hospital (Bury St Edmunds).....	01284 713000
Staploe Medical Centre (Soham)	
- Appointments.....	01353 624121
- Prescriptions & Dispensary.....	01353 727695
- Enquiries, Home Visits, Emergencies.....	01353 624123
Minor Treatment Centre, Ely.....	01353 656675
NHS Direct (for advice).....	0845 4647
GP Out-Of-Hours (non-emergency)	111
Electricity Emergencies	0800 7838838
Gas Emergencies	0800 111999
Anglian Water Leaks	0800 771881
- 24 hour	0845 7145145
Social Services - office hours.....	0345 0455202
- out of hours emergency	01733 561370
Refuse Collection.....	01353 665555
RSPCA	07599 522716
- Cruelty line.....	0300 1234 999
Citizens Advice Bureau	Ely 0845 130 6442
	Mildenhall 01638 712094
	Newmarket 01638 665999
District Councillor: Derrick Beckett.....	01638 780476
Parish Council Clerk: Richard Liddington	01638 781687
MP: Lucy Frazer.....	lucy.frazer.mp@parliament.uk

Dates for Your Diary

If there is anything you would like included here for future issues: contact Glenda Preece, T: 01638 780734 E: gjpreece@aol.com.

REGULARS

Coffee Morning at the Social Centre, Tuesdays 9am-noon

Bingo at the Bowls Club every Wednesday evening

Contact Doreen 780836

Bingo at the Bowls Club every Wednesday evening

Contact Doreen 780836

December

Mon 3rd	Parish Council	The Beeches	7.15pm
Wed 5th	Chocolate Party	The Beeches	6.45pm
Mon 10th	XMAS BINGO	Bowls Club	7pm
Wed 12th	Under 5s Xmas Fair	The Beeches	
** Father Christmas will be visiting **			3.30-5.30pm
Thurs 13th	W.I. Christmas Party	The Beeches	
Fri 14th	Book Club Xmas lunch		
Sat 15th	Farmers Market	The Beeches	10 - 12noon

January

Thur 10th	W.I.	The Beeches	7.30pm
Thurs 10th	INFORMER DEADLINE		
Fri 11th	Book Club		2pm
Mon 14th	Parish Council	The Beeches	7.15pm
Thur 17th	Isleham Society	The Beeches	7.30pm
Sat 26th	ABBA SENSATION at The Beeches		

Village Notes

POPPY APPEAL 2018

Thank you to all who contributed so generously to the 2018 appeal. The village really came together to mark the 100th anniversary of the end of World War I and to remember all those from the village who died in both World Wars.

Special thanks are due to Brian Challis who, once again, spent many hours collecting around the village. This year he collected in excess of £1,000!

The total amount raised & sent to the British Legion Poppy Appeal was £2,721

Gill Savage & Pauline Wilkes (Poppy Appeal Organisers)

Isleham Parish Council

Due to a resignation there is a vacancy for a Councillor on the Parish Council. If you might be interested in this then please contact the Parish Clerk Jeanette Broderick for further information.

Telephone 01638 781687,
email islehampc@gmail.com



Andrew Myson

Painting & Decorating

24 Hall Barn Road, Isleham
Ely, Cambs, CB7 5QZ
T: 01638 780680 M: 07775673480
a_myson@yahoo.co.uk



Winter Warming Massage



Why not relax with a Winter Warming massage, allowing your mind to drift amongst the warming aromatherapy oils on my heated massage table.

My Winter Warming massage uses aromatherapy oils to clear airways and warm the body systems. The soothing massage is then finished with a wonderful cupping facial massage, helping to encourage the draining of sinuses and allowing you to feel totally relaxed and wonderful.

For an appointment and more information please contact me, Lisa Milne, at
lisamilnemassage@gmail.com
01638 780186 or 07711 699920



Meadowview Massage

Member of FHT - Fully insured

Notes from The Editor

For the past two years Lisa Alderson has laid out every edition of the Informer, showing a great deal of patience to our requests to 'just add one more thing'. Thank you Lisa, you have been great.

I hope you enjoy this December edition with the photographs and articles showing how Isleham remembered all those who have given their lives since 1914. Thank you to Zoe Leeson who has written so beautifully about the Poppy project.

In this final edition of 2018 we also have to say thank you to all the people who deliver The Informer, to Fred who organises distribution, and thank you also to every one who contributes, to those who advertise with us, and to Emma who manages the adverts. We must also thank Vernon Place who provides us with so many photographs of events in Isleham.

Merry Christmas to you all, and may 2019 bring you peace and happiness.



**St. Andrew's Church
Festival of Light**
Sat 1st and Sun 2nd Dec
Sat 8th and Sun 9th Dec
3:00 – 6:00 p.m.
with
**Christmas Fair Saturday 1st
December.**
Community Carols
Sunday 9th December 4:00.

Grand raffle
Mulled wine and mince pies
Tombola
Children's crafts



Karen's Grooming

All your pet's
grooming requirements
on your doorstep

01638 781791
07803 548573



KARMA FARM www.islehamfen.co.uk

8 Fen Bank, Isleham; Tel: 07900 961217



The Beautiful Eco-Campsite on Isleham Fen

Village clubs: information

CLUB	CONTACT	DAY/DATE	TIME	PLACE
1st Isleham Beavers (boys & girls 6–8 yrs)	Emma Bucknall 07807 349754/islehamscouts.org.uk	Tuesday	5.15-6.15pm	The Beeches
1st Isleham Cubs (boys & girls 8–10 yrs)	“	Tuesday	6.30–8.00pm	The Beeches
1st Isleham Scouts (boys & girls 10–14 yrs)	“	Tuesday	6.30–8.00pm	The Beeches
Beeches Entertainers	Barbara Murfitt 075101 73412 / 01638 780 373			
Board Games	Alison Young 01638 780351	Last Thursday	2.00–5.00pm	High St. Church
Book Club	Doreen Spiers 01638 780783	2nd Friday	2.00pm	The Beeches
Bowls Club	Sylvia Pinder 01638 720875			The Bowls Club
BridBrownies	Bridget Clements 016353 624103	Thursday	6.00 – 7.15pm	High St. Church
Busy Bees	Pre-School 01638 781212	Wednesday	9.30 – 11.30am	The Beeches
Craft Club	Hazel Thompson 01638 780633	Tuesday	1.30 – 4pm	Limestone Centre
Gala Committee	Lisa Alderson 07947642333	3rd Monday	7.30pm	The Beeches
Isleham Society	Clive Patterson 01638 780669	3rd Thursday	7.30pm	The Beeches
Isleham United Youth FC	Steve Isaacson 07545395573			
Isleham United FC	Jon Marks, by email at jonmarks1965@yahoo.co.uk or 07920843914			
Isleham Tennis Club	Clint 079 4644 1351			
Isleham Cricket Club	Chairman - Adrian Sheldrick 07775 522765 1st Team Captain- James Tilbrook 07884 582730			
Playgroup (IUFA)	Jennie O’Sullivan			
Pilates	Jo Simcock-Simms 07974 653775	Monday	10.00 - 11.00am	The Beeches
			6.00 - 9.00pm	The Beeches
		Wednesday	12 - 1.00pm	The Beeches
		Friday	12 - 1.00pm	The Beeches
Tai Chi	Dave Coogan 01638 781705/ peaceful warrior teaching or mail.com			
		Wednesday	1.15 - 2.15pm	The Beeches
The Beeches	Tel: 01638 780097			
WI	Glenda Preece 01638 780734	2nd Thursday	7.30pm	The Beeches

- If you would like your club, society, organisation’s news and photos, or anything you (and the *Informer* team) think is of interest to the village to appear in the *Isleham Informer*, please contact any member of *Informer* staff - see page 3 for contact details. Please supply your article and photos by January 10th for our February issue. We also need the photographer’s name where necessary and details of photos for captions: please do ask subjects to give their permission to appear in the *Informer* - children should have parents’ permission.

FARR

PAINTING AND DECORATING

Andrew Farr

14 East Fen Road,
Isleham CB7 5SW

Tel: 01638 780375

Mob: 07768 328387

Interior and exterior

Painting and decorating

Paper hanging
Commercial and
domestic
Over 30 years'
experience



theWI
INSPIRING WOMEN

Isleham WI

We have ended the year on a musical note - or two.

In October we welcomed the duo 'Lost in Translation' who entertained us with guitar playing and singing. We enjoyed memories of songs from our birth to the present day and hopefully we were not too out of tune when accompanying.

With Christmas in mind our November meeting was Compose a Carol. We were guided by the enthusiastic Quintus Benziger and even the most unmusical of us ended the evening singing our compositions.. Quintus then recorded our 3 groups singing their tune and is going to send us a CD.

Our December meeting will be our Christmas dinner (singing on the bus home).

We meet at 7.30pm on the 2nd Thursday of each month at The Beeches. If you are interested do come along, you will be very welcome. For further information contact Glenda Preece

Tel: 01638 780734

email: gjprece@aol.com



Plumbing, Heating & Drain Services

BLOCKED DRAINS CLEARED

- Gas Boiler Service & Maintenance
- Power Flushing to Heating Systems
- Home Buyers' CCTV Drain and Plumbing Surveys
- All Plumbing & Heating Repairs and Alterations
- All Work Guaranteed

TEL: 01638 742873
MOBILE: 07932 773515
7 Ness Road, Burwell
Cambridge, CB25 0AA



For all your building requirements

All home renovation projects including extensions, loft and garage conversions, alterations, garden walls, driveways and patios.

Call Alex for a free no obligation estimate on your building project....

01638 781679/ 07909915612

www.kingbuild.co.uk info@king-build.co.uk

Pooley Bendall Watson SOLICITORS

For a friendly and professional approach

- Domestic & Commercial Property
- Family & Matrimonial Matters
- Wills, Probate, Trusts & Tax
- Company & Employment Law

2 Three Cups Walk, Fore Hill, Ely Cambs CB7 4AN
Tel: (01353) 666075 Fax: (01353) 666162
Email: info@pbw.uk.com

Also at: 4b Church Street, Isleham, Cambs CB7 5RX
Tel: (01638) 780170 Fax: (01638) 780190

P B W Solicitors Ely Ltd is a Limited Company, trading as Pooley Bendall & Watson Solicitors. Registered in England and Wales number 9340474.
Registered office: 2 Three Cups Walk, Fore Hill, Ely Cambs. CB7 4AN

Rothwell's
Carpet Cleaning

01223 832 928

www.Rothwells.biz

Carpet Cleaning

& Stone Floors, Upholstery, Rugs

A few points that make us stand out from the others,

Rothwell's has been in business since 1993.

We're an honest local family firm.

Our large truck mounted machines mean more cleaning & drying power for the best results possible.

Members of both the NCCA and TACCA.

We will move the furniture for a thorough clean.

100% satisfaction or it's FREE.

Call Oliver and Max Campbell for expert help today.

HIS 'N' HERS SCHOOL OF MOTORING

Established 1992

David Eavis A.D.I. Grade A

Sarah Eavis A.D.I. Grade A

* Highest grade instructors.

* Over 25 years' experience.

* Patient, reliable and DVSA qualified.

* Student and block booking discounts.

* Competitive prices.

www.hisnhers.org Tel: 01638 781214

email: hisnherssom@btinternet.com



Thank you

The Beeches committee and Trustee's would like to say a huge thank you to all those from The Beeches Entertainers, for another fantastic performance.

Two evenings of comedy and satire saw 197 people over both days join us to watch The Beeches Entertainers in action. With 2 performances in one evening "Johnny don't jump" and "The Quiet Life" there must have been quite a few lines to be learnt and a few costume changes taking place. Only those who saw the show will know if Johnny didn't jump and if the quiet life was indeed quiet!!

Thank you to you all once again for your continued support.

These guys take a lot of their time to rehearse to be able to perform for us in which their aim is to improve the facilities within the Beeches, to have fun and ultimately... entertain YOU! If you haven't seen these guys and gals in action - be sure to keep your eyes peeled for their next event!

Watch this space!!

FREE Estimates & Advice



- All Driveways & Block Paving
- Site & Garden Clearance
- Driveway Cleaning & Sealing
- Fencing, Trellis Work & Decking

- Patios & Paths
- Turfing & Seeding
- Concrete Crushing
- Grab Hire & Digger Hire

amsbuildingandlandscaping.co.uk

OFFICE: 01638 721 893 | SITE: 07789 261 266

Letters to the Editor

Dear Editor Success Story!

What a little gem of a community newsletter you have! You may remember in the October issue I put in a request appealing for information regarding my family history.

I only just started researching back in August this year. At that time I didn't even know the name of my late Grandmother. However, a few birth and marriage certificates later, I managed to find out she was called Vera Starling and located her to Isleham.

I then started to explore Isleham on the internet, and came across the Informer. I thought it was a bit of a long shot, but decided to give it a go and send in a request in the hope that someone may remember her.

I am so pleased I did. A lovely lady called Anthea Winters came forward with some information. It turns out she was a relation to my Grandmother, and I have since had a couple of lovely chats with her over the telephone.

The icing on the cake was, she had a wonderful photograph of my Grandmother, as a Standard Bearer for the British Legion. I couldn't believe my luck, and the timing seemed perfect with Remembrance Day just around the corner.

I would like to thank everyone at the Informer for their time and efforts, and also a very big thank you to Anthea for giving me a brilliant picture to treasure! I thought I would share it with you. My Grandmother is the Standard Bearer on the left.

Thank you again, Julie Flynn

And...

I would like to recognise the tireless and ever giving work that Wally Gunston does in, for and round Isleham. Over the Armistice period we've had flags on poles at the Beeches, decorations to telephone boxes and much more. Whilst I stood listening to the speeches outside the church on Sunday morning I looked down Pound Lane to see him standing there directing traffic, missing the ceremony and once again making a sacrifice for others.

For this and all the summer support of Gala, and the many other things he does quietly, not seeking fame or recognition, Wally you are my hero sir, and I thank you for all you have done, all that you do, and all that I hope you will continue to do, that helps to make Isleham the great village it is.

In many other parishes each year that have an award for the person of the year. Wally, I would like you to know that you would receive my vote for Isleham.

Best wishes and thanks again.

Mark Goldsack, Robins Close



Isleham Society

Are you interested in our village, its history, traditions, its preservation and development.

Then you might consider coming along to one of our meetings at 7.30pm at The Beeches on the third Thursday of each month. No meeting in August or December.

Though primarily a group of Isleham residents, the Society welcomes members and visitors from all over. It will flourish as long as sufficient residents and friends of Isleham – young as well as old – continue to care about all aspects of our village, and become active members.

We have a variety of speakers from around the area and two of our meeting dates are actually trips out to local places of interest, recently these have included Turners of Fordham & Burwell museum. Visitors are welcome to all the meetings. Annual membership is £10 per person or £15 a couple. Visitors are always welcome @ £2 per visit.

Our October trip saw us visiting Burwell museum with an afternoon tea, a very interesting time was had by all. Our next planned speaker for November will have been Philip Clark with a talk on "The role of a community green spaces manager".

The committee met at the beginning of November and a variety of potential speakers were put forward for our 2019 meetings and with the assistance of the society secretary we are now putting together next year's program.

We are still in need of a permanent vice-chair and programme secretary. Both of these posts are not arduous but help to spread the small work load. Please feel free to approach anyone on the committee if you would like to volunteer for either of these roles.

Several years ago the Society produced a leaflet 'Beating the Bounds', a leaflet illustrating the Parish Paths in Isleham. These paths are an important part of our heritage, giving an insight into the way of life of our forbears who used them daily to go about their business, copies are still available.

Since taking over as chairman in February 2018 I have approached a local artist/illustrator to produce an updated version of "Beating the Bounds" and also a local map. Both these are now very close to being completed and then go to print. If all goes to plan we should have the first print run out by late January.

I have also taken on the task of restoring all the albums held by the society; this involves scanning all photographs to ensure we have a digital copy. After scanning all the pictures they will need to be catalogued and sorted prior to being placed into new albums. Please have a look through your old photo albums or boxes and if you have any old photos, pantomime programmes etc. that you would allow the society to use please contact me. When I say old these can be anything from recent years to over 100 years old. All photos or cuttings, tickets etc will be scanned and the originals returned accompanied by a digital copy; we can if authorised keep the originals for the albums.

Clive Patterson Isleham Society Chairman



Ringers Remember

We rang on Sunday evening at St Andrew's Church as part of Ringers Remembers, a nationwide scheme to encourage new and returning ringers to ring for the 100th anniversary. Behind us is a board for a quarter peal of 1260 changes of Bob Doubles rung for the Silver Jubilee in 1977 including both Walter Gunston and his father.



AVOCET ELECTRICAL TECHNOLOGY

NICEIC PART P APPROVED ELECTRICAL CONTRACTORS

Avocet Electrical Technology are electrical contractors working throughout Cambridgeshire, Suffolk and across East Anglia.

We cover electrical projects for the commercial, industrial and agricultural sectors and are NICEIC Part P Registered for domestic projects.

Our expertise includes:

- Bespoke LED lighting design, supply and installation
- Installation of single and three phase systems
- Maintenance and repair of agricultural, commercial, industrial and domestic installations
- Low energy lighting consultation
- Inspection and testing
- Fire alarm design and installations
- Home automation

Please do not hesitate to contact us with any query.

T: 01638 780033 M: 07800 832619
E: info@avocet-electrical.co.uk W: avocet-electrical.co.uk
 Avocet Electrical Technology 43 The Causeway Isleham Cambridgeshire CB7 5TA

ABBA SENSATION

22nd FEBRUARY 2019

2nd DATE CONFIRMED!!!!

The Beeches are excited to announce
 ABBA Sensation will be BACK AGAIN in
 February!!

After a quick sell out of the first
 date in January we welcome ABBA back to
 The Beeches!!

Available from The Beeches,
 Isleham, CB7 5RY
 Cash or Card payments
 01638 780097
www.thebeechesisleham.co.uk
louise@thebeechesisleham.co.uk

Tickets on Sale Now!

£12.50 pp

What's on at The Beeches



MONDAYS	10.00am - 11.00am	PILATES
	6.00pm - 7.00pm	PILATES
	7.00pm - 8.00pm	PILATES
	8.00pm - 9.00pm	PILATES
TUESDAY	5.15pm - 6.15pm	BEAVERS
	6.30pm - 8.00pm	CUBS
	6.30pm - 8.00pm	SCOUTS
WEDNESDAYS	9.30am - 11.30am	BUSY BEE'S PLAY SESSION
	12noon - 1.00pm	PILATES
	1.15pm - 2.15pm	TAI CHI
	5.45pm - 7.15pm 7-8pm	CHILDREN'S TEXTILE CLASSES ADULTS BALLET CLASS
THURSDAYS	4-5pm 7.30pm - 10pm	CHILDREN'S BALLET CLASS WI MEETINGS: 2nd THURSDAY OF THE MONTH
	7.15pm for 7.30pm Start	ISLEHAM SOCIETY: 3rd THURSDAY OF THE MONTH
FRIDAYS	12noon - 1.00pm 2.00pm - 3.30pm	PILATES BOOK CLUB: 2nd FRIDAY OF THE MONTH
	9.30am - 12.30pm	BREAKFAST ROLLS (Football season only Sept - April)
SATURDAYS / SUNDAYS		
SATURDAYS / SUNDAYS	9.30am - 12.30pm	BREAKFAST ROLLS (Football season only Sept - April)
SATURDAYS / SUNDAYS	TIMES MAY VARY	MOSTLY EVENT DRIVEN AT WEEKENDS

Isleham Cattery

Cat Care by Cat Lovers

Built and managed to Feline Advisory Bureau standards

All family size chalets

Inspections always welcome

Opening hours

Mon-Sat: 10:00-12:00 and 2:00-6:00

Sun and Bank Hols: 11:00-3:00

57 Waterside, Isleham, Cambs CB7 5SH

www.isleham-cattery.co.uk

01638 781367 — lorraine@isleham-cattery.co.uk

Stelen's Curtains & Blinds



We are proud of our excellent customer service and the quality of our gorgeous, locally made products.

Call or email today for a chat about your requirements and to arrange a free no obligation quote in the comfort of your own home

Helen Neale 07903 368778
helen@steveandhelen.co.uk

Find us on Facebook
Beautiful fabrics, a great selection of poles & tracks and a full fitting service

CARPENTRY SERVICES

Est 1970

For all General Carpentry and Building Work

**

No Job Too Small

**

Grant Hounsome
29 Robins Close, Isleham
Tel : 01638 780358
Mobile: 07801950627
carpservisleham@yahoo.com



Kitchens - Bathrooms
Doors - Windows
Interior - Exterior
Maintenance
Lodge Gables over boarded
And More ...

County Councillor

Dear Isleham Resident

It was an immensely proud day for me in October to receive your support and to become your County Council representative. I promise to be contactable, approachable and most of all to listen to your issues and concerns.



Isleham is an amazing community and whilst change is inevitable it is my job to support quality developments and only those that will enhance our village. I am also well aware of how poorly serviced we are with public transport. I have meetings in December and January with the Mayor and Bus companies as I look to secure a bus service that could provide transport at least to Fordham or Soham from where one could access buses to Newmarket, Ely and Cambridge.

Finally for now, two quick notes. What those involved did for the poppy display was quite amazing and I thank you all. Secondly, the community spirit of Isleham is never better displayed than during the Christmas period. Our 3 churches, the Beeches, and our pubs and restaurants will all see great fun and camaraderie. I'd urged you to check on your neighbours and those we know that are maybe on their own. Everyone has the right to feel safe and enjoy some happiness.

So with much to do in 2019 and beyond - I wish you all an enjoyable and happy Christmas and every happiness for a great and fun filled new year.

Merry Christmas,

Cllr Mark Goldsack
Tel 07831 168899
Email mark.goldsack@cambridgeshire.co.uk

WWW.CSPSERVICES.CO.UK

Computer/laptop repairs, upgrades & new builds, virus & spyware removal plus data recovery.

Printer cartridges at good prices.

Telephone points, routers & networks installed & set up.
Spare monitors, keyboards, mice & printer available for short term loan when yours goes wrong.

Watch batteries fitted.

Transfer 35mm slides to computer.

Contact us:
Tel: 01638 780669 Mob: 07771 830336

Email: enquiries@cspservices.co.uk or patterson.clive@gmail.com
Website: www.cspservices.co.uk or via www.islehamwest.co.uk

Isleham Informer is a unique advertising opportunity for any business wishing to connect with the 2000 villagers

please email Emma for more details:

Emmajostaines@yahoo.co.uk

Advert sizes and cost as follows:

1 page, £82.50 (colour £165)

1/2 page, £42.50 (colour £85)

1/4 page, £22.50 (colour £45)

1/8 page, £12.50 (colour £25)

1/12 page (Karma Farm) £7.50

10% booking on annual subscription

An Evening of Comedy & Satire

The Beeches Entertainers recently played to two packed halls for their evening of Comedy & Satire at the start of November.

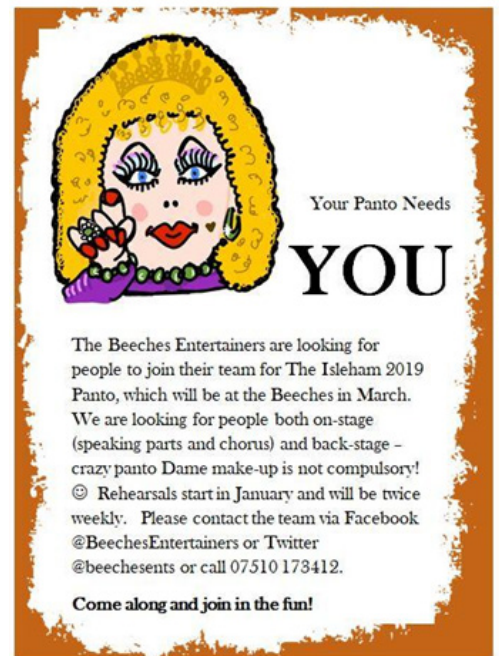
Performing a challenging two plays on both nights the audiences were introduced to various characters in the satirical "Johnny, Don't Jump" with the lead role being played by John Bedford, and various friends, family and interlopers stopping by in an attempt to stop Johnny from a rather poorly thought-out jump from an office block! "I don't make a habit of it, it is my first one!" Some of them having better success and influence on Johnny's decision than others!

The second play was "The Quiet Life" where Charlotte Randall (played by Marie Bowker) the escaped mastermind criminal "The Scarlet Fox" got more than she bargained for when she ended up in a somewhat bizarre local pub and even more bizarre local characters, including a village idiot "My family have been idiots for years!", a witch, a spy who insisted he was an author, a rather "questionable" Reverend, an elephant on a roof and a six foot squirrel (of course, why not?), not to mention some very strategically placed bails of hay in the opening act! (And nobody must mention what happened in Basingstoke!)

The performances were the fourth offering from the Beeches Entertainers, who previously had sell-outs on their hugely successful pantomime earlier in the year and murder mysteries previous to that. With some great feedback from the audiences, the team are going from strength to strength as they already start preparing for the next Isleham pantomime, to be held at the Beeches in March (look out for their call for new members below!) and planning the rest of their 2019 programme.

Cast photos, courtesy of Steve Evans

Over the course of both evenings over £900 was raised which, like all the profits from the Beeches Entertainers' shows, goes to improving facilities at The Beeches Community Centre. In addition a programme collection raised £60 for the Royal British Legion



Many, many thanks from all at Burwell Museum and Windmill!

Thank you to everyone who has supported, visited and volunteered at Burwell Museum and Windmill this year. We've had a really successful season, with highlights including an amazing 628 visitors on National Mills weekend in May and another great turnout for Heritage Open Days in September. We've had over 3,700 visitors over the year and our amazing volunteers have put in over 4,000 hours between them to make sure that the museum continues to be a really great day out. Thank you to everyone who has been to the museum either as a visitor or a volunteer in 2018, and if you haven't come across us yet, we hope to see you in 2019!

Become a volunteer

Although we are now closed to visitors until Easter weekend 2019, there is still a lot going on behind the scenes and WE NEED YOUR HELP!

Are you enthusiastic, community-minded and want to offer some time to a local charity? If this sounds like you then please get in touch about becoming a volunteer with the museum. No previous experience required and you'll receive a very warm welcome! We're especially looking for people who can help us to look after our site and buildings; volunteers work on the museum and mill throughout the winter on Tuesdays. Interested? Please email volunteers@burwellmuseum.org.uk or call Alison on 01638 605544 or 07855 184549.



Bowls Report

The beginning of September brought the curtain down on the 2018 internal club competitions and the roll of honour was as follows:

Rogues gallery!



	Winner	Runner-Up
Mens Singles	Robert Burling 21	Mark Dunbavin 13
Ladies Singles	Carol Wells 21	Sylvia Pinder 17
Handicap Singles	Michael Taylor 21	Colin Dunn 14
Pitcher Memorial Singles	Barry Grimwood 18	Colin Dunn 2
Pairs	Ann Cant & Barry Grimwood 21	Michael Taylor & Darren Dunbavin 14
Triples	Andrew Human, Keith Peters & Barry Grimwood 24	Cathy Storey, Joyce Hazelwood & Robert Burling 7
Tenrich Trophy	Keith Peters & Darren Dunbavin 16	Joyce Hazelwood & Mark Dunbavin 10

Home-Start Cambridgeshire's aim is for every child to have the best possible start in life.

The charity supports families across the county who are going through difficult times. We are in an exciting period of change and are keen to appoint 2 Trustees who are passionate about supporting families with young children, keen to make a difference, creative and who enjoy being part of a team.

Both will be enthusiastic promoters of the charity and will be able to give time and energy to their role. Ideally one of them would have significant experience in HR.

Contact the office on 01480 700242 or email office@homestartcambridgeshire.co.uk

www.homestartcambridgeshire.co.uk



Calmer Counselling
Keep Calm & Talk To Someone

Stressed? Depressed? Worried?
Need to talk to someone?

Counselling Service based in Isleham, easily accessible from A14, Ely, Newmarket and surrounding areas.

Contact Heather Boylan for further details or to make an appointment.

Email calmer-counselling@outlook.com or www.calmer-counselling.co.uk

Phone **07410 381728**

Daytime or evening appointments available.

West Street, Isleham CB7 5SD

Fenland Spirit Services

Lawnmower Sales, Servicing & Repairs



Servicing from £45

Petrol lawnmowers and garden machinery fully serviced by a qualified engineer

Blade sharpening, collection available

Refurbished mowers sold

Ten Mile Bank, Littleport

Call us on 0775 383 6499

Or find us on Facebook/fenlandspiritservices



Woodpecker Joinery
SPECIALIST JOINERY
MANUFACTURERS

Established 1993

DOORS ■ WINDOWS ■ STAIRCASES ■ SPECIALIST MOULDINGS
BUILT-IN FURNITURE ■ ARCHITECTURAL JOINERY

Built to your exact specification or by using our Design and Build Service
- Fitting Service Also Available -

WE ALSO PROVIDE A GENERAL CARPENTRY MAINTENANCE AND REPAIR FACILITY
A TOTALLY PROFESSIONAL SERVICE WITH EXCELLENT QUALITY GUARANTEED

FOR A FREE QUOTATION AND ADVICE
TELEPHONE: (01638) 781789 MOBILE: 07870 695466
EMAIL: woodpeckerjoinery@msn.com
43 Hall Barn Road, Isleham, Ely, Cambs, CB7 5QZ

ANYTHING SUFFOLK
Celebrating Suffolk life & landscape

Suffolk Prints, Calendars & Gifts
Shop online at www.anythingsuffolk.co.uk

Tel: 01449 721599 | Email: anythingsuffolk@gippingpress.co.uk

P.J.Carrington
Gas Heating and
Plumbing Services

Servicing and Installation
Domestic Natural Gas L.P.G.
Boilers and Appliances
Part 'L' Heating Efficiency
Gas Fires
Underfloor Heating
Mobile Park Homes, Leisure Vehicles, Boats
Unvented Domestic Hot Water Systems
Oil fired boiler service and repair

Bathrooms, Wet Rooms
Kitchens
Fully Certified
Fully Insured
Landlords Certification
No Job Too Small!
Oil fired boiler service and repair

T: 01638 781790
M: 07533 172539

E: carringtonpj@live.com

W: www.pjcarringtonheatingandplumbing.co.uk



68 Isleham Marina
Fen Bank
Isleham
Cambs CB7 5SL

CHURCHES

St Andrew's Parish Church

All are welcome in this community of faith in Jesus Christ. St Andrew's is part of the Three Rivers Group of parishes, also including the parishes of Chippenham, Fordham, Kennett and Snailwell. Do join us for worship and fellowship.

Rector: David Cleugh, The Vicarage, 24 Mildenhall Road, Fordham, CB87 5NR 01638 723010 davidrcleugh@gmail.com
Associate Priest: Sue Potts, The Vicarage, Chippenham, CB7 5PP 01638 721662 revd.sue@icloud.com

Churchwardens: Rob Savage 01638 780218 robert.savage@islehamchurch.org.uk,

Kathy Carver kathy@carverfamily.org.uk

Licensed Lay Minister: Carol Taylor

Authorised Lay Minister and Choir Director:

Mark Liversidge 01638 781696 mark.liversidge@islehamchurch.org.uk

Parish Intern: Mel Takac mel.takac@gmail.com

Tower Captain: Ruth Ogden 01638 780646 ruth.ogden@islehamchurch.org.uk

Webmaster: Andrew Stephens 01638 781468/780229 www.islehamchurch.org.uk

Worship

Our main Sunday service is at 9.30 am with Junior Church meeting in the social centre. On the Third Sunday of the month we worship together at an All Age Communion Service.

Monday: 9.00am Morning Prayer at 7, The Close, Kennett

Tuesday 8.15am Morning Prayer Social Centre Isleham

Wednesday 8.15am Morning Prayer St Margaret's Church, Chippenham

7pm Compline St Peter's Church Snailwell

Thursday 8.30am Holy Communion (BCP) St Peter and St Mary Magdalene Church, Fordham

Friday 8.15am Morning Prayer St Peter and St Mary Magdalene Church, Fordham

6.30pm Choir Practice: St Andrew's Church (beginners welcome)

7.30pm Bell Practice: St Andrew's Church (beginners welcome)

Social: Coffee Morning every Tuesday 9am-12noon Social Centre: Tea, Coffee, Bacon sandwiches, village gossip, post office, - fun what more could you want?

Bell Ringers

Our team of bell ringers is looking to train new ringers as part of a national campaign to train ringers to mark the 100th anniversary of the end of World War One. Please contact Ruth (details above) if you are interested.

Pound Lane Free Church

We warmly invite anyone to join us on Sunday morning or evening as we worship together, or a Wednesday evening for prayer and bible study.

Pastor: Mr. Dave Hall (01638 781343 or 01638 780636, email pastor@plfc.org.uk)

Elder: Mr. Matthew Hall

Every Sunday:

Sunday worship: 11.00a.m. & 6.30p.m.

Celebration of the Lord's Supper:

1st Sunday following evening service

3rd Sunday following morning service

A Crèche is available for babies to 7 years during the morning

service.

Refreshments are served after the evening services, except the first Sunday of the month.

Fellowship Lunches are served after the morning service on the third Sunday of the month.

Kingdom Kids (3yrs. - Yr3): 10.00- 11.15a.m.

All Stars (Yr.4 - Yr.6): 10.00 - 11.00a.m.

Covies (Yr.7 - 18yrs.): 10.00 - 11.00a.m.

There is a hearing loop installed and signing for the deaf is available as well as Braille songbooks. We have a comprehensive Child Protection Policy and a CRB check has been carried out on all children's and young people's workers.

Monday:

Music Mayhem: 9.30-10.30a.m. (Preschool children during school term only)

A fun time for your pre-school children - action songs, musical instruments and the ever popular "Sockeroo". Followed by refreshments and a time to relax with friends whilst the children play. New members always welcome.

Wednesday:

Church Night: 7.40p.m. - 9.00p.m.

Bible study, prayer and fellowship. Age from mid-teens upwards.

Thursday:

Coffee Morning: 10.00a.m. - 11.30a.m.

Turn up any time between 10 and 11.30 for

free tea, coffee and cakes. Chat with friends and make new ones.

Open to any age. Includes an 8 minute "in the news this week" slot in the middle.

Friday:

Women's Meeting(Fortnightly):10.30-11.45am

Fellowship Meeting (monthly): 12.00 - 2.00pm For older folks - starts with a meal.

Saturday: **Men's Fellowship (2nd Sat. of month): 8.00am**

Christianity Explored courses are run regularly - please ask for dates of next course

For further information on any of the above or if you would like to speak to Pastor

Dave:

Phone: 01638 781343 (Church Office)

01638 780636

(Pastor's home) Email:

pastor@plfc.org.uk or secretary@plfc.org.uk

Web site: www.plfc.org.uk

& www.isleham.com

Full details of all our services, events, core beliefs and contact details are on our website: <http://plfc.org.uk>

Christmas Services

Three Rivers Group

2nd Dec - Advent Carols
Group Service - Chippenham 6.30pm

9th Dec - Carols - Isleham 4pm
16th Dec - Carols - Kennett 3.30pm
16th Dec - Carols - Fordham 6.30pm
23rd Dec - Carols - Snailwell 6pm

24th Dec Christmas Eve - Crib Service - Isleham 4pm
24th Dec Christmas Eve - Crib Service - Fordham 4pm
24th Dec Christmas Eve - Carols - Chippenham 6pm

24th Dec Christmas Eve - Midnight Mass - Isleham 11.30pm
24th Dec Christmas Eve - Midnight Mass - Fordham - 11.30pm

25th Dec Christmas Day - Eucharist - Isleham 9.30am
25th Dec Christmas Day - Eucharist - Snailwell 9.30am
25th Dec Christmas Day - Eucharist - Fordham 11am
25th Dec Christmas Day - Eucharist - Chippenham 11am

#FollowTheStar

High Street Church

What sort of person are you?
Where were you born?
Who are your friends and acquaintances?
How old are you?

The good news is that whoever you are, you are more than welcome to join us at High Street on a Sunday or at any other time throughout the week. We really are a mixed group of all sorts and we choose to spend time together as we discover more about each other and more about God and His love for us. People come from the village but from lots of other places too (last Sunday we counted thirteen different nationalities at our morning service!) so you would fit right in.

Mid week there are lots of different activities and events taking place including Lunch Club on the second Wednesday of each month. Further Details are available from our Church Office 01638780985.

More good news....Christmas is nearly here and whether you feel exhausted or excited (or both!) , it's coming.

We will be holding special services on Sunday December 23rd @10.30am (Family service) and 6.30pm (Carol service) at High Street, to celebrate the birth of Jesus Christ and we would warmly invite you to join us.

Then on Christmas morning @11am, we will be holding our Celebration service at the new Church on Beck Road, which is very exciting, but you will need an extra layer or two!

(Please also note that if you are going to be alone over Christmas, and you would enjoy a meal with others, feel free to contact us on 01638 780985 or 780652.)

The REALLY good news is that because God sent Jesus, you and I can experience His love and forgiveness and that is certainly something well worth celebrating.

Happy Christmas from all of us at High Street.

Parish Councillors address list

Richard Radcliffe (Chairman)	45 Sun Street, Isleham Tel: 01638 780831
Derrick Beckett (Vice Chairman)	Appleyard Farm, 1 Houghtons Lane, Isleham Tel: 01638 780476
Vanessa Bruyneel-Smith	115 The Causeway, Isleham Tel: 01638 781708
Jeannette Malkin	17 Little London, Isleham Tel: 01638 780283
Bob Mitchell	10 Sparkes Close, Isleham Tel: 01638 780707
Marco Caferelli	22 Maltings lane CB7 5RZ,, Tel: 07971 335193
Clive Patterson	21 West Street, Isleham Tel: 01638 780669
Glenda Preece	94 The Causeway, Isleham Tel: 01638 780734
Brett Turton	5 Beck Road, Isleham Tel: 01638 7803338
Pauline Wilkes	6 Limestone Close, Isleham Tel: 01638 780640
Jeanette Broderick (Temp Parish Clerk)	Parish Office, The Beeches Tel: 01638 781687 Email: islehampc@gmail.com Website: www.isleham-village.co.uk



Isleham Parish Council Update



The Parish Council meets on the first Monday of every month at 7.15pm. Meetings are held in the main meeting room of The Beeches. Members of the public are invited to attend the meetings and 15 minutes are set aside each month for public question time. (No food or drink to be bought into the meeting room, please.)

Full copies of the agendas and minutes are available on the Parish Council website, The Isleham News Facebook page, the notice boards outside The Beeches and adjacent to the cenotaph, and from the Parish Clerk, Jeanette Broderick: tel 01638 781687, email islehampc@gmail.com.

The Parish Council meets on the first Monday of every month in The Beeches at 7.15pm. Members of the public are welcome at these meetings. They have an opportunity to speak if there are any issues they are concerned about.

Due to work commitments, Simon Paveling has stepped down as a member of the Council. Thank you Simon, for all your hard work. We wish you continued success.

There are currently vacancies on the Council for two councillors. Please contact the clerk or one of the serving council members for further details.

The first phase of tarmacking The Beeches car park has now been completed.

Isleham Parish Council would like to congratulate Mark Goldsack on being elected as our new County Councillor. We look forward to welcoming him at our meetings and wish him every success in this role.

We are sorry to report that there have been break ins on our village allotments. Also, there is evidence of anti social behaviour on the recreation ground.

Should anyone be looking for a place to home their ponies, there is a paddock available to rent on Dunstall allotment. Please contact clerk for details.

POS+ABILITY

Reg.Charity Number 1149783

FREE TASTER SESSION

Classes run in Ely, Histon, Littleport and Soham

Pos+Ability run chair-based exercise groups for people living with all kinds of long-term illnesses, including, but not limited to, Strokes, Parkinson's, Neurological Conditions, Multiple Sclerosis and Muscular Dystrophy.

Sessions include:

- ☐ Seated group exercise using a range of equipment whilst working to your own ability.
- ☐ Specially developed wheelchair accessible exercise bike.
- ☐ Use of parallel bars with the support of our team.
- ☐ Various hand exercise pieces of equipment used to strengthen your joints and grip.
- ☐ Personalised exercise programme to suit your individual needs.
- ☐ Fun quizzes, memorabilia books and plenty of opportunity to socialise with others.



We can help you with independence, maintain your levels of mobility, improve your confidence and self esteem,

help with memory and cognitive skills, communication and conversation.

If you think we may be able to help you, please try Our **FREE TASTER SESSION** by getting in touch on 07565 598 193,
Email: posability3@gmail.com,
Web site: www.posability.org

We are positive about YOUR ability

Isleham remembers - 100 years on

The Remembrance service on Sunday 11 November was very well attended with approx. 300+ people at the 2 minutes silence and wreath laying, The Roll of Honour, the names of all those who died in both world wars, were read by Ian Powys, and the Last Post and Reveille were played by Benjamin Edwards.

Wreaths were laid on behalf of Isleham Parish Council, Isleham Women's Institute, the Beavers and Cubs, the Tuesday sewing group, and Isleham School. 204 adults and 64 children attended the service in St. Andrew's Church, which was led by the Reverend Canon Nigel Cooper.

£460 was raised for the Royal British Legion at the service, this doesn't include the hundreds of pounds raised through the selling of poppies in the village.

Thanks to Gill Savage and Pauline Wilkes who are our Poppy Appeal Organisers and all the establishments who had a Royal British Legion collection box in their premises. A special big thanks needs to go to Brian Challis who does a sterling job, rain or shine selling the Poppies door to door and outside the Co-Op.

Photos from Vernon Place



Wednesday 12 December
3:30pm - 5:30pm
The Beeches
Mill Street, Isleham



So much fun...

- 🎄 Face painting
- 🎄 Crafts stalls
- 🎄 Games
- 🎄 Raffle
- 🎄 Sweet treats
- 🎄 Biscuit decorating

And a visit from Father Christmas!

Manufacturers & Suppliers of
Blinds & Awnings

- Free Expert Measuring & Fitting Service
- Specialist Advice from Knowledgeable and Professional Staff
- Only Top Quality Materials & Components
- Well Reputed Local Company



1st FIESTA BLINDS
Studlands Park Avenue, Newmarket CB8 7EA
Telephone: 01638 665010
www.fiestablinds.co.uk

BBSA **VELUX**

- Vertical • Venetian/Wood Slat • Roller • Pleated • Roman
- Velux • Woven Wood • Canopies • Awnings



Green Wood Tree Surgery

Local, Knowledgeable, Competitively Priced

Call us to discuss your tree's health needs on 01353 688098

Tree Felling - Dismantling - Stump Grinding - Crown Reduction - Thinning - Hedge Cutting - Site Clearance - Consultancy - Surveying - Fully Insured - City & Guilds Qualified.

www.greenwoodtreesurgery.co.uk