



Issue 75 • August & September 2016 • www.isleham-village.co.uk

There was rain, but not on our parade



Top: 1st prize High Street Chapel's Noah's Ark;
middle: 2nd prize Preschool's The Royal Family;
bottom: third prize Beaver's Mini Circus



Isleham Gala was yet another roaring success! More than 1700 people turned out to enjoy the spectacle in the sunshine.

The Parade was a very colourful sight with rainbows and circus performers and footballers and even 1950s Pancake Day racers.

Floats were judged and awarded as follows: 1st prize of £100: High Street Church with Noah's Ark; 2nd prize of £75: Isleham Under 5's with The Royal Family and 3rd prize of £50 went to Isleham Beavers with their amazing Mini Circus.

The Fun Run was very popular, with 28 contenders of all ages and abilities running one, two or three 900m laps of the whole recreation ground, around, in and out of all the fun and games. See the results on page 10.

The Classic Car display was very well supported, with more than 30 vehicles. Shining in the sun were some fabulous vintage Minis and camper vans, and a wide variety of other vehicles.

There were fairground games and craft stalls, cakes and sweets, animals and reptiles, the Grand Draw, the Isleham Dog Show and marquees filled with entries for competitions from art and crafts to

Continued on page 15 More photos in centre pages



For all your building requirements...

For every home renovation project, from home extensions, loft and garage conversions, alterations, carpentry, garden walls and patios. As well as, Upvc, fascias, soffits and conservatories.

Call Alex or Glen for a free no obligation estimate on your building project...

01638 781679 or 07909 915 612 / 07833 017588

www.kingbuild.co.uk | info@king-build.co.uk
18 Malting Lane, Isleham, CB7 5RZ

City & Guilds
NPTC
Qualified



01353 882188
info@actreeandgarden.co.uk

Fully Insured Award Winning Local Business available for all Tree Surgery, Hedge Cutting, Planting, Grass Cutting, and Garden Care. Contact us today to arrange your free, no obligation on site quotation

WINNER

ELYSTANDARD
BUSINESS
AWARDS
2014

KARMA FARM www.islehamfen.co.uk

8 Fen Bank, Isleham; Tel: 07900 961217



The Beautiful Eco-Campsite on Isleham Fen



Established family run business

Tree Felling - Dismantling - Removal
Stump Grinding - Stump Removal
Crown Reduction - Thinning
Consultancy & Surveys
Site Clearance - Grounds Maintenance
Hedge Cutting - Qualified & Insured



City & Guilds
NPTC

01638 780188

info@greenwoodtreesurgery.co.uk
www.greenwoodtreesurgery.co.uk



**Car Servicing
& Warranty**

Why trek into Cambridge or Bury?

Visit us, your local Renault garage. We can carry out all of your 4+ service contracts and warranty repairs.

- Established for 50 years, we're now conveniently situated off Studlands Park Ind Estate, Newmarket
- Fully trained Master and Senior Technicians
- Free charging of electrical vehicles whilst the car is in the workshop

Book now 01638 661 113 or email service@manchetts.co.uk

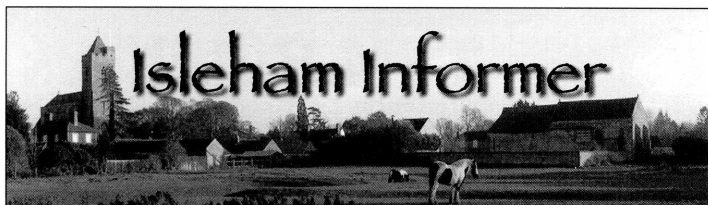
1 Victoria Way, Studlands Park Ind Estate, Newmarket, Suffolk CB8 7SH

www.manchetts.co.uk



MANCHETTS

MANCHETTS
www.manchetts.co.uk Tel: 01638 661113



The *Isleham Informer* is published six times a year, every other month.

CONTACTS • **Editor** Ed Mayall T: 01638 780839 E: ed@islehaminformer.org.uk • **Advertising** Emma Joy-Staines T: 07809244895 E: emmajoystaines@yahoo.co.uk • **Design & layout** Zoë French T: 01638 780007 E: zoefrench3@gmail.com • **Features** Glenda Preece T: 01638 780734 E: gjpreece@aol.com • **Distribution** Fred Preece T: 01638 780734 • **Published by** Isleham Parish Council • **Printed by** Gipping Press www.gippingpress.co.uk
NEXT ISSUE: Published 1st October 2016 (dependent on staffing). The deadline for all editorial and advertising is 9th September 2016.

DISCLAIMER: The *Informer* would like to point out that we have neither tried nor tested all of the products and services advertised in these pages and therefore cannot accept responsibility for the veracity of any claims made.

Useful Information

Mobile Library

1st Thursday of the month:	Arrive	Depart
Church Street	2.15pm	3pm
Mill Street	3.05pm	5pm
3rd Friday of the month: Church St	9.30am	10.10am

Useful phone numbers

Emergency for Police, Fire, Ambulance.....	999
Police (Non-emergency).....	101
Accident & Casualty (Addenbrooke's).....	01223 217118
Addenbrooke's Hospital (Cambridge).....	01223 245151
Newmarket Hospital.....	01638 564000
West Suffolk Hospital (Bury St Edmunds).....	01284 713000
Staploe Medical Centre (Soham)	
- Appointments.....	01353 624121
- Prescriptions & Dispensary.....	01353 727695
- Enquiries, Home Visits, Emergencies.....	01353 624123
Minor Treatment Centre, Ely.....	01353 656675
NHS Direct (for advice).....	0845 4647
GP Out-Of-Hours (non-emergency).....	111
Electricity Emergencies.....	0800 7838838
Gas Emergencies.....	0800 111999
Anglian Water Leaks.....	0800 771881
- 24 hour.....	0845 7145145
Social Services - office hours.....	0345 0455202
- out of hours emergency.....	01733 561370
Refuse Collection.....	01353 665555
RSPCA.....	07599 522716
- Cruelty line.....	0300 1234 999
Citizens Advice Bureau.....	Ely 0845 130 6442
	Mildenhall 01638 712094
	Newmarket 01638 665999

District Councillor: Derrick Beckett.....01638 780476
 Parish Council Clerk: Diane Bayliss.....01638 781687
 MP: Lucy Frazer.....lucy.frazer.mp@parliament.uk

Dates for Your Diary

If there is anything you would like included here for future issues: contact Glenda Preece, T: 01638 780734 E: gjpreece@aol.com.

REGULARS

Tuesdays: Coffee Morning at the Social Centre, 9am-noon

Saturdays & Sundays Brunch at The Beeches 10am-1pm

August

Monday 1st	Parish Council	The Beeches, 7.15pm
Thursday 4th	Mobile Library	Church St. 2.15-3pm
		Mill St. 3.05-5pm
Thursday 11th	W.I. Summer Outing	The Beeches, 7.30pm
Friday 19th	Mobile Library	Church St. 9.30-10.05am
Friday 26th	Quiz Night	The Beeches, 7.30pm

September

Friday 2nd	Mobile Library	Church St. 2.15-3pm
		Mill St. 3.05-5pm
Monday 5th	Parish Council	The Beeches, 7.15pm
Thursday 8th	W.I.	The Beeches, 7.30pm
Friday 9th	INFORMER DEADLINE	

	Bury Octet	The Beeches, 7.30pm
Thursday 15th	Isleham Society Visit to Elgood's	
	Brewery & Gardens	
Friday 16th	Mobile Library	Church St. 9.30-10.05am
Tuesday 20th	Gardeners Club	The Beeches, 7.30pm
Friday 29th	Quiz Night	7.30pm, The Beeches

Village Notes

- **The Dunstall Apprentice Grants** remains at £250. If you are starting an apprenticeship or going to University in the autumn please contact the Clerk to see if you qualify for a grant.
- **Isleham United Youth Football** are starting their new group of Under 5s. If you have a child starting school this September they are welcome to come along. For more details please contact Marco on 07971335193 or Steve on 07545 395573.
- **The Lady Peyton Hospital Almshouse Trust** is looking for volunteers to join the Charity and act as Trustees. We meet twice a year, in March and October, and conduct other matters by email. If you would like to volunteer, or find out more about the Charity, then please contact: Fred Preece, Chairman: tel 01638 780734 or email Fpreece2@aol.com.
- **Invitation to a party - save this date!** The Beeches Entertainers invite you to a Murder Mystery on Saturday 22nd October, buffet supper: limited tickets.
- **The Beeches mailing list:** We at The Beeches would very much like to keep villagers regularly informed of events at The Beeches via our email newsletter. If you would like to receive this please email lousehounsoume@thebeechesisleham •

Volunteer for a better Isleham

We have a shortage of volunteers in the Isleham area.



Shape your community for the better by helping older people live happy, healthy and independent lives. Even with just a few hours a month, we have flexible roles to suit you:

- **Offer practical and emotional help to local people** after an illness or stay in hospital. Help at Home volunteers offer support (usually for 3 weeks) by: collecting prescriptions, shopping, meal deliveries or just having a chat and making sure people are ok. You could also help with one-off tasks such as changing a light bulb or taking curtains down for a wash.
- **Support older people to find services and activities** to help them stay connected with their community. Community Navigators volunteers find information about anything from social activities to services that help people stay independent at home, e.g. gardeners and cleaners.
- **Get involved with a local community group** by working with the Community Development team to meet a particular need? You could start or get involved in anything from car schemes to lunch clubs and singing groups. You could make a big difference!

Contact us now on: 01954 211919 to find out more, or www.care-network.org.uk. Email: volunteering@care-network.org.uk. Thank you!

WWW.CSPSERVICES.CO.UK

Computer/laptop repairs, upgrades & new builds, virus & spyware removal plus data recovery.

Printer cartridges at good prices.

Telephone points, routers & networks installed & set up.

Spare monitors, keyboards, mice & printer available for short term loan when yours goes wrong.

Watch batteries fitted.

Transfer 35mm slides to computer.

Contact us:

Tel: 01638 780669 Mob: 07771 830336

Email: enquiries@cspservices.co.uk or patterson.clive@gmail.com

Website: www.cspservices.co.uk or via www.islehamwest.co.uk

Christian Weston
The Clean Sweep

Institute of Chimney Sweeps
 trained and approved

Swift, thorough, clean service

Safety certificates issued

Fully insured

- Tel: 01353 699831
- Mobile 07505001559



AMS Building and Landscaping Ltd

Our areas of expertise include:

- Driveways and paving
- Driveway cleaning and sealing
- Patios and paths
- Fencing, trellis work and decking
- Turfing and seeding
- Garden design
- All building work
- Property maintenance
- Garden and property clearance

Call for FREE estimates and bookings:

Office: 01638 721893 or Site: 07789261266

Please visit our website for examples of our work & refs:

www.amsbuildingandlandscaping.co.uk



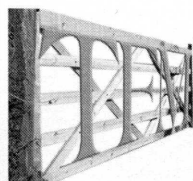
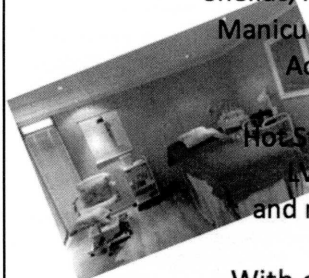
Emma's Beauty Co

Offering a wide range of luxury nail, beauty
 and holistic treatments since 2007

Dermalogica Facials
 St Tropez Tanning
 Shellac, Minx and Vinylux
 Manicures & Pedicures
 Acrylic Nails
 Waxing
 Hot Stone Massage
 LVL Lash lift
 and much more!!

With our therapists
 Emma and Rachel

07843665928
emmasbeauty20@gmail.com
 Situated in West Row



TFM Butchers

Fenrose Farm, 1 Fen Bank, Isleham CB7 5SL

Tel: 01638 780994/780431

Email: info@thompsonsfarmisleham.co.uk

Website: thompsonsfarmisleham.co.uk

Due to popular and growing demand of our
 FRESH HOME-BRED AND REARED BEEF & PORK
 (lamb from July/August and chicken from June) our butcher
 David works in our farm shop during our opening hours:

Tuesdays 10am-5.30pm • **Thursdays** 9am-5.30pm

Fridays 9am-5.30pm.

At the weekends we are open:

Saturdays 9am-4pm • **Sundays** 10am-12 noon.

We guarantee 100% traceability and very competitive prices
 for our customers! View our prices on our website.

An example of a TFM Best Buy Pack ONLY £25!

2 pork steaks, 1lb diced pork, 1lb hand-made chipolatas,
 1lb lean beef mince, 2 gammon steaks, 6 eggs



A new pack will be available each month –
 see Roseanna Thompson on Facebook for details.

Buy British Buy local Buy from the farm gate

FOREVER



Do you know anyone who suffers from?

hiatus hernia

allergies

sinusitis

osteoarthritis

stomach ulcers

cystitis

chronic fatigue

psoriasis

IBS

asthma

Crohn's disease

sciatica

arthritis

ME

diverticulitis

eczema

dermatitis

cold sores

acne

colitis

osteoporosis

Our products could help! Ask us how

Emma and Leigh Joy-Staines
 07809244895

Emmajoystaines@yahoo.co.uk

School pantomime *Aladdin Trouble* soaraway success

Report by Anna Palmer, Year 6, Isleham Primary School

Apanto like no other was performed by Isleham Primary Year 6 in June. It was called 'Aladdin Trouble'. The children performed mind-blowing acting as a treat after a year of hard labour due to SATs. With the main parts being taken by Alex, playing Aladdin, Sophie as Jasmine and Anna as Scheherazade the narrator, Adam as Widow Twanky and Owen as Abanazar, the play began with a song 'In the Market Place'. My parents have said 'It was so good we had to watch it twice', and many audience members said it was the best so far! Furthermore the atmosphere had a warm fuzzy feeling with action and drama. 'Aladdin Trouble' has been the best drama experience for many of my class members, resulting in us being much closer as a group, and much happier together. I hope you have enjoyed hearing about the performance as much as I have loved performing it.

Anna Palmer

Thanks were given to Mrs Doreen Speirs, Mrs Sassoli, Mrs Gilbert for the music, and Mrs Freestone for the set and costume changes.

• If you would like your club, society, organisation's news and photos, or anything you (and the *Informer* team) think is of interest to the village to appear in the *Isleham Informer*, please contact any member of *Informer* staff - see page 3 for contact details. Please supply your article and photos by September 9th for our October issue (but we may be able to accommodate copy after that date, do check with Zoë). We also need the photographer's name where necessary and details of photos for captions: please do ask subjects to give their permission to appear in the *Informer* - children should have parents' permission.

the **WI**
INSPIRING WOMEN

Isleham WI

In June we had our summer outing, when we visited Impington Gardens and Mill. This is an acre and a half area that was bought in 1999 by Steve and Pippa Temple. When they took it over, the garden was dilapidated with almost all the trees overgrown by ivy and the borders taken over by brambles, bindweed and self-sown sycamores, and only pigeons in residence. In the first year, many friends helped with 'slash and burn' parties, and as they removed the ivy, so the white blossom of East Anglia emerged, and birds began to return. In the second year, they cut a wandering 'secret' path round the edges and began to replant areas with more worthwhile shrubs and plants, whilst maintaining the romance. They have kept the white theme, adding sloes, hawthorns, white roses, pale daffodils and splitting and extending snowdrops. They have planted more than 28,000 bulbs, and 28 trees. Steve has restored the mill, and in 2007 new sails were fitted and in 2009 the restoration of the outside was completed. It was a lovely evening, and after the visit we had a meal in a local pub.

In July we had an Open Evening, and welcomed a number of guests who enjoyed a Flower Demonstration by Sandra Jaina from Newmarket.

If you would like to join the W.I. or simply come to a meeting to see what it is like, please do come along. We meet on the second Thursday of each month in the Beeches, 7.30pm for 7.45pm, and new members are always welcome. For further information contact: Glenda Preece 01638 780734 gjprece@aol.com •

Village clubs: information

CLUB	CONTACT	DAY/DATE	TIME	PLACE
1st Isleham Beavers (boys & girls 6-8 yrs)	Sue Harrison 781837	Tuesday	5.15-6.15pm	The Beeches
1st Isleham Cubs (boys & girls 8-10 yrs)	"	Tuesday	6.30-8pm	The Beeches
1st Isleham Scouts (boys & girls 10-14 yrs)	"	Tuesday	6.30-8pm	The Beeches
Angling Society	Ivan Houghton 01638 780333			
Ballet & Dance	Lisa Nixon 07512 717758	Tuesday	from 3.30pm	The Beeches
Ballroom Dancing	Cynthia George 01954 202095	Friday	7pm	The Beeches
Board Games	Alison Young 01638 780351	Last Thursday	2-5pm	High St. Church
Book Club	Doreen Spiers 01638 780783	2nd Friday	2pm	The Beeches
Bowls Club	Terry Pinder 01638 720875			
Bridge Classes	Barry Lowe 01353 658358	Wednesday	10am-noon	The Beeches
Brownies	Bridget Clements 01353 624103	Thursday	6-7.15pm	High St. Church
Busy Bees	Pre-School 01638 781212	Wednesday	9.30-11.30am	The Beeches
Craft Club	Hazel Thompson 01638 780633	Tuesday	1.30-4pm	Limestone Centre
Gala Committee	Margaret Davies 01638 781175	3rd Monday	7.30pm	The Beeches
Isleham Gardeners	Alison Moughton 07894 473977	3rd Tuesday	7.30pm	The Beeches
Isleham Society	Vernon Place 01638 780449	3rd Thursday	7.45pm	The Beeches
Isleham United Youth FC	Steve Isaacson 07545 395573			
New Age Kurling	Lisa Milne 01638 780186	Friday	2-3.30pm	The Beeches
Pilates	Jo Simcock-Simms 07974 653775	Monday	7-8pm, 8-9pm Wednesday 12 noon	The Beeches
Tania Fitness	Tania McQuilkin 07983 440187 Powerhoops & kettlebells	Tuesday	9.30-11am	The Beeches
WI	Glenda Preece 01638 780734	2nd Thursday	7.30pm	The Beeches

Pooley Bendall Watson

SOLICITORS

For a friendly and professional approach

- Domestic & Commercial Property
- Family & Matrimonial Matters
- Wills, Probate, Trusts & Tax
- Company & Employment Law

2 Three Cups Walk, Fore Hill, Ely Cambs CB7 4AN
Tel: (01353) 666075 Fax: (01353) 666162
Email: info@pbw.uk.com

Also at: 4b Church Street, Isleham, Cambs CB7 5RX
Tel: (01638) 780170 Fax: (01638) 780190

P B & W Solicitors LLP is a Limited Liability Partnership, trading as
Pooley Bendall & Watson Solicitors.



DRAIN-PLUMB

Plumbing, Heating & Drain Services

BLOCKED DRAINS CLEARED

- Gas Boiler Service & Maintenance
- Power Flushing to Heating Systems
- Home Buyers' CCTV Drain and Plumbing Surveys
- All Plumbing & Heating Repairs and Alterations
- All Work Guaranteed

TEL: 01638 742873
MOBILE: 07932 773515
7 Ness Road, Burwell
Cambridge, CB25 0AA



NICEIC PART P APPROVED ELECTRICAL CONTRACTORS

Avocet Electrical Technology are electrical contractors working throughout Cambridgeshire, Suffolk and across East Anglia.

We cover electrical projects for the commercial, industrial and agricultural sectors and are NICEIC Part P Registered for domestic projects.

Our expertise includes:

- Bespoke LED lighting design, supply and installation
- Installation of single and three phase systems
- Maintenance and repair of agricultural, commercial, industrial and domestic installations
- Low energy lighting consultation
- Inspection and testing
- Fire alarm design and installations
- Home automation

Please do not hesitate to contact us with any query.



T: 01638 780033 M: 07800 832619
E: info@avocet-electrical.co.uk W: avocet-electrical.co.uk

Avocet Electrical Technology 43 The Causeway Isleham Cambridgeshire CB7 5TA

LANGTRY FITTED FURNITURE

L
F
F

EXTENSIVE RANGE OF KITCHENS AND BEDROOMS



BESPOKE & HANDMADE FURNITURE

SHOWROOM OPENING HOURS:

7am to 5.30pm Mon - Fri
9.30am - 4.30pm Sat

Unit 24, Northfield Business Park,
Soham, Ely, Cambs. CB7 5UE
(Behind Scampers)

Tel: 01353 725380

Fax: 01353 725384

Out of hours phone:

Tony on 07738559569

- From Design to Completion
- Supply & Fit or supply only
- Top Brand White Goods
- Bespoke Sizes to fit any Kitchen & any budget
- Free Design service

www.langtryfurniture.co.uk

Isleham Society

In May we welcomed Richard Fletcher, from the New Horseracing Museum in Newmarket, who gave us an illustrated talk about the history of horse racing in the area, and information about the new facilities the museum will offer, including an art gallery that will cover all sports. The Stables of Palace House will be turned over to the science and genetics of horses, and will include a farrier and a cafe, amongst other attractions. To complete the facility there will be a four acre paddock where the public will be able to view the horses as they exercise.

At the beginning of June a number of our members enjoyed an accompanied walk at Chippenham Fen, guided by a knowledgeable and informative warden. Then later in the month we had a very enjoyable visit to Bressingham Steam and Gardens. The 17 acre garden was beautiful; so well designed and tended, and there were many other delights; the Gallopers, steam engine rides, and the Dad's Army museum. The sun shone, and we all enjoyed a lovely day.

We do not meet in August, but the programme for the rest of 2016 is as follows:

September - a visit to Ellgood's Brewery and Gardens

October - Sarah Lowther will give an illustrated talk on *Guide Dogs for the Blind*.

November - Dr. Chris Foulds *Salad and Veg from East Anglia*.

We meet at 7.30pm on the third Thursday of the month in the main hall at The Beeches. Visitors are always welcome •

Archaeology in Isleham

Suffolk Archaeology CIC are holding an Open Day on Saturday 22nd October, 10am - 4pm at The Beeches Community Centre. Our recent excavation at Isleham revealed a multiphase site dating back to the Romano-British period that continued right through to the early medieval. Agriculture appears to have been the primary function of the settlement with a series of field boundaries that have been re-used over the centuries for enclosing fields and penning animals.

Come along to the Open Day to meet the archaeologists and discover what was found. A display detailing the excavation including some of the finds will also be on show •



SUFFOLK
ARCHAEOLOGY
• A HISTORY OF EXPERTISE •

Topping & Company • Booksellers of Ely

ELY AUTUMN LITERARY FESTIVAL

THE HAIRY BIKERS with *Chicken & Egg*

7.30pm Tuesday 6th September, 7.30pm at Ely Cathedral

BEN MACINTYRE with *SAS: Rogue Heroes*

7.30pm Monday 26th September, 7.30pm at Ely Cathedral

MARGARET ATWOOD with *Hagseed*

7.30pm Wednesday 12th October, 7.30pm at Ely Cathedral

ANDREW TAYLOR

with *Ashes of London*

7.30pm Mon 5th Sept, Ely Library

ANNE SEBBA with *Les Parisiennes*

7.30pm Thur 8th Sept, at Ely Library

MIDGE GILLIES with *Army Wives*

7.30pm Thur 15th Sept, St. Peter's Church

SUPPER WITH DIANA HENRY

for *Simple*

7.30pm Fri 16 Sept, The Countess of Huntingdon Free Church

COLIN THUBRON

with *Night of Fire*

7.30pm Mon 19 Sept, St. Peter's Church

JESSIE BURTON with *The Muse*

7.30pm Wed 21st Sept, Ely Library

JIM KELLY with *Death Ship*

7.30pm Thur 22 Sept, St. Peter's Church

VICTORIA HISLOP

with *Cartes Postales*

7.30pm Tue 27th Sept, St. Peter's Church

PHILIP BALL

with *The Water Kingdom*

7.30pm Wed 28 Sept, St. Peter's Church

ARTEMIS COOPER

with *Elizabeth Jane Howard*

7.30pm Thur 29 Sept, St. Peter's Church

ADRIAN TINNISWOOD

with *The Long Weekend*

7.30pm Fri 30 Sept, St. Peter's Church

RICHARD COLES

with *Bringing in the Sheaves*

7.30pm Tues 27 Sept, St. Mary's Church

Tickets available from The Bookshop, 9 High Street, Ely
Tel: 01353 645005 and online at toppingbooks.co.uk



ESACT TRANSPORT

If you live in Aldreth, Fordham, Haddenham, Isleham, Little Thetford, Soham, Stretham, Upware, Wicken, Wilburton, did you know that you could have access to a FIVE day a week Dial-a-Ride transport service that picks you up from your door?

Membership with us costs just £10 per year and transport is half the fare with your Bus Pass.

We travel into towns for shopping, doctors surgeries, hospitals and we also provide monthly trips to St Ives, Cambridge, St Neots, Huntingdon and offer day trips and lunch outings.

Join us straightaway to start enjoying this transport.

ESACT
ELY & SOHAM ASSOCIATION FOR COMMUNITY TRANSPORT

01353 661161

HALF THE FARE
WITH YOUR BUS
PASS

MEMBERSHIP
ONLY £10 FOR
THE YEAR

DOOR-TO-DOOR
TRANSPORT

FIVE DAY A WEEK
DIAL-A-RIDE

CALL US TODAY!
01353 661161

ESCAT TRANSPORT
5 Martin Avenue
March
Cambridgeshire

01353 661161

www.escat-cambs.co.uk

Obituary: Brigadier Bill Deller OBE

By Ian Powys

BRIGADIER W. C. DELLER - Bill was the first person Beryl and I met when we came to Isleham. I never met him in Korea, when our Regiments were in the line together in 1952. He was a 'Suffolk' posted to the Royal Norfolk Regiment and often visited our Battalion HQ. I was but a platoon commander in The Welsh Regiment - seldom seen around HQ - but I had kept in touch with a Suffolk's officer when we were attached to the French army in IndoChina. It was he, who when hearing of our move to Isleham, gave me Bill's name and phone number. We have been friends ever since. We, in Isleham, gained glimpses of his illustrious military career: commissioned at Sandhurst in 1946, Bill was plunged into the maelstrom of Palestine, with Jewish refugees arriving from Europe; internal security and aid to the civil power is never an easy task for the armed forces. He was one of the last to leave Jerusalem, taking with him the last Union Jack to fly over the city.

After service in Korea he went to Malaya in 1952, then to Trieste and was promoted to Battalion Adjutant in 1954. He then served with the Aden Protectorate Levies. He returned to the newly-formed 1st East Anglian Regiment in 1963. For the next seven years Bill interspersed postings with the Regiment with staff jobs, and was awarded the O.B.E in 1971. In 1978, promoted to Colonel, he became Defence Attaché to our Embassy in Washington. In 1980 he was promoted to Brigadier and became Defence Advisor to Pakistan.

Officially, Bill was on the 'retired list' from 1982, but returned in 1985 to help commemorate three hundred years of his beloved Suffolks. He realised that the legacy of a regiment, once 'amalgamated' into a new unit, could depend on a few old books and photographs. As President of the Old Comrades Association he urged the Imperial War Museum to record everything old soldiers could recall of their time with the colours. There are today more than 300 hours of personal testimonies in the I.W.M sound archives. He delivered the 'Kohima Epitaph' at the Menin Gate in Ypres in 2013 and was due to accompany another battlefield tour to Holland later this year.

His work in the village included both the Isleham Society and the Peyton Trust. He invited Beryl and myself to a couple of 'Minden Day' commemorations at Bury St Edmunds, events that I can now attend personally, as amalgamations of my old regiment with another 'Minden' regiment have earned me the right to wear the red and yellow roses in my cap. I only wish that Bill could be there too. He is sadly missed. *Ian Powys*



READ ALL ABOUT IT

Isleham Newspapers are up and running!

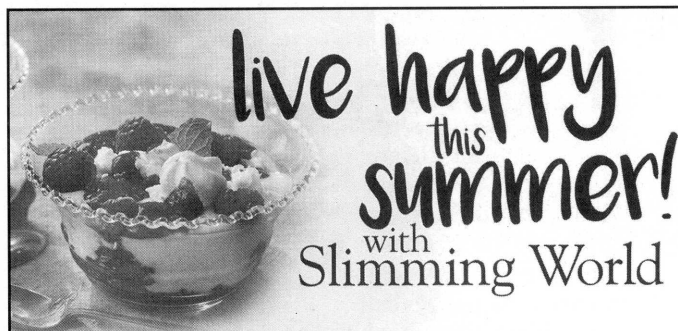
We need the business from past, present and future customers to support this new local initiative by the St Andrews Social Centre.

If you buy newspapers why not get them from us - we are your people. If you're not sure - try us! We give a good service for a very small charge.

If you are a past customer why not rekindle the joy of a daily* newspaper delivered to your door!

Telephone Les Wightman on 01638 781022 or drop a note into 3 Sun Street.

*Newspapers can be delivered daily, weekly or on the days of your choice.



MONDAY: SOHAM

Soham Comrades Club

Market Street 9.30am, 5.30pm and 7.30pm

Tel Sarah: 07877 452954

WEDNESDAY: SOHAM

Ross Peers Sports Centre, College Close

from 27th July to 31st August

The Weatheralls Primary School,

Pratt Street VB

from 7th September onwards

5.30pm and 7.30pm

Tel Amanda on 07563 544708

Guinea Fowl Eggs

12 Great Fen Road
Soham
Ely Cambs
CB75UQ

Fresh at the farm gate
Weekly orders welcome
Hatching eggs available on request

Call Lee on

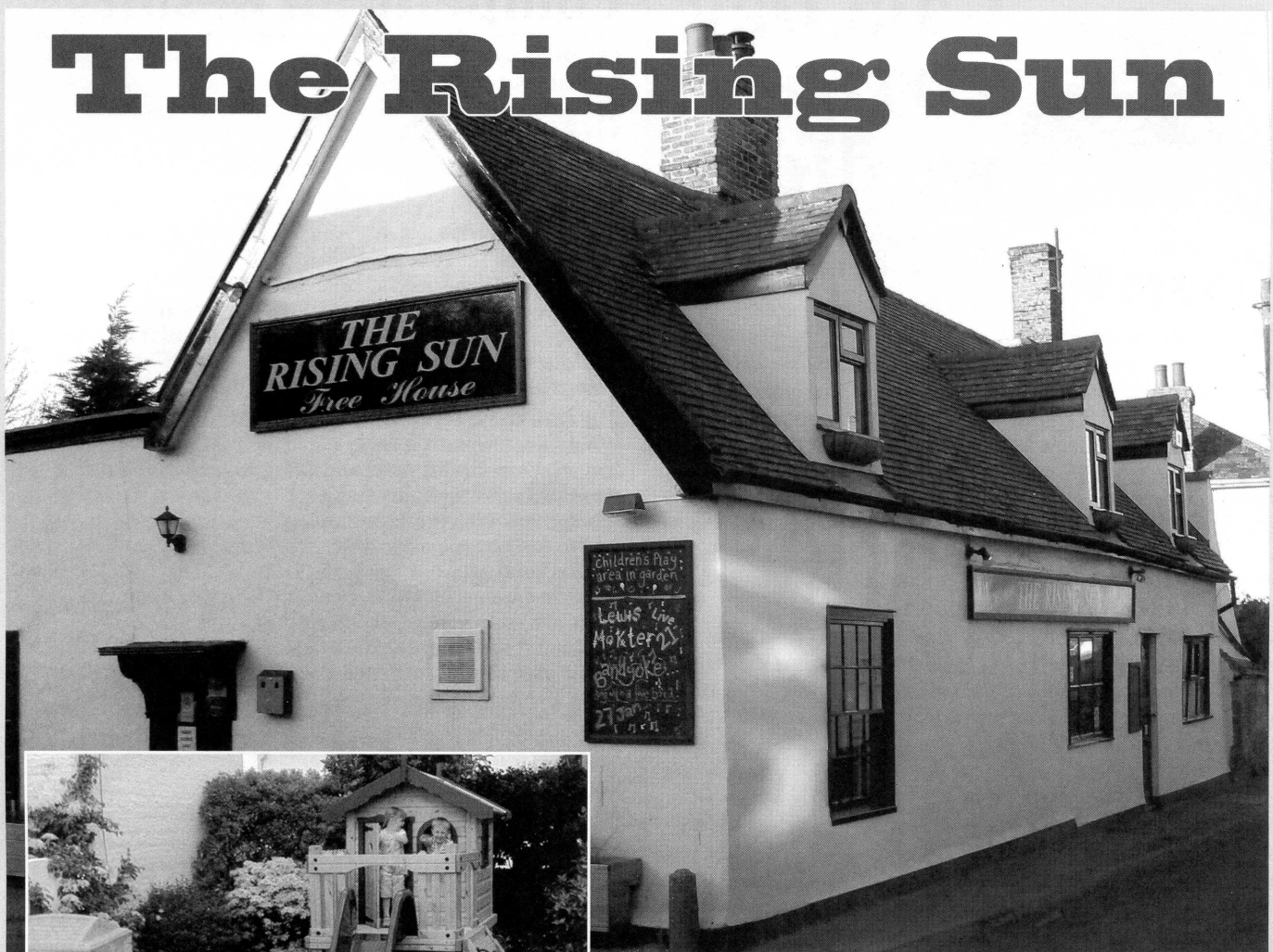
07552430263

slimmingworld.co.uk

f t 0344 897 8000

Slimming
WORLD
touching hearts, changing lives

The Rising Sun



Sun Street, Isleham.
Tel: 01638 780471

OPENING TIMES

Monday: 7pm to Close

Tuesday to Thursday:

12 noon to 3pm, 7pm to Close

Friday, Saturday: 12 noon to Close

Sunday: 12 noon to 10.30pm

FOOD SERVED

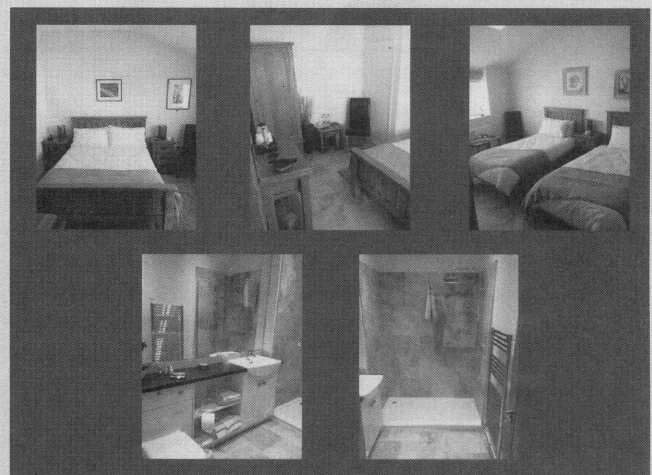
Friday 12 noon to 2pm and 7pm to 9pm

Saturday 12 noon to 9pm

Sunday 12 noon to 2pm

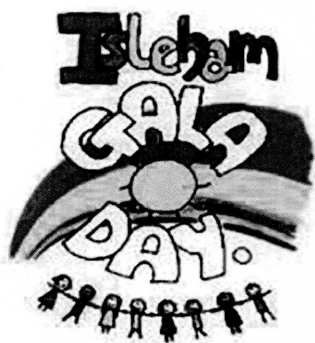
CHECK BLACKBOARD FOR BANDS AND DISCOS

Brand New B&B at The Rising Sun



**2 newly renovated and
refurbished rooms available
now for B&B at excellent rates**

**For further details please see
our brand new Website at
www.risingsunisleham.co.uk**



Gala Day 2016 ~ we did it!

Report by Margaret
Davies - Chair of Isleham
Sports & Gala Committee

You may remember that at the beginning of the year Isleham Gala Day was seriously threatened because we did not have enough people. Committee Members had reduced to four. Via *The Informer* and other means we appealed for help and by the end of February our numbers had increased to 10: enough people to go ahead and start planning the Gala. On the day of course we were joined by many, many more volunteers who worked tirelessly to get everything set up and ready for everyone to enjoy the day. The wind was a nuisance but at least the weather was fine, apart from one heavy shower in the afternoon. It would be almost impossible to thank everyone involved by name, suffice to say that we had enormous help from many sources; the loan and setting up of the PA system was nothing short of amazing, and of course the loan of the generator to power it; the decoration of the field which created a festival atmosphere and so much more, including a very generous donation of £500 from one local company. The parade was bigger than in recent years - the effort that goes in to making and decoarting the floats, be they motorised or just walking, is appreciated by the whole village. Thank you to everyone who turned out to watch and throw pennies into buckets carried by the various groups. We want to say a huge thank you to all the people who helped and participated in any way whatsoever with our Gala Day this year.

If you enjoyed it this year, why not get involved next year? Our AGM in October will be well advertised, as will the first Planning Meeting in January 2017, and you will be warmly welcomed at either or both •

The Best In Show Rose Bowl

By Margaret Davies

One afternoon some time ago I was given the name and number of a lady who wanted to speak to someone regarding something she would like to do for the Gala. I phoned the lady, Annette, who explained that she was the daughter of Frank Cochran of Isleham: she told me the following story. Frank had been a veterinarian who lived in Dullingham Road, a place he had not liked much. After the death of his wife, he looked for somewhere to live where he felt he could be happy and part of the community. Almost 20 years ago Frank found himself on the Recreation Ground in Isleham - on Gala Day. He was so warmly welcomed and found people living here so friendly, that he decided he had found his utopia that very afternoon! He eventually bought a bungalow in Beech Close.

His neighbours encouraged Frank to enter the Gala Day Competitions; he didn't, but unbeknown to him one year a neighbour took one of his roses and entered it. His rose won first prize! Annette and her brother Robert decided that because Gala Day and Isleham had been so important to their father they would like to donate a trophy in his memory, to be awarded every year. Because of his passion for roses the trophy is an engraved Rose Bowl. However, Frank's family have said that the Bowl does not necessarily have to be awarded specifically for roses; it may be awarded, for example, for Best Effort or Best in Show.

This year Frank's Memorial Rose Bowl was presented to Helen Palmer for her winning rose •

Competition Results

PRODUCE

3 potatoes 1st Clive Hall; 2nd C. Taylor
3 broad beans 1st R Graham; 2nd Clive Hall
3 peas in pods 1st R Graham; 2nd Clive Hall
3 carrots 1st Clive Hall. **3 beetroot** 1st Clive Hall; 2nd T. Weston; 3rd R Graham
3 spring onions 1st Clive Hall
3 sticks rhubarb 1st Neil Dyson; 2nd Clive Hall; 3rd Mel Podd
3 courgettes 1st Tony Keating
Container of produce 1st Clive Hall
6 gooseberries 1st N Dyson; 2nd C Hall; 3rd Florence Hawes
Bowl of soft fruit 1st C Maxfield; 2nd C Hall; 3rd H Crawford
Misc. veg included at judges discretion
Best in Show judged by Tony Weston - Six eggs: Imogen Leeson

THE GREAT ISLEHAM BAKE-OFF

Wholemeal bread 1st Emily Radcliffe
Loaf of white bread 1st R. Radcliffe 2nd Kathy Carver
Six white rolls 1st Kathy Carver
Wholemeal rolls 1st Kathy Carver
Any bread not specified 1st Lottie White
Devil's Food cake 1st Bev Johnson; 2nd O Finlay; 3rd G Preece
Victoria sponge 1st Mel Brown; 2nd Graham Carver
Fruit pie 1st Bev Johnson; 2nd Kathy Carver
Scones 1st J. Malkin; 2nd Kathy Carver
White shortbread 1st S Taylor; 2nd B Johnson; 3rd Kirsten & Jacqui

JAMS, PICKLES & CHUTNEYS

Jam Ann Ford
Tomato chutney 1st Lottie Timms; 2nd Xavin Taylor

FLORAL CATEGORY

An arrangement depicting The Spirit of Isleham 1st Janine Taylor
Best in Show Marjorie Radcliffe
Vase or bowl of fresh garden flowers 1st Glenda Preece; 2nd Kathy Carver; 3rd Eve Graham
Vase of mixed herbs 1st Glenda Preece; 2nd Fiona Jones; 3rd P. Dorey
3 or 5 stems of sweet peas 1st R. Graham; 2nd Adam Leeson; 3rd Kathy Carver
3 or 5 pansies 1st Sheila Taylor
Single rose 1st Kirsten Carver 2nd Kathy Carver
3 or 5 roses 1st Jane Brown; 2nd Eve Graham
The Rose Bowl for Best in Show Helen Palmer for a single rose

GALA CRAFT COMPETITIONS

A quilted item 1st Emily Radcliffe; 2nd Sue Tyler; 3rd Hazel Thompson (& Best in Show)
An item in yarn 1st Claire Tombs; 2nd Kathy Carver
Tapestry, embroidery or cross-stitch item 1st Helen Sidebottom; 2nd Alistair Carver
Painting 1st Megan Forder; 2nd Florence Hawes; 3rd Jeanette Moser
A drawing 1st Claire Tombs; 2nd Megan Forder; 3rd Adam Rust
An item in wood 1st Alyson Rust; 2nd Mick Burton
Modelled clay 1st Ella Varma; 2nd Graham Carver
Photographic art 1st Florence & Stanley; 2nd Eve Hawes
Handmade jewellery 1st Louise Webber; 2nd Alyson Rust
Papercraft item 1st David Albery-King
Feltwork 1st Donna Carpenter; 2nd Claire Tombs; 3rd Louise Webber

CHILDRENS COMPETITIONS

Garden on a plate 1st Anna Palmer
Flower in hand- decorated container 1st Leia Taylor
3 decorated cup cakes 1st Isobella MF
Potato hedgehog 1st Leia Taylor; 2nd Millie Crawford
Pasta on a plate 1st Millie Crawford
Crown for the Queens 90th birthday 1st Millie Crawford
Pre-school Art Competition 'The Queen's Birthday Party': 1st Elsa Webber, age 4; 2nd Maizie Wales, age 4, and Beth Salim, age 4; 3rd Charlotte King, age 3 and Evelyn Bye, age 3.
Skittles Winner Wesley, a regular camper at Karma Farm Eco-Campsite, scored 20 points and took the £30 prize.
Grand Draw Winner Ms Jones who won the £50 first prize donated by C.J. Murfitts
Running Races Girls Under 16s: 1st Shauna Pilmer. Girls Under 11s: Mya Davies. Boys Under 11s: Joe Dunbavin. **Fun Run** Girls, Under 16s: Lucy Malkin. Boys Under 16s: Ashley Ward. Boys Under 12s: Jack Palmer. Women Over 21s: Zoë French. Women Over 50s: Alison Earl •

Isleham United Youth Football report



Isleham United Youth FC hosted their football presentation day for their 250 players in July. The sunshine was much appreciated and what a great turnout we had! The club now has teams for Under 5s Football for Fun, Under 6s, 7s, 8s, 9s, 10s, 11s, 12s, 13s, 14s, 15s, 16s Boys, 13s Girls, and Ladies. A free barbecue was followed by the Award Ceremony during which every players received a trophy. Trophies were also awarded to Player's Player of the Year, Most Improved Player and Managers' Players of the Year, for each of the teams that play League football. This was also the last season at the Club for our Under 16s, some of whom have been with the Club since they were Under 7s! We wish you well in the future; you are a credit to the Club. Special thanks to Daniel James their manager!

Isleham United Youth FC would also like to thank all parents, coaches and players for all your support this season. Enjoy your summer - see you all again when the season kicks off in September! •

Above right Isleham youth player Connor Stanley, who moved on to Cambridge City Under 14s and played against Liverpool FC Academy last week, pictured with his father Gerald and Liverpool star Jamie Carragher,

Isleham United Youth FC is one of the largest and most successful football clubs in Cambridgeshire. We run football teams for boys and girls from the ages of 5 to 16 years old. The facilities that the club have at Isleham Recreation Ground and The Beeches Community Centre are second to none, and are the envy of all the teams that visit! All our coaches are qualified to at least FA Level 1, with some going on to the higher levels.

We are always on the lookout for new players at all ages, boys or girls. And if you are an adult who harbours ambitions of being the next José Mourinho we are also looking for new coaches...

If you are interested in becoming part of this fantastic club please contact Steve Isaacson, our Club Secretary, on 07545 395573.

Robert Blair, Isleham United Youth FC

Below The Isleham U9s boys won the Histon & Isleham tournament - it was a very successful season for the team, only losing one League game, and one Cup game in the quarter final. They also played in five other tournaments, reaching one semi-final and winning two cups.





1. The Glenmoriston Pipe Band leading the parade from East End to the Recreation Ground, past Walter Gunston's flagged and bunting-ed house
2. Girls Under 16 Fun Run: a flying start
3. Roy & Janet Clark with granddaughter and 1959 Alvis TD21 Drophead coupe, in Midnight Blue.
4. Women's (& Gender Unspecific) Institute Pancake Day Race walking float
5. Winners of some of the many marquee competitions



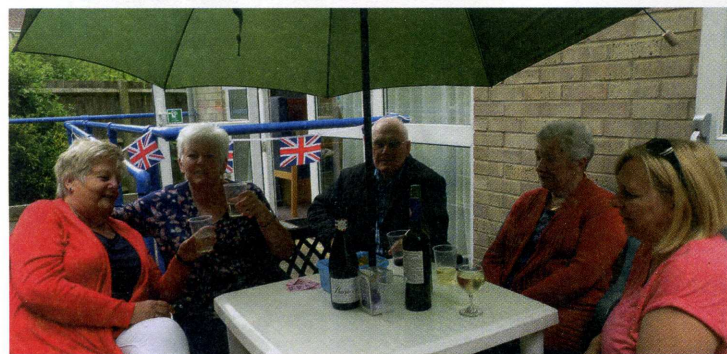


6. Dog Show winners: Mick Burton with Benson and Katie Piggott with Farala
7. Boys Under 11s Fun Runners burning rubber on the first bend
8. Livvy French, second place in the Girls Under 8s Fun Run •





Limestone Close celebrates the Queen's 90th Birthday



Bowls Club Report

We have now passed the mid-point of the season and the evenings are starting to draw in. It has hardly been summer weather to write home about but at least we haven't got wet on too many occasions. The teams have performed very well in their respective divisions. In the Ely & District leagues, the men are currently situated in second place, a vast improvement over recent seasons and the ladies lie just behind the leaders. The afternoon league (which mainly caters for the 'retired' members of our club) are having a mixed season, winning some and losing some and they are currently sitting in mid table of Division 2. In the Cambridge & District league we are still playing in Division 3 but have had a very good season. Having played 11 out of 20 matches we are clear at the top of the table but realise a lot of points are still at stake so will not be able to relax too much.

The club hosts bingo evenings every Wednesday evening (play for cash prizes) to help sustain funds and anyone is welcome to attend. Either go up to the Club on a Wednesday at 7.30pm or contact Doreen on 01638 780836. Also please remember, we are always keen to see new people visit the club, so why not pop up to see what we are about and have to offer.

Barry Grimwood, Club Captain

Continued from front page:

bakery and produce (see Competition Results on page 10.)

Overall the day was a great success and the Gala Committee would like to thank everyone who worked so hard in the months and weeks leading up to the day to organise everything, and all the volunteers who turned up from early morning to late afternoon setting up and clearing away. Special thanks to Walter Gunston who single-handedly put up a marvellous display of bunting and flags on and all around the Recreation Ground •

The Beeches thoroughly enjoyed another successful Gala Day, with teas in the hall and both bars busy from start to finish. It is heartwarming to see all ages enjoying all the events taking place on the field, and with the sun shining once again for our village's main event. The Beeches Gala Disco was also very well supported this year with many children, parents and grandparents staying on after the Gala or returning in their glad-rags after freshening up, for an evening of entertainment to round off the day's events.

We at The Beeches would like to thank the Gala Committee and all who attended or helped in any way shape or form for the continued support in making Gala Day such a superb family event.

Louise Quinn, The Beeches Manager

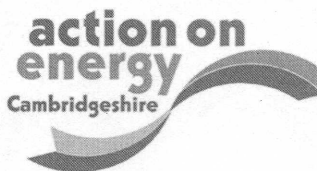
ENERGY EFFICIENCY GRANTS FOR LOW INCOME HOUSEHOLDS

If you are in a low income household or receive certain means tested benefits you may be eligible for an energy efficiency grant to pay for the following:

- Cavity wall insulation
- Loft insulation
- Solid Wall Insulation
- First time central heating

Grants are available for homeowners, and landlords with low income tenants. Grant funding is limited and first come first served.

For more information call and ask to speak to the Energy Officer on: 01353 665555 or email: energy@eastcambs.gov.uk



P.J.Carrington Gas Heating and Plumbing Services

Servicing and Installation
Domestic Natural Gas L.P.G.
Boilers and Appliances
Part 'L' Heating Efficiency
Gas Fires
Underfloor Heating

Bathrooms, Wet Rooms
Kitchens
Fully Certified
Fully Insured
Landlords Certification
No Job Too Small!

Mobile Park Homes, Leisure Vehicles, Boats
Unvented Domestic Hot Water Systems
Oil fired boiler service and repair

T: 01638 781790

M: 07533 172539

E: carringtonpj@live.com

W: www.pjcarringtonheatingandplumbing.co.uk



**68 Isleham Marina
Fen Bank
Isleham
Cambs CB7 5SL**

CHIPPENHAM WI are holding their

CRAFT FAIR

in CHIPPENHAM

VILLAGE HALL

on SATURDAY

29th OCTOBER

10am till 4pm.

Do you have Crafts you would like to sell?
£10 a table.

Call Liz on 01638 724914



Andrew I Myson

Property Maintenance

24 Hall Barn Road, Isleham

Ely, Cambs, CB7 5QZ

TEL: 01638 780680

MOB: 07775673480

a_myson@yahoo.co.uk

NO JOB TOO SMALL



Calling all Supermums!

Are you a Supermum looking for success but needing flexibility around the children successful jobs don't allow! Now is your chance to have it all!

Contact Emma Joy-Staines for a short video explaining HOW on Facebook or 07809244895

Citizens Advice

the charity for your community

Rural Cambs - Ely

70 Market Street

ELY

Cambridgeshire

CB7 4LS

www.adviceguide.org.uk

Tel: 0344 245 1292

Ely Citizens Advice Bureau holds a drop-in at the library in Soham, from 10am til 12 noon on the 2nd and 4th Wednesday of each month: the next dates are:

Wednesday 10th & 24th August

Wednesday 7th and 21st September

For free, confidential, and impartial advice for a range of problems - housing, employment, relationships, benefits, debt, consumer - drop in and talk to a trained adviser.



Carpentry Services

Established 1970

For all General Carpentry
and Building Work
No Job Too Small

Grant Hounsome

34 Sun Street

Tel: 01638 780 358

Mob: 07801 950 627

merrymonk@tiscali.co.uk

carpentryservicesisleham.webs.com



Kitchens/Bathrooms

Doors/Windows

Interior. Exterior

Maintenance

Lodge Gables over

Boarded

POSS + ABILITY

CHAIR BASED EXERCISES

WITH 1-1 SUPPORT

Are you living with effects of a stroke?

Parkinson's?

Multiple Sclerosis?

Muscular Dystrophy?

Or other long term Neurological conditions?

Come along and join us at our established weekly classes in Ely, Littleport, Histon and Exning.

If you have an interest in our area of work, our team would like to hear from you. Potential staff and volunteers, please get in touch.

For a free Taster Session

Contact 07565 598193

Email : posability3@gmail.com

Website: www.posability.org

DESIGNfor**BUSINESS**
 logos • stationery • flyers
 leaflets • posters • magazines
 advertising • illustration



c o n t a c t
 Zoë • French • 07803 • 950433
 zoefrench3@gmail • com

Ronnie Harnick

Carpet Fitter

All Types of Flooring

11 Church Lane, Isleham

ronaldpaul@hotmail.co.uk

07972 720935

01638 780958

Free Quotations

Yellow Wattle

LJS Kitchens and
Carpentry

Leighton Sheldrick
Carpenter & Joiner

Leightonsheldrick7@hotmail.com

07984500535/ 01638 724873

Call us today for a free quote.



HIS 'N' HERS
SCHOOL OF MOTORING

DAVID EAVIS A.D.I. GRADE 6
& SARAH EAVIS A.D.I. GRADE 6

- + HIGHEST GRADE INSTRUCTORS BOTH
WITH 22 YEARS' EXPERIENCE
 - + PATIENT, RELIABLE, D.S.A. QUALIFIED
INSTRUCTORS
 - + STUDENT AND BLOCK BOOKING
DISCOUNTS
 - + COMPETITIVE PRICES
- WWW.HISNHERSDRIVINGSCHOOL.CO.UK**
TEL: 01638 781214

Isleham Cattery



Cat Care by Cat Lovers

Built and managed to Feline Advisory Bureau standards

All family size chalets

Inspections always welcome

Opening hours

Mon-Sat: 10:00-12:00 and 2:00-6:00

Sun and Bank Hols: 11:00-3:00

57 Waterside, Isleham, Cambs CB7 5SH

www.isleham-cattery.co.uk

01638 781367 — lorraine@isleham-cattery.co.uk

Sonia's Cakes & Savouries

Homemade for all occasions

Includes a selection of vintage
 china set up in your home or a
 choice of venue

Contact: Sonia 07885723574

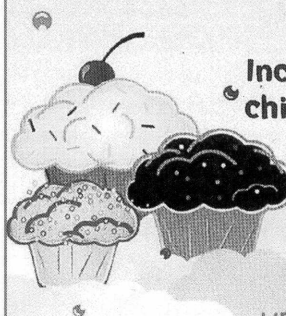
sonianorman62@gmail.com

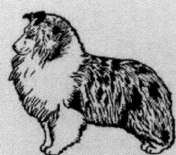
BIRTHDAYS • ANNIVERSARIES

HEN PARTIES • BRIDAL SHOWERS

BABY SHOWERS • CHRISTENINGS

...OR JUST HAVE YOUR FRIENDS ROUND!

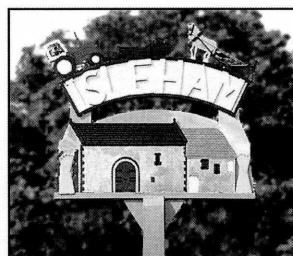




KAREN'S GROOMING

*All your pet's
grooming requirements
on your doorstep*

01638 781791
07803 548573



Isleham Parish Council Update



The Parish Council meets on the first Monday of every month at 7.15pm. Meetings are held in the main meeting room of The Beeches. Members of the public are invited to attend the meetings and 15 minutes is set aside each month for public question time. (No food or drink to be brought into the meeting room, please.)

Full copies of the minutes are available on the Parish Council website, the Notice Board and from the Parish Clerk, Diane Bayliss: tel: 01638 781687, email: islehampc@btinternet.com

VACANCY

- The Vacancy on the Parish Council has been filled by Mrs Marie Bowker.

POLICE MATTERS

- Non-emergency contact telephone number for Police dial 101.
- There is still a major problem with parking on yellow lines and on junctions and pavements in the village. Complaints have also been received about vehicles speeding in and out of the village on the Fordham and Station Roads. These matters are being reported to the police.

RECREATION GROUND REPORT

- The Parish Council has agreed to protect the Recreation Ground under the Fields in Trust 'Centenary Fields' Programme.
- It has been agreed that enquiries should be made into the possibility of providing a 3G pitch on the recreation ground.
- It was agreed that prices will be sought for the tractor/equipment store and that it should be erected before the autumn.
- A defibrillator has been provided by the Youth Football Club and placed close to the front door of The Beeches.
- There are a few slots available on the MUGA in the evenings and it is also available at weekends and during the day. Please contact the Parish Clerk for further details.
- Please remember no dogs are allowed on the Recreation Ground or on The Beeches car park and footpaths

ICA MATTERS

- Mr Paul Chaplin has resigned from the ICA Trustees and will be replaced by Mrs Marie Bowker as the Parish Council representative.

PLANNING MATTERS

Planning Applications have been received for:

- 16/00457/FUL New 4 bedroom dwelling - land adjacent 22 Little London, Isleham, Ely. Mr Richard Turner. Amendment to the parking area - the councillors agreed to submit the same objections as before.
- 16/00434/FUL Timber storage building for use of adjacent boat moorings. Land adjacent to 37 Prickwillow Road, Isleham. Mr and Mrs S Mutton. The councillors object on the grounds that the development is not architecturally suitable.
- 16/00479/FUL Removal of conservatory and replace with kitchen extension (retrospective). 3 Sun Street, Isleham. Les Wightman - no objection.
- 16/00606/FUL Single storey side extension to 63 West Street, Isleham. Mr Tony Rutterford - no objection.
- 16/00532/FUL Proposed two storey rear extension and internal alterations to 31 Waterside, Isleham. Mrs Sophie King - no objection.
- 16/00055/OUM Outline application for erection of 18 dwellings and new access at land adjacent to 8 Hall Barn Road, Isleham for Mr and Mrs Brian King - the councillors agreed that the bungalow on the right (plot 1 & 2) is located too close to the bend and could be better positioned, otherwise no objection.
- 15/01367/FUL Proposed one 1 and 1 half storey dwelling,

Rothwell's
Carpet Cleaning

01223 832 928

www.Rothwells.biz

Carpet Cleaning

& Stone Floors, Upholstery, Rugs

A few points that make us stand out from the others,

Rothwell's has been in business since 1993.

We're an honest local family firm.

Our large truck mounted machines mean more cleaning & drying power for the best results possible.

Members of both the NCCA and TACCA.

We will move the furniture for a thorough clean.

100% satisfaction or it's FREE.

Call Oliver and Max Campbell for expert help today.

Meadowview Massage Isleham

Therapeutic massage

A therapeutic massage relaxes your entire body, increasing the level of oxygen in the blood, decreasing muscle toxins, improving circulation and flexibility and easing tension.

Deep tissue massage

Deep tissue massage focuses on realigning deeper layers of muscles. It is used to relieve chronic aches and pains such as a stiff neck, upper and lower back pain, leg muscle tightness and sore shoulders. Massage can help to relieve stress, reduce anxiety, manage back pain, reduce muscle tension, ease symptoms of depression and promote relaxation.

Qualified VTCT Level 3 - Insured with

theguild
of Holistic Therapists

For more information please contact

Lisa Milne

01638 780186 or 07711 699920

lisamilnemassage@gmail.com

garage and new access drive at land rear to 52 and 56 West Street, for Mr D Clarke. The councillors agreed to submit the same objections as before.

- 16/00216/FUL Proposed six houses with cart lodges at land northwest of 15 Pound Lane, Isleham for Mrs Wendy Davies. The councillors object to the proposal on the grounds that the size of the houses is too large and there should be a brick wall alongside the footpath (from Pound Lane).
- 16/00677/FUL New three bedroom bungalow and new access (demolition of existing outbuilding) at 6 Station Road, Isleham for Ms G Miller. The councillors object to the proposal on the grounds that there should be no back building in the village.
- 16/00629/OUM Erection of buildings to accommodate up to 4,160 square metres for B1, B" and B8 uses and associated development on land allocated by Policy ISL6 of the adopted Local Plan, adjacent to Hall Barn Road Industrial Estate, Hall Barn Road, Isleham for Mr Andrew Clarke – The councillors agreed that they want something more architecturally attractive and with proper mature landscaping put in place.
- 16/00616/OUT Construction of 4 bedroom detached residence in garden of existing 4 bedroom residence at Field Farmhouse, 1 Temple Road, Isleham for Mr C S Connor – no objection.

Planning Approvals have been received for:

- 16/00369/LBX Alteration to convert games room to kitchen. Including internal alterations and installation of log burner 18, Little London, Isleham Mr and Mrs Smith.
- 16/00301/FUL Conversion of outbuilding to create additional living accommodation to 3 West Street, Isleham. Mr J Howlett
- 16/00302/LBC Conversion of outbuilding to create additional living accommodation to 3 West Street, Isleham. Mr J Howlett.
- 16/00443/FUL 1) Removal of concrete render on exterior elevations and replace concrete render with traditional lime render. Paint exterior elevations with traditional lime-wash paint. Install mat black flue for log burner on side elevation of property (not facing a highway) to extend no further than one metre above the highest part of the roof.
- 16/00479/FUL Removal of conservatory and replace with kitchen extension (Retrospective). 3 Sun Street, Isleham. Les Wightman.
- 16/00606/FUL Single Storey side extension 63 West Street, Isleham. Mr Tony Rutterford.
- 15/01069/FUL Demolish existing dwelling and erect new detached dwelling and associated works at River View 26 Prickwillow Road, Isleham for Mr Andrew Dilly.

Other Planning Matters

- 16/00440/OUM Erection of buildings to accommodate up to 3,200 square metres of floor space for B1,B2 and B8 uses and associated development, on land adjacent to Hall Barn Road industrial estate A & C Clarke & A Parr - Application withdrawn.
- TPO/E/03/71 Isleham 16/00657/TPO Tree Work Approval for 52 West Street, Isleham.

FINANCIAL MATTERS

- The Internal Audit has been carried out by Mr T Bowd. No matters for concern were raised.
- The Annual Return has been submitted to the external auditor.
- The period of elector's rights will run from Friday 1st July to Thursday 11th August.

DUNSTALL APPRENTICE GRANT

- The Dunstall Apprentice Grants remains at £250. If you are starting an apprenticeship or going to University in the autumn please contact the Clerk to see if you qualify for a grant.

HIGHWAY/FOOTPATH MATTERS

- A number of complaints have been received from parishioners about hedges, trees and shrubs growing over footpaths. It would be much appreciated if you know this is a concern outside your property that you cut them back at your earliest convenience. Parish Councillors have recently walked the parish footpaths and identified a number of remedial works which will be carried out during the next few weeks.
- If your street light is not working please contact the Parish

Clerk with the light number, she will then report it to the County Council.

- Highways issues can be reported by following the link on the County Council Website. www.cambridgeshire.gov.uk

ALLOTMENT MATTERS

- Please note that organic waste only may be burnt on the allotment sites.
- There are still a number of plots available on the Dunstall Allotment site. Please contact the Parish Clerk for details.

OTHER MATTERS

- Please be considerate when parking your vehicle – the Council regularly receives complaints about cars parked on yellow lines and in dangerous positions on the roads
- Anyone wishing to use the EFACT (Fenland) Dial-a-Ride Service must be a member. For further information ring the March office on 01354 661234.
- ECDC Call for Sites: The Parish Council have been consulted on a number of sites being considered by East Cambs District Council for future development. There will be a public consultation on the sites in November 2016.
- Dog Fouling: PLEASE REMEMBER TO CLEAR UP AFTER YOUR DOG! A number of dog bins have been installed around the village although there are still a number of incidents of dog fouling. The dog warden can be contacted on 01353 665555 or you can file a report on the website www.eastcambs.gov.uk

Parish Councillors address list

Derrick Beckett (Chairman)	Appleyard Farm, 1 Houghtons Lane, Isleham Tel: 01638 780476
Marie Bowker	1 Fordham Road, Isleham 01638 781604
Vanessa Bruyneel-Smith	115 The Causeway, Isleham Tel: 01638 781708
Paul Chaplin	Jay Jay Lodge, Waterside, Isleham Tel: 01638 781745
Jeannette Malkin	17 Little London, Isleham Tel: 01638 780283
Bob Mitchell	10 Sparkes Close, Isleham Tel: 01638 780707
Clive Patterson	21 West Street, Isleham Tel: 01638 780669
Glenda Preece	94 The Causeway, Isleham Tel: 01638 780734
Richard Radcliffe	45 Sun Street, Isleham Tel: 01638 780831
Pauline Wilkes	6 Limestone Close, Isleham Tel: 01638 780640
Les Wightman	3 Sun Street, Isleham Tel: 01638 781022
Diane Bayliss (Parish Clerk)	32 Mill Street, Isleham, CB7 5RY Tel: 01638 781687 Email: islehampc@gmail.com Website: www.isleham-village.co.uk

S. W. Downey Electrical Contractor

50 years experience

Domestic and Commercial

City & Guilds Qualified

Free Estimates

07786 108673

01638 781864

CHURCHES

St Andrew's Parish Church

Welcome to St Andrew's, the Parish Church here in Isleham. All are welcome in this community of faith in Jesus Christ. St Andrew's is part of the Three Rivers Group, including the villages of Chippenham, Fordham, Kennett, Snailwell & Isleham. Do join us for worship and fellowship on Sundays and during the week.
Rector: The Rev'd Mike Banyard, The Vicarage, 24 Mildenhall Road, Fordham CB7 5NR Tel: 01638 721616 email: banyardmg1@yahoo.co.uk

Associate Priest: The Rev'd Sue Potts, The Vicarage, chippenham CB7 5PP. Tel: 01638 721662. Email: revd.sue@icloud.com

Curate: The Rev'd Duncan Dulais.

Licensed Lay Minister: Helen Banyard, Carol Taylor

WORSHIP

Sundays: The main service is at 9.30 am. Junior Church meets in the Social Centre. On the third Sunday of every month we worship together at an All Age Holy Communion service.

Monday: 9.15 Morning Prayer at 7 The Close, Kennett

Tuesday: 8.15 Morning Prayer, Social Centre Isleham

Wednesday: 8.15 Morning Prayer, Chippenham; 4.15 Evening Prayer Snailwell

Thursday: 8.15 Morning Prayer, Fordham

Friday: 8.30 Holy Communion (BCP) Fordham

Tuesday Coffee Morning 9am – 12 noon Social Centre

Fridays 6.30pm Choir practice. All welcome. Contact Mark Liversidge 01638 781696. 7.30pm Bell Ringing, beginners especially welcome. Contact Ruth Ogden 01638 780646.

Churchwardens: Rob Savage 01638 780218 robert.savage@islehamchurch.org.uk

Tower Captain: Ruth Ogden 01638 780646 ruth.ogden@islehamchurch.org.uk

Choir Director: Mark Liversidge 01638 781696 mark.liversidge@islehamchurch.org.uk

Webmaster: Andrew Stephens 01638 781468/780229. For more information about the Three Rivers Group and St Andrew's, please visit our website at www.islehamchurch.org.uk •

Pound Lane Free Church

Pastor: Dave Hall (01638 781343 or 01638 780636, email pastor@plfc.org.uk)

Sunday worship: 11am and 6.30pm.

Celebration of the Lord's Supper: First Sunday following evening service and third Sunday following morning service. A crèche is available for babies to seven years during the morning service. Refreshments are served after the evening services, except the first Sunday of the month. Fellowship Lunches are served after the morning service on the third Sunday of the month.
Kingdom Kids (3 years–Year 3): 10–11.15am (Sue Thompson 01638 780030).

All Stars (Years 4–6): 10–11.15am (Suzanne Hall 01638 781805).

Covies (Year 7–18 years): 10am–10.30am (Steve Neale 01638 780717).

There is a hearing loop installed and signing for the deaf is available as well as Braille songbooks. We have a comprehensive Child Protection Policy and a CRB check has been carried out on all children's and young people's workers.

Monday: Music Mayhem: 9.30–10.30am (Sue Thompson 01638 780030) Preschool children during school terms. A fun time for your pre-school children – action songs, musical instruments and the ever-popular 'Sockeroo', followed by refreshments and a time to relax with friends whilst the children play. New members always welcome.

Wednesday: Church Night: 7.40–9pm. Bible study, prayer and fellowship. Age from mid-teens upwards.

Thursday: Coffee Morning: 10–11.30am. Turn up any time between 10 and 11.30am for free tea, coffee and cakes. Chat with friends and make new friends. Open to any age. Includes an eight minute 'In the News this Week' slot in the middle.

Covies Club Night: Once a month, on the Thursday after the first Sunday of the month, 7–9pm

Friday: Women's Meeting (fortnightly) 10.30–11.45am (Sue Hall 01638 780636).

Saturday: Men's Fellowship (2nd Sat of month) 8am (Paul Rogerson 01638 781343).

Christianity Explored courses are run regularly – please ask for dates of next course.

- On Sunday 11th September we shall be holding our **Harvest Thanksgiving Family Service** at 10.30am. Please come along and give thanks to our God for His abundant provision for us over another year. We will have a small display of fruit and vegetables together with a collection of items for the Soham Food Bank, and will be taking an offering to help those made homeless in Sri Lanka as a result of the May floods.

- Our new look once-monthly **Friday Fellowship Meeting** has been running since March and is going very well. We begin with a lunch at 12.00pm and have a meeting from 1.10–2.00pm which includes a bible message, prayer and hymns. Any over 60s are very welcome to come along – just call

PROBLEM WITH A FLAT ROOF OR GUTTERING?



REPLACEMENT OR REPAIRS AND GUTTERING MAINTENANCE.

Contact **LLOYD BENNETT**
 Local Experienced Grade A Roofer - 25 Years
 for FREE Advice & Estimates

LJB ROOFING SERVICES

Call us now 01638 780452 Mobile 07599 124357

the church office to let us know you'd like to come. Dates are as follows: August 5th, September 2nd, October 7th, November 4th and December 2nd.

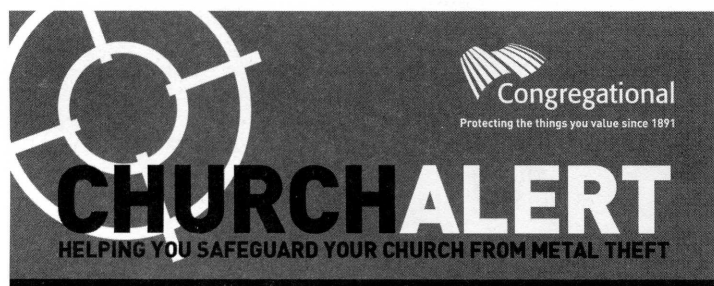
For further information on any of the above, or if you would like to speak to Pastor Dave phone: 01638 781343 (Church Office) 01638 780636 (Pastor's Home) Email: pastor@plfc.org.uk; secretary@plfc.org.uk Web sites: www.plfc.org.uk; www.isleham.com •

High Street Church

High Street Church Gala day was fun! Our thanks to all of you who worked so hard to pull off this event for the village. As I write, summer is here at last, school term nearly over and all beginning to enjoy the weather and the lighter evenings. We have lots of events taking place over the summer and you and your family are more than welcome to join us. We really believe that Church isn't just about Sunday services, it's also about enjoying time together socially as God's family. So if you are interested in a sporting event, a craft session, a picnic, a trip to the seaside or anything else you hear about, just give us a ring on 01638 780985 to find out the details. Hope you really enjoy your summer, whatever you're doing, and remember, only 168 days 'til Christmas!

• Catch us on Facebook – High Street Church Isleham – or our website www.highst.org.uk

SUNDAY SERVICES: All are welcome to our Sunday services throughout the year. Morning worship: 10.30am All ages are very welcome from the very young to the very old. The children have their own activities. Evening fellowship: 6.30pm A less formal service usually with opportunity for individual sharing. Come and hear about God's goodness! Tea, coffee and good conversation are available after both the morning and evening services •



THIEVES ARE TARGETING CHURCHES IN THIS AREA

**PROTECT YOUR CHURCH
FROM METAL THEFT**

**FOR MORE INFORMATION AND RESOURCES VISIT
WWW.CHURCHALERT.CO.UK**

123 Bookkeeping Services

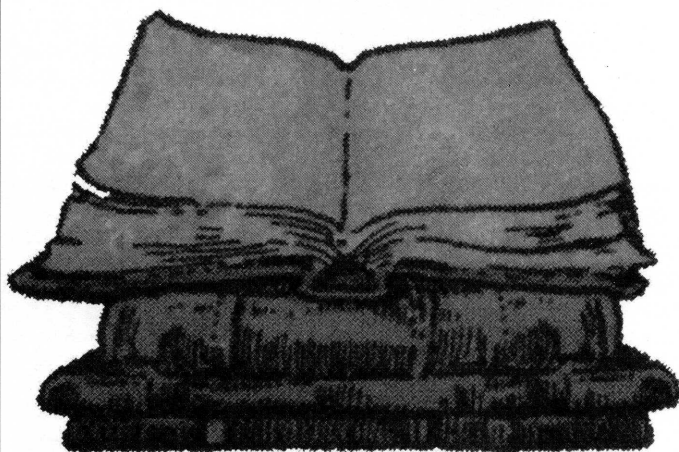
BOOKKEEPING, PAYROLL & VAT

Cheryl Roberts

38 Guntons Close, Soham CB7 5DN

07815 865151

cherylroberts123@hotmail.com



OvenPad Cleaning Services

I will professionally and efficiently clean ovens, ranges, Agas, ceramic hobs, extractors, microwaves and BBQs.



It's a dirty job:
why not give me a call?
Please contact Paddy Kelly on
Tel: 01638 742703
Mobile: 0775 263 1343
Email: info@ovenpad.com
www.ovenpad.com

Beeches Diary Dates 2016

Edmund Octet

Friday 9 September

Family Hallowe'en Disco

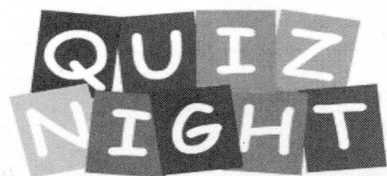
Saturday 29 October

Sportsmans' Dinner

Saturday 11 November

New Year's Eve Party

Saturday 31 December



Last Friday of the month

NB: Dates may be subject to change

26 August • 23 September

21 October • 25 November

at 7pm for a prompt 7:30pm start

Tables limited so please make sure you arrive early.

*Keep an eye out for posters, check the website
thebeechesisleham.co.uk and FaceBook
for details of upcoming events*



August & September 2016

Monday –

- 10am – 11am Pilates
- 6pm-9pm Pilates

Tuesday –

- 4:00pm- 8pm Ballet/Cubs/Scouts

Wednesday –

- 9am -12 Busy Bees
- 9am -12 Bridge
- 10am -11:30am Needles and Natter
- 12-1pm Pilates
- 6:30pm – 7:30pm Hour of Power

Thursdays –

- 6pm-6:45pm Power Hoops
- 6:45-7:30pm Your Body Class

Friday –

- 7pm-8:30pm Ballroom Dancing

Saturday –

- 9am -10am Hour of Power
- Breakfast Baps 9am - 1pm
- Cafe open from 9am until close event depending

Sunday –

- Cafe open from 9am - close event depending
- Breakfast Baps 9am - 1pm

In addition to the above events, we will also be open:

Monday-Friday 10am-1pm & 6-8pm

Saturday 9-10am & 2-4pm • Sunday 12 - 4pm

CONTACT BEECHES MANAGER LOUISE QUINN

Tel: 01638 780097 • Mobile: 07742 832300

FARR

PAINTING AND DECORATING

Andrew Farr

14 East Fen Road,

Isleham CB7 5SW

Tel: 01638 780375

Mob: 07768 328387

Interior and exterior

Painting and decorating

Paper hanging

Commercial and

domestic

Over 30 years'

experience



Coffee MORNING

Wednesday

10th August

9.30am~12noon

and on the second

Wednesday

of every month

*Join us in the café for
Sonia's homemade cakes
& refreshments...
everybody-welcome!*

♥ SUPPORT YOUR LOCAL COMMUNITY CENTRE ♥



**An Autumnal Evening Concert
by
The Edmund Octet**



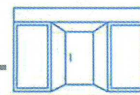
An all male group singing in harmony
barber shop, WW1 tribute, musical medleys, solos and much more

Friday 9 September 2016

Doors open at 7pm for a 7.30pm start
£5 a Ticket

Tickets available from
The Beeches, Isleham - 01638 780097

My Shop is Local



A great new service for Ely and surrounding areas

A brand new service for Ely and surrounding villages has been recently launched: you can now order your essentials, gifts and more from Ely's local independent shops and use our click & collect option or have it delivered to your home or work place. There are thousands of people who for various reasons cannot make it to Ely city centre during shop opening hours. Many people say they would like to support local shops and hence the local economy, but are not always able to do so due to working out of town, lack of transport, feeling poorly or for other reasons. Ely's My Shop is Local has been set up by long-term Ely residents Ivar and Martina Jossen. Their new shopping website ely.myshopislocal.co.uk aims to help residents to shop locally at their convenience and at the same time support local independent shops in these tough times. Having selected goods on the website from multiple local shops into just one order, customers can choose either to collect their order from the shop itself, collect the order in the evening from Spar on Ely High Street, or have the order delivered for a small fee. 'By using ely.myshopislocal.co.uk residents can support their local shops even if they cannot make it to the town centre', says Martina. 'It is so easy to use and you can decide if you want to collect your order or have it delivered.'

Website: ely.myshopislocal.co.uk Facebook: [ElyMyShopIsLocal](https://www.facebook.com/ElyMyShopIsLocal)



Total Peace of Mind

Local • Independent • Professional

**Readwin
Barclay**
SOLD
01638 551551

**Lodge
Lettings**
LET BY
01638 551551

SIGNS OF EXPERIENCE

These are the only two names you need to know.

If you are considering selling or letting your property.

Competitive fees and no hidden charges.

Contact us now to discuss your property.

Telephone: 01638 551 551

Email: enquiries@readwinbarclay.co.uk **Website:** www.readwinbarclay.co.uk

Email: enquiries@lodge-lettings.co.uk **Website:** www.lodge-lettings.co.uk

Office Address: Unit 6 Bellflower Crescent, Red Lodge, Suffolk, IP28 8XQ



Cambridgeshire
County Council

Have you checked when your concessionary **BUS PASS** runs out?

**It's up to you to check when it does
and get it renewed.**

If you don't and your pass has expired you will be refused free travel.

Passes can be renewed up to 6 weeks before their expiry date.

Just go to www.cambridgeshire.gov.uk/concessionary

If you can't get your renewal done online then call the number printed
on the back of your pass.

www.cambridgeshire.gov.uk/concessionary

Manufacturers & Suppliers of **Blinds & Awnings**

- Free Expert Measuring
& Fitting Service
- Specialist Advice
from Knowledgeable
and Professional Staff
- Only Top Quality
Materials & Components
- Well Reputed
Local Company



1st FIESTA BLINDS

Studlands Park Avenue, Newmarket CB8 7EA

Telephone: 01638 665010

www.fiestablinds.co.uk



VELUX



- Vertical • Venetian/Wood Slat • Roller • Pleated • Roman
- Velux • Woven Wood • Canopies • Awnings

Escape Room arrives at Oliver Cromwell's House

Arrested by Parliament, for your 'crimes', you face execution.
Can you escape your grisly fate
or will Cromwell's Men see you to your end?

How well will you work with your
friends or colleagues to locate
clues and solve puzzles in order to
find the key that will allow you to
escape the locked room in just
60 minutes?

Bookings now being taken for
the first weekend of every month
starting in September 2016.

Suitable for groups of 4 to 8
people (over 14 years).

£80 per session

Oliver Cromwell's House, 29 St Mary's Street, Ely. CB7 4HF. 01353 662062
tfc@eastcamps.gov.uk www.olivercromwellhouse.co.uk @cromwellshouse

Discover Ely's Heritage during



Heritage Weekend

Friday 9th September – Open Night

Oliver Cromwell's House, The Stained Glass Museum and Ely Museum will open their doors
with free admission in the evening so you can experience these atmospheric buildings after
hours

Saturday 10th September – Open Tours

Enjoy free guided walk around Ely City's Centre as well as guided tours of Ely's Visitors
Attractions including The Old Palace.

Sunday 11th September – Open Houses

See behind the doors of a variety of buildings not normally open to the public including
Silver Street Cottages, Monastic Barn, Ely Porta, Ely Cathedral and Prior Crauden's Chapel.
Limited places available which must be pre-booked via Ely's Tourist Information Centre.

For more details and to book on a tour, please contact Ely Tourist Information Centre,
on 01353 662062 or visit www.visitely.org.uk or follow us on Twitter @visitely