

ISLEHAM Informer



Remembrance Parade

Here dead we lie
Because we did not choose
To live and shame the land
From which we sprung.

Life, to be sure,
Is nothing much to lose,
But young men think it is,
And we were young.
A E Housman

Representatives of Isleham Primary School and the Isleham 1st Scouts, Cubs, Beavers and Brownies attended the Remembrance Parade bearing their flags, and laid wreaths at the memorial. A service of Remembrance was held in St Andrew's Church afterwards.

Poppy Appeal 2015

Pauline Wilkes & Gill Savage (Poppy Appeal Organisers) would like to thank everyone who donated so generously to this year's appeal. Special thanks are due to Brian Challis, who spent a great deal of his spare time collecting around the village. If anyone would like to assist him by becoming a street collector for next year's appeal, please let Pauline or Gill know. Your help would be much appreciated!

A total of £1968.73 has been sent to the Poppy Appeal fund. Well done everyone! *Gill Savage*



Above: Clive Patterson lays a wreath on behalf of the Parish Council



Photos Vernon Place

SEASONS GREETINGS TO ALL! PLEASE SEND IN YOUR VILLAGE NEWS AND PHOTOS, EVERYONE LIKES TO SEE THEMSELVES IN THE INFORMER!



SUNRISE BLINDS

ALL MADE TO MEASURE

For all your window dressings including all types of blinds, curtains, internal wooden shutters, external awnings and canopies. Home visits, free quotations, free fitting appointments always available.

Visit our showroom at Unit 7 Hall Barn
Road Industrial Estate Isleham, Ely,
Cambs CB7 5RJ
Telephone: 01638 781881



City & Guilds
NPTC
Qualified



01353 882188
info@actreeandgarden.co.uk

Fully Insured Award Winning Local Business
available for all Tree Surgery, Hedge Cutting,
Planting, Grass Cutting, and Garden Care
Contact us today to arrange your free, no obligation
on site quotation



KARMA FARM www.islehamfen.co.uk

8 Fen Bank, Isleham; Tel: 07900 961217



The Beautiful Eco-Campsite on Isleham Fen



Established family run business

Tree Felling - Dismantling - Removal
Stump Grinding - Stump Removal
Crown Reduction - Thinning
Consultancy & Surveys
Site Clearance - Grounds Maintenance
Hedge Cutting - Qualified & Insured



City & Guilds
NPTC

01638 780188

info@greenwoodtreesurgery.co.uk
www.greenwoodtreesurgery.co.uk



4+ Car Servicing
& Warranty

Why trek into Cambridge or Bury?

Visit us, your local Renault garage. We can carry out all of your 4+ service contracts and warranty repairs.

- Established for 50 years, we're now conveniently situated off Studlands Park Ind Estate, Newmarket
- Fully trained Master and Senior Technicians
- Free charging of electrical vehicles whilst the car is in the workshop

Book now 01638 661 113 or email
service@manchetts.co.uk

1 Victoria Way, Studlands Park Ind Estate,
Newmarket, Suffolk CB8 7SH

www.manchetts.co.uk



MANCHETTS
www.manchetts.co.uk Tel: 01638 661113



Isleham Informer

The *Isleham Informer* is published six times a year, every other month.

CONTACTS • Editor Ed Mayall T: 01638 780839 E: ed@islehaminformer.org.uk • **Advertising** Emma Joy-Staines T: 07809244895 E: emmajoystaines@yahoo.co.uk • **Design & layout** Zoë French T: 01638 780007 E: zoefrench3@gmail.com • **Features** Glenda Preece T: 01638 780734 E: gjprece@aol.com • **Distribution** Fred Preece T: 01638 780734 • **Published by** Isleham Parish Council • **Printed by** Gipping Press www.gippingpress.co.uk **NEXT ISSUE:** Published 1st February 2016 (dependent on staffing). The deadline for all editorial and advertising is 9th January 2016.

DISCLAIMER: The *Informer* would like to point out that we have neither tried nor tested all of the products and services advertised in these pages and therefore cannot accept responsibility for the veracity of any claims made.

Useful Information

Mobile Library

1st Thursday of the month:	Arrive	Depart
Church Street	2.15pm	3pm
Mill Street	3.05pm	5pm
3rd Friday of the month: Church St	9.30am	10.10am

Useful phone numbers

Emergency for Police, Fire, Ambulance.....	999
Police (Non-emergency).....	101
Accident & Casualty (Addenbrooke's).....	01223 217118
Addenbrooke's Hospital (Cambridge).....	01223 245151
Newmarket Hospital	01638 564000
West Suffolk Hospital (Bury St Edmunds).....	01284 713000
Staploe Medical Centre (Soham)	
- Appointments.....	01353 624121
- Prescriptions & Dispensary.....	01353 727695
- Enquiries, Home Visits, Emergencies.....	01353 624123
Minor Treatment Centre, Ely.....	01353 656675
NHS Direct (for advice).....	0845 4647
GP Out-Of-Hours (non-emergency)	111
Electricity Emergencies	0800 7838838
Gas Emergencies	0800 111999
Anglian Water Leaks	0800 771881
- 24 hour	0845 7145145
Social Services - office hours.....	0345 0455202
- out of hours emergency	01733 561370
Refuse Collection.....	01353 665555
RSPCA	07599 522716
- Cruelty line.....	0300 1234 999
Citizens Advice Bureau	Ely 0845 130 6442
	Mildenhall 01638 712094
	Newmarket 01638 665999
District Councillor: Derrick Beckett.....	01638 780476
Parish Council Clerk: Diane Bayliss	01638 781687
MP: Lucy Frazer.....	lucy.frazer.mp@parliament.uk

GARDEN BARBER

Does your lawn need a cut?
Do the shrubs want a trim or would
the borders like a bit of colour?

If so call the Garden Barber:

07500 967233 / 01638 781412

or email gardenbarber@yahoo.com

40 years of experience in
commercial horticulture & private gardening



Dates for Your Diary

If there is anything you would like included here for future issues: contact Glenda Preece, T: 01638 780734 E: gjprece@aol.com.

REGULARS

Tuesdays: Coffee Morning at the Social Centre, 9am-noon
Mondays & Wednesdays Coffee&Cake at The Beeches 9am- 1pm
Saturdays & Sundays Breakfast Baps at The Beeches 10am-1pm

December

Monday 7th	Parish Council	The Beeches, 7.15pm
Wednesday 9th	Christmas Bingo	Bowls Club, 7.30pm for 8pm
Thursday 10th	W.I.	The Beeches, 7.30pm
Thursday 15th	Isleham Society	The Beeches, 7.30pm
Friday 18th	Mobile Library	Church St. 9.30-10.05am
Sunday 20th	Family Christmas Disco	The Beeches, 5-10pm
Thursday 31st	New Year's Eve Party	The Beeches, 7pm-1am

January

Thursday 7th	Mobile Library	Church St. 2.15-3pm
		Mill St. 3.05-5pm

Saturday 9th

Monday 11th	Parish Council	The Beeches, 7.15pm
Thursday 14th	W.I.	The Beeches, 7.30pm
Friday 15th	Book Club	2pm The Beeches
Friday 15th	Mobile Library	Church St. 9.30-10.05am
Tuesday 19th	Gardeners Club	The Beeches, 7.30pm Thursday
21st	Isleham Society	The Beeches, 7.30pm

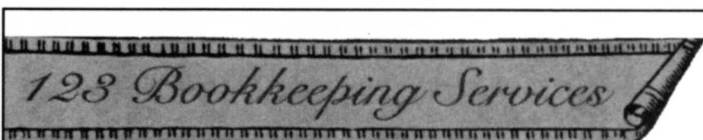
INFORMER DEADLINE

Village Notes

Lady Francis Peyton Hospital Almshouse Charity is looking for a new Clerk. The Charity has four houses off The Causeway and Sun Street. We meet officially twice a year in March and October. Meetings are usually one and a half hours duration; all other business being done by email. One of our Trustees is our Treasurer, and completes all the financial duties. If you are interested please contact: Fred Preece, 94 The Causeway Tel: 01638 780734 Email: fpreece2@aol.com.

Isleham Bowls Club Christmas Bingo at the Bowls Club, Wednesday 9th December: eyes down at 8pm.

Isleham's Got Talent Saturday 27th February at The Beeches. To book your slot please contact Barbara Murfitt 01638 780373.



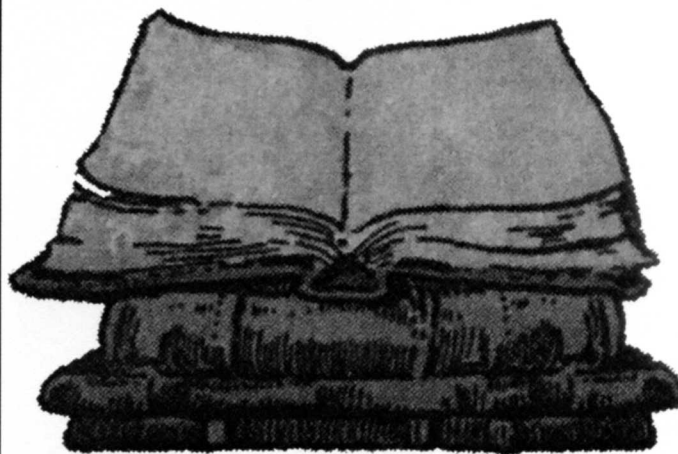
BOOKKEEPING, PAYROLL & VAT

Cheryl Roberts

38 Guntons Close, Soham CB7 5DN

07815 865151

cherylroberts123@hotmail.com



Village clubs: information

CLUB	CONTACT	DAY/DATE	TIME	PLACE
1st Isleham Beavers (boys & girls 6-8 yrs)	Sue Harrison 781837	Tuesday	5.15-6.15pm	The Beeches
1st Isleham Cubs (boys & girls 8-10 yrs)	"	Tuesday	6.30-8pm	The Beeches
1st Isleham Scouts (boys & girls 10-14 yrs)	"	Tuesday	6.30-8pm	The Beeches
Angling Society	Ivan Houghton 01638 780333			
Ballet & Dance	Lisa Nixon 07512 717758	Tuesday	from 4.30pm	The Beeches
Ballroom Dancing	Cynthia George 01954 202095	Friday	7pm	The Beeches
Board Games	Alison Young 01638 780351	Last Thursday	2-5pm	High St. Church
Book Club	Doreen Spiers 01638 780783	2nd Friday	2pm	The Beeches
Bowls Club	Terry Pinder 01638 720875			
Bridge Classes	Barry Lowe 01353 658358	Wednesday	10am-noon	The Beeches
Brownies	Bridget Clements 01353 624103	Thursday	6-7.15pm	High St. Church
Busy Bees	Pre-School 01638 781212	Wednesday	9.30-11.30am	The Beeches
Craft Club	Hazel Thompson 01638 780633	Tuesday	1.30-4pm	Limestone Centre
Isleham Gardeners	Jenny Hodd 01638 780729	3rd Tuesday	7.30pm	The Beeches
Isleham Society	Vernon Place 01638 780449	3rd Thursday	7.45pm	The Beeches
Isleham United Youth FC	Steve Isaacson 07545 395573			
New Age Kurling	Lisa Milne 01638 780186	Friday	2-3.30pm	The Beeches
Pilates	Jo Simcock-Simms 07974 653775	Monday	7-8pm, 8-9pm Wednesday	The Beeches 12 noon
Tania Fitness	Tania McQuilkin 07983 440187 Powerhoops & kettlebells	Tuesday	9.30-11am	The Beeches
Twinning Association	Keith Woollard 01353 723010	Annual visits to and from Nesles		
WI	Glenda Preece 01638 780734	2nd Thursday	7.30pm	The Beeches

Peter's Bridal Warehouse

Peter Bullman
(Formerly of Heart Brides)
WEDDING DRESS
FACTORY OUTLET

Unit 21 Northfield Business Park
SOHAM
Just off A142 Soham By Pass

Stunning Dresses,
Size 8 to 36 always in stock
Priced from £299 to £899

Call 07917757862

www.petersbridalwarehouse.com
Facebook Peter Bridal Warehouse



Emma's Beauty Co

Offering a wide range of luxury nail, beauty and holistic treatments since 2007

Dermalogica Facials
St Tropez Tanning
Shellac, Minx and Vinylux
Manicures & Pedicures
Acrylic Nails
Waxing
Hot Stone Massage
Lash lift
and much more!!

With our therapists
Emma and Rachel

07843665928
emmasbeauty20@gmail.com

Situated in West Row

Sonia's Cakes & Savouries

Homemade for all occasions

Includes a selection of vintage china set up in your home or a choice of venue

Contact: Sonia 07885723574

sonianorman62@gmail.com

BIRTHDAYS • ANNIVERSARIES
HEN PARTIES • BRIDAL SHOWERS
BABY SHOWERS • CHRISTENINGS
...OR JUST HAVE YOUR FRIENDS ROUND!

AMS Building and Landscaping Ltd

Our areas of expertise include:

- Driveways and paving
- Driveway cleaning and sealing
- Patios and paths
- Fencing, trellis work and decking
- Turfing and seeding
- Garden design
- All building work
- Property maintenance
- Garden and property clearance

Call for FREE estimates and bookings:

Office: 01638 721893 or Site: 07789261266

Please visit our website for examples of our work & refs:
www.amsbuildingandlandscaping.co.uk



The Clean Sweep

Christian Weston

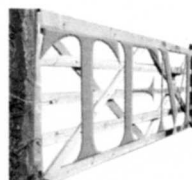
Institute of Chimney Sweeps
trained and approved

Swift, thorough, clean service

Safety certificates issued

Fully insured

- Tel: 01353 699831
- Mobile 07505001559



TFM Butchers

Order for Christmas from

TFM Butchers, FENROSE FARM, 1 Fen Bank, Isleham CB7 5SL

Tel: 01638 780994/780431

Email: info@thompsonsfarmisleham.co.uk
www.thompsonsfarmisleham.co.uk

Beef Joints

Pork Joints

Lamb Joints

Free Range Chicken

Gammon Joints

Bacon

Chipolatas/Sausages - Sausage Meat etc

ALSO

Locally produced Bronze Turkey

TFM Butchers Shop on the Farm
Opening hours:

Tuesdays: 12 noon-5.30pm, Thursdays: 9am-5.30pm, Fridays: 12 noon-5.30pm,
Saturdays: 10am-4pm, Sundays: 10am-12noon

Buy British Buy local Buy from the farm gate

S. W. Downey Electrical Contractor

42 Years' Experience
Domestic and Commercial
City & Guilds Qualified

Free Estimates

07786 108673

01638 781864

Pooley Bendall Watson SOLICITORS

For a friendly and professional approach

- Domestic & Commercial Property
- Family & Matrimonial Matters
- Wills, Probate, Trusts & Tax
- Company & Employment Law

2 Three Cups Walk, Fore Hill, Ely Cambs CB7 4AN
Tel: (01353) 666075 Fax: (01353) 666162
Email: info@pbw.uk

Also at: 4b Church Street, Isleham, Cambs CB7 5RX
Tel: (01638) 780170 Fax: (01638) 780190

P B & W Solicitors LLP is a Limited Liability Partnership, trading as Pooley Bendall & Watson Solicitors.



DRAIN-PLUMB

Plumbing, Heating & Drain Services BLOCKED DRAINS CLEARED

- Gas Boiler Service & Maintenance
- Power Flushing to Heating Systems
- Home Buyers' CCTV Drain and Plumbing Surveys
- All Plumbing & Heating Repairs and Alterations
- All Work Guaranteed

TEL: 01638 742873
MOBILE: 07932 773515
7 Ness Road, Burwell
Cambridge, CB25 0AA



NICEIC PART P APPROVED ELECTRICAL CONTRACTORS

Avocet Electrical Technology are electrical contractors working throughout Cambridgeshire, Suffolk and across East Anglia.

We cover electrical projects for the commercial, industrial and agricultural sectors and are NICEIC Part P Registered for domestic projects.

Our expertise includes:

- Bespoke LED lighting design, supply and installation
- Installation of single and three phase systems
- Maintenance and repair of agricultural, commercial, industrial and domestic installations
- Low energy lighting consultation
- Inspection and testing
- Fire alarm design and installations
- Home automation

Please do not hesitate to contact us with any query.



T: 01638 780033 M: 07800 832619

E: info@avocet-electrical.co.uk W: avocet-electrical.co.uk

Avocet Electrical Technology 43 The Causeway Isleham Cambridgeshire CB7 5TA

LANGTRY FITTED FURNITURE



EXTENSIVE RANGE OF KITCHENS AND BEDROOMS



BESPOKE & HANDMADE FURNITURE

SHOWROOM OPENING HOURS:

7am to 5.30pm Mon - Fri
9.30am - 4.30pm Sat

Unit 24, Northfield Business Park,
Soham, Ely, Cambs. CB7 5UE
(Behind Scampers)

Tel: 01353 725380

Fax: 01353 725384

Out of hours phone:
Tony on 07738559569

- From Design to Completion
- Supply & Fit or supply only
- Top Brand White Goods
- Bespoke Sizes to fit any Kitchen & any budget
- Free Design service

www.langtryfurniture.co.uk

A letter from Lucy Frazer MP regarding broadband

Access to broadband is critical to Cambridgeshire businesses and residents. As I met parish councils over the summer, it was clear that there are some small villages which are not properly connected.

Some people have contacted me about poor broadband in Isleham. At a time when we are investing in superfast broadband and increasing connectivity, it is not acceptable that many people still have such issues. I want to correct this.

On Friday, 23rd October, I held an open meeting to bring together BT, Connecting Cambridgeshire and affected residents to resolve these problems and I wanted to update you on Connecting Cambridgeshire's and BT's position at that meeting.

Connecting Cambridgeshire has told me that in Isleham Marina, superfast broadband will be delivered by Connecting Suffolk. Connecting Cambridgeshire has liaised with Connecting Suffolk, who has confirmed that the premises in Isleham Marina are in their programme. This will be delivered in 2018. If you have broadband but are still experiencing slow speeds, Connecting Cambridgeshire would like to know.

Whilst I am very happy to assist with all queries, Connecting Cambridgeshire is very keen for those with problems to contact them directly. For specific broadband issues and information on the broadband programme, you can contact Connecting Cambridgeshire by emailing contact@connectingcambridgeshire.co.uk. For BT-specific issues, if you have already spoken with your service provider, you can call BT directly to try and resolve the issue.

I will continue to press Connecting Cambridgeshire and BT to deliver a service that we deserve. *Lucy Frazer MP*
lucy.frazer.mp@parliament.uk facebook: *FrazerLucy*

Players need direction!

Isleham residents will surely be aware of the impressive stage at The Beeches, which has recently been fitted with curtains and stage lighting. The Phoenix Players, Isleham's drama group, have recently re-formed in order to take advantage of these new facilities. We intend to put on comedies, reviews, murder-mysteries and so on; our first production is to be the hilarious comedy *Inspector Drake and the Perfect Crime*, which is due to be performed on 20th and 21st February 2016. Look out for further details about this production.

We also wish to revive Isleham's very popular pantomime, and for this we need your help! Pantomime requires a large cast, about thirty including the chorus, so we will need to recruit many more members. You don't need to have acted before, just come along and join in, it's great fun! In particular we need both a Director and a Producer, preferably with experience of pantomime. These are key positions and it is possible we may need to look outside the village. If anyone can help, either by becoming a cast member, taking on the role of Director or Producer, or by putting us in contact with likely candidates, this would be greatly appreciated. Please contact Malcolm & Doreen Speirs on 01638 780783 or Marie Bowker on 01638 78160 •

• If you would like your club, society or organisation's news and photos to appear in the *Isleham Informer*, please contact any member of *Informer* staff - see page 3 for contact details. Please supply your article and photos by January 9th for our February issue (but we may be able to accommodate copy after that date, do check with Zoë). We also need the photographer's name where necessary and details of photos for captions: please do ask subjects to give their permission to appear in the *Informer* - children should have parents' permission.

Christmas cakes

*** BACK BY POPULAR DEMAND ***



Charity Registered No. 1140680

BECKen Charity is baking Christmas Cakes again this year and is ready to take your orders now!

BECKen Charity is based in Isleham Cambs and raises funds to pay school fees for high school/college students in Kenya. The charity also supplies educational items to several primary schools around the area of Ukunda, Kenya

Please visit our website for more information:

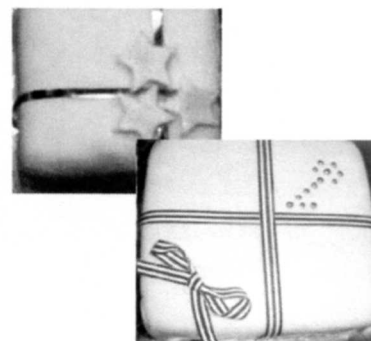
www.becken.co.uk

Prices:

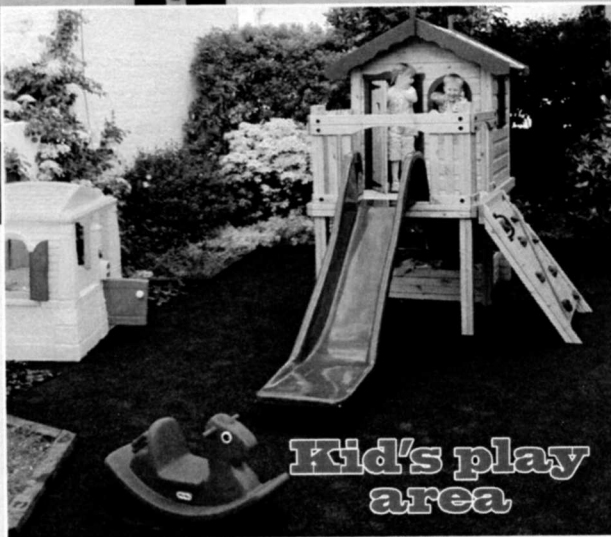
4" cake - £9
6" cake - £13
8" cake - £24

Call Chris: 07990 542872 or
Jo: 07947 205480

Cakes are fully covered with
Marzipan and Icing
(can be left plain on request)



The Rising Sun



Sun Street, Isleham.
Tel: 01638 780471

OPENING TIMES

Monday: 7pm to Close

Tuesday to Thursday:

12 noon to 3pm, 7pm to Close

Friday, Saturday: 12 noon to Close

Sunday: 12 noon to 10.30pm

FOOD SERVED

Friday 12 noon to 2pm and 7pm to 9pm

Saturday 12 noon to 9pm

Sunday 12 noon to 2pm

CHECK BLACKBOARD FOR BANDS AND DISCOS

Brand New B&B at The Rising Sun



**2 newly renovated and
refurbished rooms available
now for B&B at excellent rates**

**For further details please see
our brand new Website at
www.risingsunisleham.co.uk**

Isleham Society

Thompson's Farm and Shop: The presentation by three generations of the Thompson family gave an update on a previous presentation showing how they have progressed and developed their business to date.

Margaret told of how, with her husband John, they started over forty years ago by rearing three piglets in John's father's back garden; the piglets were later sold and from the proceeds they bought a sow. A humble start, and a lot of hard work has grown into the thriving family business it is today.

A major change came in 1976 when John and Margaret moved to 1, Fen Bank Road, Isleham (opposite to the entrance of the Marina) with their sons Steven and Martin, building a new bungalow and farm buildings. Steven is involved with the farming aspect of the business and Martin in agricultural contracting, using the most up to date equipment. In 2005, they started selling their family bred Hereford cattle and pork and bacon from the 'Farm Gate': actually a shed on the farm. In 2013 they expanded and opened TMF Butchers where, under supervision, you can make your own sausages! (You do need to book an appointment.)

The cattle graze on the Wash during the summer and in the winter feed on locally grown corn, while the pigs are kept in straw yards. They adhere to high welfare standards and are members of a Red Tractor Assurance Scheme for the cattle and pigs. They have found a niche in the market for home reared stock with good value-for-money products, also supplying events such as Isleham Gala, Soham Pumpkin Fair and a local Hog Roast company.

It was an informative and interesting presentation by Margaret, her son Martin, daughter-in-law Rosie (wife of Steven), and her daughter, Anna. It was particularly impressive as all members of the group presented their own part in the business so well – a real family presentation. It was noticeable they are embracing all the modern techniques and equipment coupled with good husbandry of the land and the animals in their care and are to be congratulated. Sadly, Margaret's husband John was unable to come due to ill health, but he would have been justly proud of them all.

More information can be found on their website: www.thompsonsfarmisleham.co.uk.

Future events

19th November: 'Chippenham Fen': An illustrated talk by Chris Hainsworth from Natural England and Chippenham Fen.
December: no meeting
21st January 2016: 'Old Isleham' by Vernon Place

Visitors are welcome to attend any of our meetings – the cost to non-members is just £2 per person. *Vernon Place, Chairman*

WWW.CSPSERVICES.CO.UK

Computer/laptop repairs, upgrades & new builds, virus & spyware removal plus data recovery.
Printer cartridges at good prices.
Telephone points, routers & networks installed & set up.
Spare monitors, keyboards, mice & printer available for short term loan when yours goes wrong.
Watch batteries fitted.

Transfer 35mm slides to computer.
Also selling online

Contact us:
Tel: 0163870669 Mob: 07771830336

Email: enquiries@cspservices.co.uk or patterson.clive@gmail.com
Website: www.cspservices.co.uk or via www.islehamwest.co.uk

Local Foodbank News

Thank you! Why? Because, in the past year, kind people like you have donated more than 4,000 items of food for the local Foodbank, and over £275 in cash! In the last week of September, for example, we took a record 166 items of food to the Foodbank distribution centre at Soham (Salvation Army, Bushel Lane). The voluntary staff there told us that, in the first half-hour of opening that Thursday morning, they were rushed off their feet, with thirteen applicants needing emergency food help.

Some of the stories they tell are really very sad, with people absolutely desperate for help. Yes, of course there may be 'scroungers' and people who 'play the system' – as there are anywhere else in society. But in fact there are very few applying to the Foodbank, and the volunteers are good at spotting and then gently discouraging them. But the vast majority of people we help are really at their wits end about how to get through the next few days.

Just call in on a Thursday morning and speak to the organiser, Mr Howard Laver, to hear some of the extraordinary situations people find themselves in, often through no fault of their own. Sudden redundancy, bereavement, marital upsets – the list is endless, and an absolute disgrace that thousands of people in the UK should need Foodbank help. Having said that, however, we are glad to help complete strangers, without judging them, realising that it must take quite a deal of courage to ask for Foodbank help!

Coffee and biscuits are served, giving people the chance to tell their stories in complete confidence and in a relaxed manner. If you'd like to offer your help, pop along on a Thursday morning between 9.30am and 11am, introduce yourself, and see firsthand what goes on. The places in Isleham where people can contribute food items and/or cash, are St Andrew's and High Street churches on Sundays, at St Andrew's Social Centre on Tuesday mornings between 9am and 12noon, and at the Co-op in Isleham. So once again, thank you so much for your support! *Christopher Goodwins*

ST. ANDREWS CHURCH

**CHRISTMAS
TREE DISPLAY**


**FESTIVAL
OF
LIGHT
2015**

**REFRESHMENTS
SATURDAY
AND SUNDAY
3.00 – 6.00PM**

**DECEMBER
5TH - 6TH - 12TH - 13TH**

**CHRISTMAS FAYRE
SATURDAY 5TH**

**Vote for your favourite hymn
for the
Family Carol Service
on Sunday 13th December at 4pm.**



P.J.Carrington Gas Heating and Plumbing Services

Servicing and Installation
Domestic Natural Gas L.P.G.
Boilers and Appliances
Part 'L' Heating Efficiency
Gas Fires
Underfloor Heating
Bathrooms, Wet Rooms
Kitchens
Fully Certified
Fully Insured
Landlords Certification
No Job Too Small!
Mobile Park Homes, Leisure Vehicles, Boats
Unvented Domestic Hot Water Systems
Oil fired boiler service and repair

T: 01638 781790

M: 07533 172539

E: carringtonpj@live.com

W: www.pjcarringtonheatingandplumbing.co.uk



**68 Isleham Marina
Fen Bank
Isleham
Cambs CB7 5SL**

Ronnie Harnick

Carpet Fitter

All Types of Flooring

11 Church Lane, Isleham

ronaldpaul@hotmail.co.uk

07972 720935

01638 780958

Free Quotations



ESACT TRANSPORT

If you live in Aldreth, Fordham, Haddenham, Isleham, Little Thetford, Soham, Stretham, Upware, Wicken, Wilburton, did you know that you could have access to a FIVE day a week Dial-a-Ride transport service that picks you up from your door?

Membership with us costs just £10 per year and transport is half the fare with your Bus Pass.

We travel into towns for shopping, doctors surgeries, hospitals and we also provide monthly trips to St Ives, Cambridge, St Neots, Huntingdon and offer day trips and lunch outings.

Join us straightaway to start enjoying this transport.

ESACT
ELY & SOHAM ASSOCIATION FOR COMMUNITY TRANSPORT

01353 661161

**HALF THE FARE
WITH YOUR BUS
PASS**

**MEMBERSHIP
ONLY £10 FOR
THE YEAR**

**DOOR-TO-DOOR
TRANSPORT**

**FIVE DAY A WEEK
DIAL-A-RIDE**

**CALL US TODAY!
01353 661161**

**ESCAT TRANSPORT
5 Martin Avenue
March
Cambridgeshire**

01353 661161

www.escat-cambs.co.uk

FOREVER



Do you know anyone who suffers from?

hiatus hernia allergies

sinusitis osteoarthritis

cystitis stomach ulcers chronic fatigue

psoriasis IBS asthma

Crohn's disease sciatica arthritis eczema

ME diverticulitis

dermatitis cold sores acne

colitis osteoporosis

Our products could help! Ask us how

Emma and Leigh Joy-Staines

07809244895

Emmajoystaines@yahoo.co.uk

Isleham WI

theWI
INSPIRING WOMEN

Our Members Night in October was arranged by Kathy Carver and Sheila Taylor, who organised a Beetle Drive. It was very noisy and enjoyable, with lots of laughs, and the winners were Pauline Wilkes and Marion Drinkwater. Thanks go to Kathy and Sheila.

In November our speaker was Louise Webber who lives in the village. She gave us a demonstration of 'wet felting' a craft she has been practicing for several years.

She explained that wet felting can produce felt from wool and other animal fibres. Warm soapy water is applied, then compression causes the fibres to hook together into layers of the hair placed at 90 degree angles into a single piece of fabric.

Louise brought along several of her pieces to show the variety of ideas she has for using the pieces. There were some very attractive scarves and pictures, and a very pretty bag. It was a very informative and interesting talk.

In December members and friends will be celebrating Christmas with a buffet. In January we will welcome Malcolm Busby who will entertain us with some 'Ghostly Tales'.

If you would like to join the W.I. or simply come to a meeting to see what it is like, please do come along. We meet on the second Thursday of each month in the Beeches, 7.30pm for 7.45pm, and new members are always welcome.

For further information contact: Glenda Preece 01638 780734
gjpreece@aol.com •

Burwell Museum needs Trustees & volunteers

Burwell Museum is looking for new Trustees to join the Board, and work with existing Trustees to oversee finance, policy and guidance. If you can attend regular meetings, usually six to eight a year, and want to assist in developing and directing the future of the Museum please contact us.

The Museum is a charity, and provides a glimpse of village life in the Cambridgeshire Fens. It is staffed by a part-time Curator, but is mainly run by trustees and volunteers.

Becoming a Trustee offers you the opportunity to support the community, learn new skills and enhance your CV.

We are also looking for new volunteers in all roles but especially to work in 'front of house' welcoming our visitors, and ensuring they enjoy their visit. If you can offer your time and are looking for an enjoyable activity get in touch!

If you are interested please contact Mel Worgan, the Museum Curator, for further details on Tel 01638 605544 or by e-mail on museum@burwellmuseum.org.uk or just call in •

Obituary: Lionel Neal

Lionel and his wife Nancy moved to Isleham from Chippenham 22 years ago in order for their taxi and minibus company to grow. Over the years Neal's buses have become a familiar sight in the village. As well as running the company Lionel also served the community, first as a District Councillor for a number of years, including 1992 to 1994 as Chairman. In 1996 he was elected to Isleham Parish Council where he served until May of this year. During this time Lionel worked hard for the interests of the village. He was a great supporter of, and had a great passion for, the new Community Centre and wished to stay on the Council until it was completed. He fulfilled that desire by seeing the official opening in May of this year.

Lionel served the Parish faithfully and was a great asset to the Parish Council with his knowledge of how Councils run and advice to the Chairman.

Lionel sadly passed away on Wednesday 11th November •

Gala 2016 is cancelled

Unless: village groups and individuals come forward to help plan and organise this most important event of the year. A day when everyone who wishes can either take a pitch or stall to make money for their own organisation or just enjoy a fun family day.

It has been said before, at this stage, that the gala is under threat but this year we are saying that it **WILL BE CANCELLED**.

Our first Planning Meeting will be on Monday 18th January 2016 and thereafter on the third Monday of each month.

EVERY village group, each CHURCH and INDIVIDUALS absolutely NEED to come forward between NOW and 18 JANUARY 2016 if they/you wish the gala to continue.

If you require a pitch or stall then it is essential that either you or a representative attends the 18th January meeting in order to make a provisional booking.

Shortly a list of vacant Committee Officers and duties will be published on the Beeches Notice Board, in the Co-op, the Post Office and in the next edition of the *Informer*.

If you are interested and would like to help in any way, ACT NOW and get in touch, either via FaceBook or by contacting myself on 01638 781175/07704996690. Margaret Davies

Ely Citizens Advice Bureau holds a drop-in at the library in Soham, from 10am til 12 noon on the 2nd and 4th Wednesday of each month. For free, confidential, and impartial advice for a range of problems – housing, employment, relationships, benefits, debt, consumer – drop in and talk to a trained adviser.

December 2015 Wednesday 9th

January 2016 Wednesday 13th and Wednesday 27th



OvenPad Cleaning Services

I will professionally and efficiently clean ovens, ranges, Agas, ceramic hobs, extractors, microwaves and BBQs.



It's a dirty job:
why not give me a call?
Please contact Paddy Kelly on
Tel: 01638 742703
Mobile: 0775 263 1343
Email: info@ovenpad.com
www.ovenpad.com

ANDREW MYSON

BUILDING AND GARDEN MAINTENANCE

Painting And Decorating
Floor And Wall Tiling
Gutter Repair And Clearance
Fencing
Garden Clearance

24 HALL BARN ROAD
ISLEHAM
CAMBS
CB7 9QZ

TEL: 01638 780680

MOB: 07775673480

a_myson@yahoo.co.uk



Sue Hart

BSc (Hons), S.R.CH, M.Ch.S

Podiatrist

Chiropodist

HPC Registered 12573

Home visits

Daytime and evening appointments

Home 01638 555187

Mobile 07710155409

susie.harty@googlemail.com

- 20 years' experience
- Corns/callus
- Ingrown toenails
- Nails & thickened nails
- Gait analysis/biomechanics/orthotics
- Footwear advice
- Verrucae
- Fungal infections
- Diabetic advice and treatments



Carpentry Services

Established 1970

For all General Carpentry
and Building Work
No Job Too Small

Grant Hounsome

34 Sun Street

Tel: 01638 780 358

Mob: 07801 950 627

merrymonk@tiscali.co.uk

carpentryservicesisleham.webs.com



Kitchens/Bathrooms
Doors/Windows
Interior. Exterior
Maintenance
Lodge Gables over
Boarded

STAR CURTAINS

25 years of expertise and craftsmanship

Come & buy direct from our factory

Beautiful fabrics ~ superb quality ~ great prices

Friendly & efficient service

www.starcurlains.co.uk

2B Swan Lane Business Park, Exning, CB8 7FN

Opening hours:

Mon to Thurs

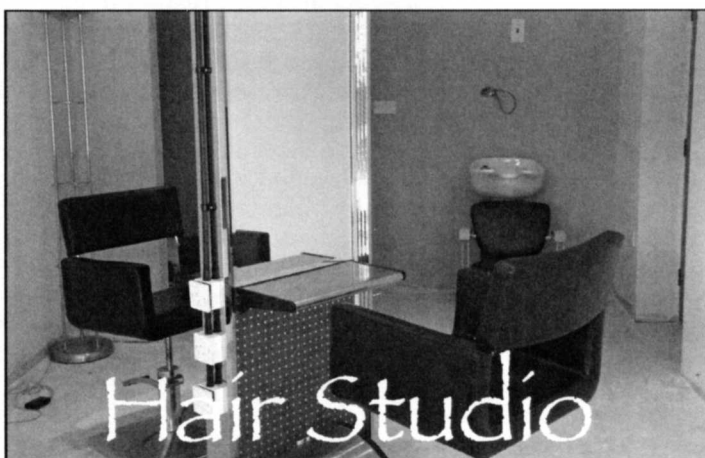
9.00 to 4.30

Fri & Sat

10.00 to 2.00

01638

578700



Hair Studio

53 Pound Lane, Isleham

Ample parking

Run by Gavin Baxter of **Rascals** unisex hair
salon in Newmarket for the last 34 years.

Gents, ladies and children:
cutting, colouring, perming etc.

Monday 9.15am-2.15pm

Wednesday 3pm-8pm

Saturday 2pm-6pm

By appointment only

07957708255 or Rascals 01638 664658

Everyone is welcome.

Isleham Twinning Association



So you're driving along one of the main approaches to Isleham and you see this sign. What does it mean to you? Well, it could be you remember a long time ago groups of French people dressing up and joining our Gala day parades.

Or recall Tricolours and Union Jacks flying, a brass band playing, children dancing around the Maypole, bunting, and speech-making in front of the Priory on the celebration of the 10th anniversary of our twinning.

Or could it be you have no knowledge or remembrance of all this at all and are wondering what it's all about, where Nesles (Pas de Calais) is and what our twinned village is like.

Well, the object of this article is to encourage you to come along with us to Nesles in the Spring of 2016 - to live *en famille* for the weekend and find out for yourselves.

We can tell you a little now. Nesles is 12 miles south of Boulogne, nestled in a small vale with a few white cows munching grass on the hill tops. This relatively unsophisticated village boasts its own little *mairie*, church, village hall and a medium-sized supermarket. It relies on agriculture, some local light industry, and of course Boulogne for employment.

However, the people are its greatest asset as you will discover if you accompany us on our next visit.

The French are a very tactile race, and as you might expect

on first meeting you'll be greeted with many enthusiastic handshakes or pecks on both cheeks. These greetings occur in the morning upon joining the group and possibly in the evening after a separation - they are very hospitable! You will enjoy their friendly, extended meal sessions, and as to communication you can always parry the thrust of their stumbling English with your own tortuous French, but will ever find that a smile or a gesture will prove to be the best translator, and a cementer of friendship.

Our visits to them there, as does our hosting here, usually include an outing of local interest (this year we took our guests on a two hour river boat trip in Cambridge) and possibly a couple of communal meals, with enough time to gain glimpses of the everyday family life of our ordinary French and English households.

We are most definitely in need of new members - young and old - who are prepared to host French people in their homes when our turn comes round, and to help with fundraising for the special activities involved in such a weekend.

Taking part in our visit to France next Spring would involve only your travel costs in getting there.

You may be able to help the Twinning Association along perhaps by featuring our 'French Connection' on Facebook or perhaps by Twittering away in 'Franglais', or perhaps you could run a stall on Gala day, or just be on standby for tea-making and chair-moving! All are welcome.

We are now in our 20th year of official twinning. We'd like to think that after having paid Nesles a visit you'd be able to see the sign again and say to yourself: 'Nesles, yes, nice little village, I've got friends who live there.'

Please contact: Terry Carter 01353 723094; Dave Clarke 01638 721640; or Bryan Wynne 01638 780802 •

MONKHOUSE CARPENTRY SERVICES LTD. Carpentry & Building

CITY & GUILDS QUALIFIED
FREE ADVICE & QUOTATIONS

For all carpentry and building work

KITCHENS

WINDOWS & DOORS

EXTENSIONS

RESTORATION

GENERAL MAINTENANCE

For a professional & reliable service

Darrell Monkhouse

36 Pound Lane, Isleham

Tel: 01638 781203 Mobile: 07808 569617

Isleham Cattery



Built and managed to Feline Advisory Bureau standards

All family size chalets

Inspections always welcome

Opening hours

Mon-Sat: 10:00-12:00 and 2:00-6:00

Sun and Bank Hols: 11:00-3:00

57 Waterside, Isleham, Cambs CB7 5SH

www.isleham-cattery.co.uk

01638 781367 - lorraine@isleham-cattery.co.uk

Hair Design

in the comfort of your own home

by Jayne

tel: 07831 149 001

LJS Kitchens and Carpentry

**Leighton Sheldrick
Carpenter & Joiner**

Leightonsheldrick7@hotmail.com

07984500535/ 01638 724873

Call us today for a free quote.



HIS 'N' HERS SCHOOL OF MOTORING

**DAVID EAVIS A.D.I. GRADE 6
& SARAH EAVIS A.D.I. GRADE 6**

- HIGHEST GRADE INSTRUCTORS BOTH
WITH 22 YEARS' EXPERIENCE
- PATIENT, RELIABLE, D.S.A. QUALIFIED
INSTRUCTORS
- STUDENT AND BLOCK BOOKING
DISCOUNTS
- COMPETITIVE PRICES

WWW.HISNHERSDRIVINGSCHOOL.CO.UK

TEL: 01638 781214

PROBLEM WITH A FLAT ROOF OR GUTTERING?



**REPLACEMENT OR
REPAIRS AND GUTTERING
MAINTENANCE.**

Contact LLOYD BENNETT

**Local Experienced Grade A Roofer - 25 Years
for FREE Advice & Estimates**

LJB ROOFING SERVICES

Call us now 01638 780452 Mobile 07599 124357



Woodpecker Joinery

**SPECIALIST JOINERY
MANUFACTURERS**

Established 1993

**DOORS • WINDOWS • STAIRCASES • SPECIALIST MOULDINGS
BUILT-IN FURNITURE • ARCHITECTURAL JOINERY**

**Built to your exact specification or by using our Design
and Build Service**

- Fitting Service Also Available -

**WE ALSO PROVIDE A GENERAL CARPENTRY MAINTENANCE AND REPAIR FACILITY
A TOTALLY PROFESSIONAL SERVICE WITH EXCELLENT QUALITY GUARANTEED**

FOR A FREE QUOTATION AND ADVICE

TELEPHONE: (01638) 781789 MOBILE: 07870 695466

EMAIL: woodpeckerjoinery@msn.com

43 Hall Barn Road, Isleham, Ely, Cambs, CB7 5QZ

Parish Councillors address list

**Derrick Beckett (Chairman):
Appleyard Farm, 1 Houghtons
Lane, Isleham. Tel: 01638
780476**

**Vanessa Bruyneel-Smith:
115 The Causeway, Isleham.
Tel: 01638 781708**

**Paul Chaplin: Jay Jay Lodge,
Waterside, Isleham. Tel: 01638
781745**

**Jeannette Malkin: 17 Little
London, Isleham. Tel: 01638
780283**

**Bob Mitchell: 10 Sparkes Close,
Isleham. Tel: 01638 780707**

**Clive Patterson: 21 West Street,
Isleham. Tel: 01638 780669**

**Glenda Preece: 94 The
Causeway, Isleham. Tel: 01638
780734**

**Richard Radcliffe: 45 Sun Street,
Isleham. Tel: 01638 780831**

**Pauline Wilkes: 6 Limestone
Close, Isleham. Tel: 01638
780640**

**Les Wightman: 3 Sun Street,
Isleham. Tel: 01638 781022**

**Diane Bayliss (Parish Clerk):
32 Mill Street, Isleham, CB7 5RY.
Tel: 01638 782687**

**Email: islehampc@btinternet.
com Website: www.isleham-
village.co.uk**

**Please note: the Parish Council minutes
will be updated in the New Year.**



The Beeches, Isleham Family Christmas Grotto & Disco 20th December 2015

Meet Santa from 4pm - 6pm

and receive a party bag!!

Grotto in the small meeting room,

admission free of charge

Disco from 5pm - 10pm

Adults £2.50

Children Free

Tickets are to be purchased from

The Beeches prior to the event

Call The Beeches on 01638 780097

NEW YEARS EVE PARTY

31 st DECEMBER 2015

7 PM TILL 1PM

With
MACCA

At THE BEECHES
ISLEHAM

£25 a TICKET INCLUDES BUFFET

FOR ALL TICKET SALES PLEASE CALL 01638 780097
OR POP IN TO THE BEECHES TO SECURE

CHURCHES

St Andrew's Parish Church

Welcome to St Andrew's, the Parish Church here in Isleham. All are welcome in this community of faith in Jesus Christ. St Andrew's is part of the Three Rivers Group, including the villages of Chippenham, Fordham, Kennett, Snailwell & Isleham. Do join us for worship and fellowship on Sundays and during the week.

Rector: The Rev'd Mike Banyard, The Vicarage, 24 Mildenhall Road, Fordham CB7 5NR Tel: 01638 721616 email: banyardmg1@yahoo.co.uk

Associate Priest: The Rev'd Sue Potts, The Vicarage, chippenham CB7 5PP. Tel: 01638 721662. Email: revd.sue@icloud.com

Curate: The Rev'd Duncan Dulais.

Licensed Lay Minister: Helen Banyard, Carol Taylor

WORSHIP

Sundays: The main service is at 9.30 am. Junior Church meets in the Social Centre. On the third Sunday of every month we worship together at an All Age Holy Communion service.

Monday: 9.15 Morning Prayer at 7 The Close, Kennett

Tuesday: 8.15 Morning Prayer, Social Centre Isleham

Wednesday: 8.15 Morning Prayer, Chippenham; 4.15 Evening Prayer Snailwell

Thursday: 8.15 Morning Prayer, Fordham

Friday: 8.30 Holy Communion (BCP) Fordham

Tuesday Coffee Morning 9am – 12 noon Social Centre

Fridays 6.30pm Choir practice. All welcome. Contact Mark Liversidge 01638 781696. 7.30pm Bell Ringing, beginners

especially welcome. Contact Ruth Ogden 01638 780646.

Churchwardens: Rob Savage 01638 780218 robert.savage@islehamchurch.org.uk

Tower Captain: Ruth Ogden 01638 780646 ruth.ogden@islehamchurch.org.uk

Choir Director: Mark Liversidge 01638 781696 mark.liversidge@islehamchurch.org.uk

Webmaster: Andrew Stephens 01638 781468/780229. For more information about the Three Rivers Group and St Andrew's, please visit our website at www.islehamchurch.org.uk •

Pound Lane Free Church

Pastor: Dave Hall (01638 781343 or 01638 780636, email pastor@plfc.org.uk)

Sunday worship: 11am and 6.30pm.

Celebration of the Lord's Supper: First Sunday following evening service and third Sunday following morning service. A crèche is available for babies to Year 3 during the morning service. Refreshments are served after the evening services, except the first Sunday of the month. Fellowship Lunches are served after the morning service on the third Sunday of the month.

Kingdom Kids (3 years–Year 3): 10–11.15am (Sue Thompson 01638 780030).

All Stars (Years 4–6): 10–11.15am (Suzanne Hall 01638 781805).

Covies (Year 7–18 years): 10am–10.30am (Steve Neale 01638 780717).

There is a hearing loop installed and signing for the deaf is available as well as Braille songbooks. We have a comprehensive Child Protection Policy and a CRB check has been carried out on all children's and young people's workers.

Mondays fortnightly: Music Mayhem: 9.30–10.30am (Sue Thompson 01638 780030) Preschool children during school terms. A fun time for your pre-school children – action songs, musical instruments and the ever-popular 'Sockeroo', followed by refreshments and a time to relax with friends whilst the children play. New members always welcome.

Tuesday: 18–30s: 7pm. (Suzanne Hall 01638 781805) Meeting at PLFC with monthly social events.

Wednesday: Fellowship (fortnightly) 2.30–3.30pm. (Church 01638 781343) Meeting on alternate Wednesdays and catering for the more mature in age. They enjoy meeting together for a Bible talk, spiritual songs and prayer. Various fun events and meals are also organized during the year. New members are always welcome. **Church Night:** 7.40–9pm. Bible study, prayer and fellowship. Age from mid-teens upwards.

Thursday: Coffee Morning: 10–11.30am. Turn up any time between 10 and 11.30am for free tea, coffee and cakes. Chat with friends and make new friends. Open to any age. Includes an eight minute 'In the News this Week' slot in the middle. **Covies Club Night:** Once a month, on the Thursday after the first Sunday of the month, 7–9pm

Friday: Women's Meeting (fortnightly) 10.30–11.45am (Sue Hall 01638 780636).

Saturday: Men's Fellowship (2nd Sat of month) 8am (Paul Rogerson 01638 781343).

Christianity Explored courses are run regularly – please ask for dates of next course.

For further information on any of the above, or if you would like to speak to Pastor Dave phone: 01638 781343 (Church Office) 01638 780636 (Pastor's Home) Email: pastor@plfc.org.uk; secretary@plfc.org.uk Web sites: www.plfc.org.uk; www.isleham.com

FARR

PAINTING AND DECORATING

Andrew Farr

14 East Fen Road,

Isleham CB7 5SW

Tel: 01638 780375

Mob: 07768 328387

Interior and exterior

Painting and decorating

Paper hanging

Commercial and

domestic

Over 30 years' experience



We want to say a huge thank you to the Co-op for allowing us to distribute leaflets via them this year, and to all the staff who came and helped us process boxes again. If you are one of the many friends who prepare a box or come and help us process boxes – thank you – you can be sure that your box will have brought joy to a disadvantaged child this year and shown them God's love.

Our Candlelit Carol Service is on Sunday 20th December at 6.15pm. Do come along and enjoy singing some of the traditional Christmas Carols and watch the children take part in sketches and a Nativity. The service will be followed by refreshments.

Christmas Day Service Friday 25th December 10.30am – you are warmly invited to join us in celebrating the birth of Jesus – the Light of the World. The service is followed by refreshments •

High Street Church

The Ark Project Isleham has been a centre of Christian witness for nearly a thousand years. People were inspired to build the Priory nine hundred years ago. Two hundred years later the Parish Church was built. Pound Lane chapel was constructed three hundred years after that and, following an interval of two hundred years, the present High St chapel was built.

During the last decade it became more and more obvious that this latter building is no longer suitable for the requirements of the present congregation. Parking is limited and the lack of internal space restricts church activities. We are very grateful, therefore, for the gift of a plot of land on the edge of the village which has enabled us to embark on the construction of a new church building.

Our vision is to have a Christian centre which provides an appropriate venue for worship and an attractive social meeting place; one which will be used by generations to come. The enterprise is called The Ark Project and, under God's guidance, it is being built using the skills we have within the membership.

The building is a timber framed structure, of green oak; designed to be sympathetic to the local environment. The actual building work is being carried out by a team of four church members assisted, when needed, by volunteers. Three other members are involved in the administration and planning aspects of the build.

The past few years have seen the building take shape. There are periods when little seems to be happening on site. This is because the team are in the workshop preparing the wood for the next stage of installation.

The first phase of the construction was in 2011 with the erection of the frame for the Junior Church rooms, dining area and toilet block. In the three years following, the main body of the church was fabricated and erected, insulation fitted and the oak door and window frames produced. The same period saw the use of eleven thousand bricks in the lower parts of the walls.

Before the pantile roof was laid, plywood ceiling panels were cut, treated with white, fire retardant paint and inserted between the oak purlins.

During the summer months this year the installation of the door and window frames was completed, larch feather-edge cladding fitted to the walls at the rear of the building and many of the joists inserted ready to support the upper room floors. In addition, more feather-edge cladding, this time in oak, has been fitted above the brickwork on the front of the building. Wood-wool panels have been inserted between the wall-posts and the first application of lime-putty render applied, giving the building a traditional medieval appearance.

At the time of writing the external doors have been constructed, ready for fitting and floors in the upper rooms are being laid.

One of the delightful features of the project thus far has been the interest shown by people who are not members of the church but who have gone out of their way to help. We are very indebted to these people. There is, of course, a large financial aspect to this project and we are very grateful to the church members and others whose generosity has enabled us to progress to this point without incurring any debt.

Above all, we give thanks to the Lord for His favour and goodness to us. *Terry Malkin*

We have lots going on in the week from book clubs to youth groups, groups discussing parenting teenagers to learning to drum or working with migrant workers, you could come along to Rendezvous, our group for those who are retired – there is too much to list. We also do great Sunday get-togethers at 10.30am and 6.30pm – the door is open. • Catch us on Facebook – High street church Isleham – or our web site www.highst.org.uk

SUNDAY SERVICES: All are welcome to our Sunday services throughout the year. Morning worship: 10.30am All ages are very welcome from the very young to the very old. The children have their own activities. Evening fellowship: 6.30pm A less formal service usually with opportunity for individual sharing. Come and hear about God's goodness! Tea, coffee and good conversation are available after both the morning and evening services •



KAREN'S GROOMING

*All your pet's
grooming requirements
on your doorstep*

01638 781791
07803 548573



Rothwell's
Carpet Cleaning

01223 832 928

www.Rothwells.biz

Carpet Cleaning

& Stone Floors, Upholstery, Rugs

A few points that make us stand out from the others,

Rothwell's has been in business since 1993.

We're an honest local family firm.

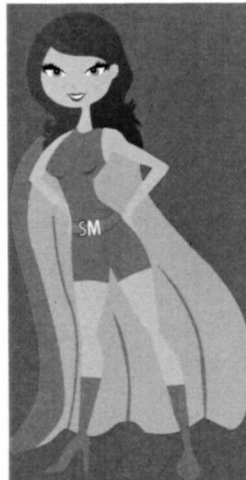
Our large truck mounted machines mean more cleaning & drying power for the best results possible.

Members of both the NCCA and TACCA.

We will move the furniture for a thorough clean.

100% satisfaction or it's FREE.

Call Oliver and Max Campbell for expert help today.



Calling all Supermums!

Are you a Supermum looking for success but needing flexibility around the children successful jobs don't allow!
Now is your chance to have it all!

Contact Emma Joy-Staines for a short video explaining HOW on Facebook or 07809244895

Beeches Survey Results

Thank you to every one who filled in our recent survey. The online questionnaire was promoted via mailing lists, social media and paper versions published in the October 2015 issue of *The Informer*, and was available at The Beeches reception. We received 70 responses by the closing date of 31 October 2015. Here is a summary of survey findings.

- 91% of respondents live in Isleham and a further 7% in the local area within five miles of our village.
- 66% use The Beeches at least once a month, and one in three makes use of the Beeches weekly. 7% have never used The Beeches.
- Around half have attended a private party or meeting and used the bar and cafe casually.
- Two out of five people have attended a special event such as the 1940s night, Ladies Night or Sportsmans Dinner.
- A third of people come to The Beeches for village clubs and societies such as Cubs, Scouts, WI or Isleham Gardeners, and one in five has attended a fitness class.
- The Beeches are doing a good job of serving the local community say nine out of ten, with 49% 'satisfied' and a further 39% 'very satisfied'. Only five were 'not satisfied'.

Suggestions for improvement include longer and more regular opening hours, fewer fitness classes in favour of more village events and ideas for further landscaping to make the exterior more visibly attractive. All these suggestions will be considered carefully.

Four people expressed a willingness to join a group to discuss future development of the Beeches: if anyone else is interested in this then please contact me at The Beeches or phone 07742 832300.

All the responses were entered into a draw, and the winners are as follows: 1st prize, a pair of tickets to the Beeches New Years' Eve party: **Vernon Place**. 2nd prize, a bottle of champagne **Clive Hall**. 3rd prize, a bottle of wine: **Sam Spillane**

Louise Quinn, Centre Manager



NOVEMBER - DECEMBER 2015

Monday –

- 10am – 11am Pilates
- 6pm-9pm Pilates

Tuesday –

- 4:00pm- 8pm Ballet/Cubs/Scouts

Wednesday –

- 9am -12 Busy Bees
- 9am -12 Bridge
- 10am -11:30am Needles and Natter
- 12-1pm Pilates
- 6:30pm – 7:30pm Hour of Power

Thursdays –

- 6pm-6:45pm Power Hoops
- 6:15-7:45pm – Yoga
- 7:45-8:45pm Your Body Class

Friday –

- 7pm-8:30pm Ballroom Dancing

Saturday –

- 9am -10am Hour of Power
- Cafe open from 9am until close event depending
- Sunday –
- Cafe open from 9am - close event depending

CONTACT LOUISE QUINN

* Tel:01638 780097 * Mobile:07742832300

THE BEECHES HALL & MEETING ROOMS HIRE RATES (prices are per hour unless stated otherwise)

The Hall 14.5m x 18.5m, wooden floor, 180 seated, 240 theatre seating

	Start	End	Business Groups/Companies	Non Profit Groups & Charities	Local Community Groups & Individuals
Mon-Fri	9am	6pm	£20	£15	£12
Mon-Thu	6pm	Midnight	£20	£15	£12
Friday	6pm	Midnight	£31	£20	£15
Saturday	9am	6pm	£28	£20	£15
Saturday	6pm	Midnight	£31	£25	£20
Sunday	9am	11pm	£23	£18	£14
Sat all day	9am	Midnight	£400	£300	£260
Sun all day	9am	11pm	£260	£240	£180

Meeting Rooms (2 rooms available, carpeted) 7.5m x 7.5m x 6m, 30 seated

	Start	End	Business Groups/Companies	Non Profit Groups & Charities	Local Community Groups & Individuals
Mon-Fri	9am	Midnight	£18	£13	£11
Saturday	9am	Midnight	£20	£15	£12
Sunday	9am	Midnight	£18	£13	£11
Sat all day	9am	Midnight	£190	£170	£150
Sun all day	9am	11pm	£180	£150	£130

Cafe is also available for hire separately. Kitchen Hire Rate £10/hr; Local Community Groups & Individuals free, to be confirmed at time of booking. Catering can be provided with any type of booking: if you wish to provide your own catering which the centre could have provided there will be a fee of £20. Corkage fee of £5 per bottle. Storage £5 per month. There is a permanent bar on the premises available for periods agreed at time of booking. **Projector:** (for Power Point etc): £10 inc VAT per day • **Laptop:** £10 inc VAT per day • **Flip-chart & Pad** £5 inc VAT per pad

All bookings must include set-up times. Full payment must be made prior to use. All figures shown include VAT at the prevailing rates. Please contact the manager if any clarification of charges is required. Party bookings have a refundable (pro rata) £50 deposit for accidental damage. Deposits: 25% cash or card deposit at time of booking. 50% deposit for exclusive centre booking (excludes changing rooms). Cancellation Charge: 7 days notice 100% of deposit retained, 3 weeks notice 50% of deposit retained. Seasonal Bookings: There is a surcharge for seasonal bookings, available on application. Bank Holidays in 2016: 22nd,23rd,24th,26th,27th & 31st December & 1st January. No bookings taken for 25th December. Discounts: (Full payment in advance) Block booking i.e. same room, every week at same day & time. 5% for 12+ bookings. Exclusive Bookings (excludes changing rooms): contact the manager for full details and prices.

Although the management endeavour to keep to listed rates, we do reserve the right to alter rates without notice.



For all your building requirements...

For every home renovation project, from home extensions, loft and garage conversions, alterations, carpentry, garden walls and patios.

As well as, Upvc, fascias, soffits and conservatories.

Call Alex or Glen for a free no obligation estimate on your building project...

01638 781679 or 07909 915 612 / 07833 017588

www.kingbuild.co.uk | info@king-build.co.uk

18 Malting Lane, Isleham, CB7 5RZ

Manufacturers & Suppliers of *Blinds & Awnings*

- Free Expert Measuring & Fitting Service

- Specialist Advice from Knowledgeable and Professional Staff

- Only Top Quality Materials & Components

- Well Reputed Local Company



1st FIESTA BLINDS

Studlands Park Avenue, Newmarket CB8 7EA

Telephone: 01638 665010

www.fiestablinds.co.uk



- Vertical • Venetian/Wood Slat • Roller • Pleated • Roman
- Velux • Woven Wood • Canopies • Awnings

13-15 Oxford Street, Exning, Newmarket, Suffolk CB8 7EW

Are You Avoiding The Dentist?

You are not alone.

British Dental Association says that 25% of the population suffer from some sort of anxiety before visiting the dentist.

Intravenous sedation can help you.

Do you:

- Have dental anxiety?
- Have difficulty getting numb?
- Dread your previous bad dental experience?

If you answered 'YES' to any of these questions,
Olive Dental Care can help you.

Call today on:
01638 577 031

www.olivedentalcare.co.uk

We also offer:

Free parking

Ground floor access

The latest technology



*Olive
Dental Care*



Cleaning Services • Cleaning Is Our Thing

Here at ShineTime Cleaning Services we pride ourselves on our high standards. All aspects of cleaning works are undertaken and no job is too small.

- Domestic and commercial cleaning
- Window cleaning
- Guttering, fascia and soffit cleaning
- Cleaning of conservatory roofs
- Office cleaning
- Pub and restaurant cleaning
- Builders clean/Sparkle Cleans
- Carpet/upholstery cleaning
- High level cleaning (IPAF Registered)
- Oven cleaning
- Patio cleaning
- End of tenancy cleaning
- Floor maintenance and restoration
- Garden maintenance
- Janitorial supplies

Robbie Scrivener 07530 573856

Shaun Lorello 07902 948985

shinetimecleaningservices@hotmail.com

Call us today for a free quote!



HOUGHTON'S CHRISTMAS LIGHTS DISPLAY

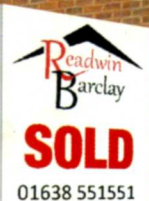
28th November - 31st December

43 WATERSIDE
ISLEHAM
CB7 5SH

Supporting EAAA

Registered Charity No. 1083876

We need you today
You may need us tomorrow



Total Peace of Mind

Local • Independent • Professional



SIGNS OF EXPERIENCE

These are the only two names you need to know.

If you are considering selling or letting your property.

Competitive fees and no hidden charges.

Contact us now to discuss your property.

Telephone: 01638 551 551

Email: enquiries@readwinbarclay.co.uk Website: www.readwinbarclay.co.uk

Email: enquiries@lodge-lettings.co.uk Website: www.lodge-lettings.co.uk

Office Address: Unit 6 Bellflower Crescent, Red Lodge, Suffolk, IP28 8XQ