

Isleham Informer

Issue 52 • August 2012

ed@islehaminformer.org.uk • 01638 780839 • www.islehaminformer.org.uk

Gala 2012: Hampered by damp



This year's Gala took place on Saturday 7th July and, although hampered by heavy rain showers, a large crowd enjoyed a fun family afternoon. The parade commenced at 1pm and was led by the Glenmoriston Pipe Band (right) and our Gala Royal Family (above). Gala Queen this year was Jenny Ruddock and she was accompanied by Gala Princesses, Lottie White and Ruby Christie, and Gala Prince Connor Forder. All four carried out their duties superbly and our thanks go to the PTA who carried out the selection process. Four floats joined the parade and the winning float was by Isleham Swimming Pool Association, with an inspired 'Treasure Isleham' theme. In second place were Isleham Under Fives and in third were the Cubs; they were also joined by the WI's float. The Girl Guides and the Soham Majorettes also joined the parade as walking groups.

This year the competition Marquee was bigger than ever and drew a

record number of entries. With such talent in the village we only expect this to get bigger in future years. We would like to take this opportunity to thank this year's judges.

The rain meant that the fun races could not take place; however, the dog show was a great success. Our thanks go to Jackie Palmer for organising this event and we would also like to thank all the owners for looking after their dogs on the field. The Grand Draw was also a great success but the 'Wheelbarrow of Booze' prize remains unclaimed. The winning ticket was yellow 225 and if you have this ticket please get in touch.

Refreshments in the village hall were provided by Newmarket and District Youth for Christ, and entertainment was by

the Isleham School Band. There was also an art display by the school, sponsored by Pauline and Bryan Wynne, as well as the children's writing competition entries. Throughout the day, photographs were taken by Vernon Place, and a comprehensive display can be seen in the Post Office, where orders can be placed and purchased.

The Gala Committee would like to thank the many local companies and individuals who donated time, sponsorship and prizes to the Gala. The Gala would not take place without their continued support. We would also like to thank the Parish Council for the use of the field and the village hall, and their financial support. We do not aim to make a profit but to provide local groups with an opportunity to promote themselves and raise money for their funds.

This year's Gala AGM takes place 8pm, Monday 15th October in the Griffin and more details will follow in the next edition of the *Informer*.

I hope everybody who attended the Gala had an enjoyable, if wet, afternoon. We really appreciate your support and we can only hope for better weather next year.

Steve Rust (Chair) 01638 780104



All Gala photos by Vernon Place

W.R. PARR

Antique Furniture Restorers

Established in Cambridge 1928



Station Road, Isleham

01638 780080

www.furniture-restored.co.uk

All aspects of furniture restoration and repair work.

- Marquetry
- Turning
- Veneering
- French polishing
- Carving
- Upholstery

**If you need local accommodation
for visiting family or friends**

For details contact:

gill@sunsetely.com

www.sunsetbb.co.uk

01638 780549

SunsetBed&Breakfast

6 Station Road, Isleham, Ely, Cambs CB7 5QT

From the Editor

To misquote from *Wild Child* a track on Lou Reed first solo album: "And then we spoke of the rain - always back to the rain." Such is our obsession with the weather. Especially just at the moment: "When will it stop raining?" "When will we finally get a summer?" Well, we had summer in March. Don't blame me if you didn't recognise that as the only opportunity you would have this year to get the barbecue out!

It's fantastic that so many people were able to get at least something out of the Gala this year, despite Mother Nature's best efforts to keep everyone at home with a cup of cocoa. It's a shame that after so much intense planning and work by so many that we are unable to control one crucial feature. One day...

One not entirely flippant suggestion has been: "Maybe we should consider moving the Isleham Gala to March." Well, yes. But if there's one thing you can count on with the English weather it's that you can't count on it. Even to be unreliable.

Still, at least I am again able to water that swamp I call a lawn. Some of the frogs living on it were looking a little parched.

We apologise for the absence of Joyce's Corner this time: Mrs Drayton is somewhat under the weather (and there's such a lot of it to be under!). We wish her the speediest of recoveries.

Ed Mayall

Contents

- | | |
|---------------------------|-------------------------|
| 1 Gala | 18 Gardeners |
| 2 From the Editor; | 19 Isleham Society |
| Contacts; Next Issue | 20 Jubilee Celebrations |
| 3 Village Notes; Diary | 22 Churches' News |
| 5 Village Clubs | 24 Leslie Audus |
| 7 Police News | 25 WI |
| 8 One Way | 26 From the Vicar |
| 10 Skate Park; Angling | 28 Parish Council News |
| 11 Graham Wells; Treasure | 29 Gala Results |
| Hunt | 31 Bowls |
| 12 Community Centre | 32 The Queen |
| 15 IPC Annual Report | |

CONTACTS:

Editor Ed Mayall T: 01638 780839

E: ed@islehaminformer.org.uk

Features Glenda Preece T: 01638 780734

E: gjpreece@aol.com

Advertising Kelvin Morgan T: 01638 781384

E: advertising@islehaminformer.org.uk

Distribution Richard Turner T: 01638 780965

Published by Isleham Parish Council

Printed by Urban Design and Print Ltd.

(<http://www.urbanprinting.co.uk/>)

NEXT ISSUE: Published 1st October 2012. The copy deadline for all editorial and advertising is 9th September 2012.

DISCLAIMER: The *Informer* would like to point out that we have neither tried nor tested all of the products and services advertised in these pages and therefore cannot accept responsibility for the veracity of any claims made.

FARR

PAINTING AND DECORATING

Andrew Farr

**14 East Fen Road, Isleham,
Ely, Cambs CB7 5SW**

Tel: (01638) 780375

Mobile: 07768 328387

Email: andy.farr@live.co.uk



Interior and exterior
painting and
decorating.
Paper hanging.
Commercial and
domestic.
25 years experience.

Free estimates.

VILLAGE NOTES

Senior Holiday Club*

*why let children have all the fun!

August 21st–23rd daily from 10am–4pm at High Street Church.

Lunch provided and local transport available plus a variety of activities to choose from. Cost per day £4 or £10 for all three.

Booking forms are available from the Co-Op.

For more details re booking your place, contact Kathryn 01638 780652 or the Church Office 01638 780985.

Chippenham Women's Institute

Xmas Craft Fair November 10th at Chippenham Village Hall, 10am to 4pm.

Stalls available for £8. Anyone interested please contact Sue Tyler on 01638 780686 or susantylor123@btinternet.com.

Consultation on Cinema Provision in Ely

As you will be aware, East Cambs District Council has been gathering views on how the district should grow and develop. Public consultation on the Ely Masterplan revealed strong support for a new cinema in Ely so we are now seeking views from residents of the district on where a new multiplex cinema could be located within Ely.

The consultation will be open for 3 weeks until Monday 6th August 2012. To save resources, we prefer that responses are made online via <http://www.surveymonkey.com/s/elycinema>. Alternatively questionnaires can be printed from East Cambs web site (<http://www.eastcambs.gov.uk/consultations/ely-cinema-consultation>) and returned to either: The Grange (either reception or Forward Planning), Ely Library or The Maltings.

Dates for Your Diary

Let us know if there is anything you would like included here for future issues.

Every Tuesday Coffee Morning at the Social Centre 09.00–12.00

First Sunday Isleham Community Skate Park car wash. 10.00–13.00

August

Thursday 2nd	Mobile Library	Church Street	14.15–15.00
		Mill Street	15.05–17.00
Saturday 4th	Isleham Gardeners Cream Teas		14.30–17.00
	Social Centre		
Sunday 5th	Skate Park Car Wash – Priory		10.00–13.00
Sunday 5th	Sponsored Bike Ride for BECKen		
	www.becken.co.uk/01638_780257		
Monday 6th	Isleham Parish Council		19.00
Thursday 9th	WI		19.30
Friday 17th	Mobile Library	Church Street	09.30–10.10
Saturday 25th	St Andrew's Summer Social		10.00–17.00
Sunday 25th	St Andrew's Summer Social		13.00–16.00

September

Sunday 2nd	Skate Park Car Wash – Priory		10.00–13.00
Monday 3rd	Isleham Parish Council		19.00
Thursday 6th	Mobile Library	Church Street	14.15–15.00
		Mill Street	15.05–17.00
Monday 9th	INFORMER DEADLINE		
Thursday 13th	WI		19.30
Tuesday 18th	Isleham Gardeners		19.30
Thursday 20th	Isleham Society		19.30
Friday 21st	Mobile Library	Church Street	09.30–10.10

INFORMATION

Thursday bus from Isleham to Ely Market

Circular route: 9.15am Limestone Close – Malting Lane – Beck Road – The Causeway – East Road – Sun Street – Church Street – West Street – Hall Barn Road – Fordham Road – arrive Ely 10.00am; Return 12.00 noon. Fares: Adult Bus Pass Holders £2.50 Return Adults £5 Return

Our buses are accessible to all; however, to improve customer service, wheelchair users and those with small children requiring booster seats are advised to contact Ely/Soham Dial-a-Ride in advance: Ely Soham Dial-a-Ride 01353 661161 *This service is financially supported by Isleham Parish Council.*

Mobile Library

1st Thursday of the month:	Arrive	Depart
Church Street	14.15	15.00
Mill Street	15.05	17.00
3rd Friday of the month: Church St	09.30	10.10

Child Health Clinic

Soham Child and Family Team Child Health Clinic will be in Isleham Village Hall with the Tea & Toast group on the second and fourth Thursdays every month from 10–11am. For more information phone Naomi Greener on 01353 624411.

Useful phone numbers

Emergency for Police, Fire, Ambulance 999
 Police (Non-emergency) 101
 Accident & Casualty (Addenbrooke's) 01223 217118
 Addenbrooke's Hospital (Cambridge) 01223 245151
 Newmarket Hospital 01638 564000
 West Suffolk Hospital (Bury St Edmunds) 01284 713000
 Staploe Medical Centre (Soham)
 - Appointments 01353 624121
 - Prescriptions & Dispensary 01353 727695
 - Enquiries, Home Visits, Emergencies 01353 624123
 Minor Treatment Centre, Ely 01353 656675
 NHS Direct (for advice) 0845 4647
 Electricity Emergencies 0800 7838838
 Gas Emergencies 0800 111999
 Anglian Water Leaks 0800 771 881
 - 24 hour 0845 714 5145
 Social Services - office hours 0345 0455202
 - out of hours emergency 01733 561370
 Refuse Collection 01353 665555
 RSPCA 07599 522716
 - Cruelty line 0300 1234 999
 Citizens Advice Bureau Ely 0845 130 6442
 Mildenhall 01638 712094
 Newmarket 01638 665999
 District Councillor (Derrick Beckett) . . . 01638 780476
 Isleham Village Hall (Diane Bayliss) . . . 01638 781687
 Parish Council (Diane Bayliss: Clerk) . . 01638 781687
 Member of Parliament (Jim Paice) . . . 01954 211450



The Rising Sun

Sun Street, Isleham. Tel: 01638 780471

FOOD SERVED

Friday and Saturday 12 noon to 2pm
and 7pm to 9pm
Sunday 12 noon to 2pm

ENTERTAINMENT

- AUGUST -

Friday 4th: Halo

Friday 10th: Lewis Mokler

- SEPTEMBER -

Saturday 1st: Men You Might Know

Date to be Confirmed: Quiz

Friday 28th: Karaoke with Clive

OPENING TIMES

Monday: 7pm to Close

Tuesday to Sunday: 12 noon to Close



Kids' Play Area

Village clubs: information

CLUB	CONTACT	TEL	DAY/DATE	TIME	PLACE
Angling Society	Ivan Houghton	01638 780333			
Board Games	Alison Young	01638 780351	Last Thursday	2–5pm Sept–June	High St. Church
Book Club	Doreen Spiers	01638 780783	2nd Friday	2pm	Social Centre
Brownies	Caroline Zwierzchowska-Dod	07766 336694	Thursdays	6–7.15pm	Village Hall
Busy Bees	Kelly Chawner	01638 781098	Tuesdays	9.30–11.30am	Village Hall
Craft Club	Hazel Thompson	01638 780633	Tuesdays	1.30–4pm	Social Centre
Cubs	Angela Dann	01638 781947	Tuesdays	6.15–7.45pm	Village Hall
French Conversation	Francine (all levels)	francine@the waytofrance.com	Monday	6–7.15pm	1 Mill St
Isleham Gardeners	Jenny Hodd	01638 780729	3rd Tuesday	7.30pm	Village Hall
Isleham Society	Vernon Place	01638 780449	3rd Thursday	7.30pm	Village Hall
Paper, Patch & Sew	Victoria Rattle	01638 781301	Saturday Bi-monthly	10–4pm	High St. Church
Tea & Toast	Emma Champion	01353 727188	Thursdays	9.15–11.30am	Village Hall
WI	Glenda Preece	01638 780734	2nd Thursday	7.30pm	Village Hall
Yoga	Jill Bercovici	01638 510801	Thursdays (term-time only)	9.15–10.15am	Bowls Club

Sure Start Children's Centres



What's on for FREE for families with children under five at Soham Children's Centre, next to Weatheralls Primary School

Blissful Babies Every Tuesday 1.30–3.00pm and Friday 9.30–11.00am. A relaxing sensory experience for babies with lights, music, toys and more. To book your place and more information call 01353 727188

Breast Friends Breastfeeding support group meeting every Tuesday 11.30am–12.30pm. For new and pregnant mums. Pop in for some free advice and support from a Lactation Consultant.

Baby Clinic Every Tuesday 9.30–11.30am. Weigh the baby and have tea and a chat with the Health Visitor about any worries or concerns.

Soham Family Fun Saturdays 10am–12noon fortnightly from 21st January. At Ross Peers Sports Centre, Soham. A free play and chill session for families with children under five. Just turn up.

Time Out Tuesdays For parents under 25 years. Every Tuesday 9.30–11.30am. Come along and make friends, have a chat and get support and information.

Isleham Tea & Toast Every Thursday at Isleham Village Hall, 9.15–11.30am. Pop along for some tea and toast, a play session for the under 5s and a chance to meet other parents.

Dig It A chance for you and your children to learn how to grow your own fruit and veg on a Soham allotment. Every Wednesday 9.30–11.30am. Meet at Soham Children's Centre. Ring to book a place.

For more information call us on 01353 727188

sohamchildrenscentre@cambridgeshire.gov.uk

www.cambridgeshirechildrenscentres.org.uk

*St Andrew's Church
Social Centre*

Summer Social

**Saturday 25th August
10am to 5pm**
**Sunday 26th August
1pm to 4pm**

**GRAND DRAW
4pm
Sunday**

**CREAM TEAS
TREASURE HUNT & GAMES
GRAND DRAW • TOMBOLA
BOOKS • CRAFTS
JAMS • PICKLES
& MUCH MORE...**

All welcome to join the fun!



We're not in Kansas... 17.44 on 18th July 2012: Bowers Lane becomes a river, and a tornado (!) forms over The Causeway.

Mildenhall Monumentals

We offer a sympathetic, understanding service creating unique memorials made carefully by qualified fine artists and craftsmen with over 30 years' experience.



**Additional
Inscriptions
Cremation Plaques
Cleaning and
Restoration
Granite and
Natural Stone
Benches**

**Garden Ornaments, Water Features,
House Plaques, Sundials...**

**For our free brochure call:
01638 715525**

**www.mildenhallmonumentals.co.uk
Southgate Avenue, Mildenhall IP28 7AT**

Pooley Bendall Watson SOLICITORS

For a friendly and professional approach

- Domestic & Commercial Property
- Family & Matrimonial Matters
- Wills, Probate, Trusts & Tax
- Company & Employment Law

2 Three Cups Walk, Fore Hill, Ely Cambs CB7 4AN
Tel: (01353) 666075 Fax: (01353) 666162
Email: info@pbw.uk.com

Also at: 4b Church Street, Isleham, Cambs CB7 5RX
Tel: (01638) 780170 Fax: (01638) 780190

P B & W Solicitors LLP is a Limited Liability Partnership, trading as
Pooley Bendall & Watson Solicitors.

Police News

Scaffolding poles stolen

POLICE are appealing for information after metal fencing posts were stolen in Isleham.

The scaffolding poles were taken from the recreation ground in Mill Street between 8.45pm on Wednesday, 20th June 20 and 10.30am the following day.

PC Rob Savill, investigating, said: "The site is about four acres and the fence surrounds a sports field, the village hall and village hall car park. The fence is about four feet high and the offenders have removed the sections of the fence near the car park. I would appeal to anyone who saw it being stolen, or has any information to contact police."

Anyone with any information should call PC Savill on 101 or Crimestoppers, anonymously, on 0800 555 111.

Issued by Sarah Redman on 29/06/2012 15:10:24

Elderly people targeted in distraction burglaries

POLICE are appealing for information after three distraction burglaries over two days in South Cambridgeshire and East Cambridgeshire.

In the latest incident three men tried to distract an elderly woman at her home in Littleport. The men, claiming to be from the 'gas board', called at her home in Upton Place, at 7.50pm on 20th June. They asked to turn the gas off as there was a problem in the area, one of the men went through to the kitchen while the other two stood outside. Nothing was stolen. The men left in the direction of Parsons Road when neighbours chased the men off. The first man is described as white, about 6' and slim. He had black hair and was wearing a blue shirt. The second man was white, about 5'6", with brown hair and was wearing a brown suit. The third man is described as white and smartly dressed.

A further two incidents happened in South Cambridgeshire. The first in Butts Green, Whittlesford, at 10am on 19th June. A man knocked at the home of an elderly couple asking for a pen and paper. While they searched for a piece of paper the man left, the couple later noticed two handbags were missing and money had been stolen. The man is described as white, between 16 and 20, 5'11" and was wearing blue bottoms with a white stripe, a white tracksuit top and white trainers.

The second incident happened shortly after 10am in Fincham's Close, Linton, on 19th June. An elderly man opened the door to a man claiming there had been an explosion and water needed to be flushed in his pipes. The victim let him into his house but was suspicious, when he threatened to call the police the man left and nothing was stolen.

Detective Inspector Ian Simmons, who is investigating, said: "All of these offences are targeting vulnerable people and are despicable crimes. I would urge the community to look out for their elderly neighbours, be vigilant and report any suspicious behaviour."

Anyone with information should contact DI Simmons on 101 or Crimestoppers, anonymously, on 0800 555 111.

Issued by Sarah Redman on 21/06/2012 12:33:45



*Lyn Kiernan and her team extend
a warm welcome to you at their*

UNISEX HAIR SALON HAIR 2000

Ladies', gentlemen's and children's hairstylists

- **Established in Cambridge for 30 years!**
- **Competitive prices**
- **Experienced stylists**
- **OAP special rates on Mondays and Tuesdays**
- **We offer a wide range of perms, colours, hi-lights, low-lights, cutting and styling**
- **Cut & blow-dry from £23.50; perms from £35**
- **Lyn on Wednesdays**
- **Marion, Carla and Hayley on Saturdays**

**Call in and see us at
4 Church Street, Isleham
or phone 01638 780800**

FED UP PAINTING YOUR ROOFLINE?

Does your roof suffer with any of the following?

**Flaking paint • Rotten timbers • No ventilation
Blocked or leaking gutters • Nesting birds**



STOP!

**Replace it now and prevent
expensive damage to your roof**

Fascia • Soffits • Cladding

Full replacement - no capping over

Ventilation • Re-cement of gables

Guttering • Down pipes

PROJECTS 4 ROOFING

CALL NOW for your FREE, no obligation quotation - valid for 12 months

01638 507730

www.projects4roofing.co.uk/roofing-solutions/roofoine





Cat Care by Cat Lovers

**Built and managed to
Feline Advisory Bureau standards
All family size chalets
Inspections always welcome**

Opening hours

Mon-Sat: 10:00-12:00 and 2:00-6:00

Sun and Bank Hols: 11:00-3:00

57 Waterside, Isleham, Cambs CB7 5SH

Web: www.isleham-cattery.co.uk

Tel: 01638 781367

email: lorraine@isleham-cattery.co.uk

MILL GARAGE

***Servicing and Repairing
All Makes and Models***

- ✓ Auto Electrics and Diagnostics
- ✓ M.O.T Preparation and Testing
for class 4,5,7 and HGV
- ✓ Engine and Gearbox rebuilds
- ✓ Cam Belts fitted from £59
- ✓ Full Service from £79

**FREE PICK-UP & DELIVERY
24HR RECOVERY & HOME START SERVICE**

**12 Ely Road, Prickwillow
Tel: 07850 191 870
07909 523 116**



Did you get a leaflet through your door, but forgot to go? Did you already have something else planned? Did you think it just wasn't for you? Don't worry! You may have missed hearing Roger Carswell live but the message remains the same at Pound Lane Free Church every Sunday morning and evening; there is One Way to receive forgiveness for your sins, and be saved for eternity, and that is by the cross of Jesus Christ.

Of course, if you didn't go you missed a lovely series of events (you can download the messages on MP3 at www.oneway2012.org.uk/downloads). Roger spent two evenings interviewing a couple of men whose faith in Jesus empowers their life every day. Richard Todd (below), Head Gardener at the beautiful Anglesey Abbey gardens, and John Mosey, who tragically lost his daughter in the Lockerbie air disaster, and has spoken at international Memorial services. Unfortunately John's wife became ill, and he was unable to leave her and travel from his home in the Lake District, so technology to the rescue; the interview was carried out over Skype, with John's face on a big screen!



Vernon Place



The Pound Lane Coffee Morning was a Roger special, and on the Friday afternoon Roger hosted a Yorkshire Tea – a cup of the brew of that name, along with cakes, including Yorkshire Fat Rascals (a kind of scone); and Yorkshire Parkin (ginger and treacle cake). Both events were occasions for Roger to speak to people about

the Saviour he loves, and so wants everybody to know.

Saturday was the occasion for a Men's Breakfast at Pound Lane, a feast of Full English, followed by the Gospel of Jesus Christ in a men-only environment. And in the afternoon a barbecue at the Priory, with craft stalls, and a bouncy castle. The weather was amazing – it didn't rain! However, it was windy, and the Priory made a wonderful shelter for the stalls and visitors. Again Roger spoke, and was entertaining and thought-provoking, as he encouraged us all to think about ourselves as lost sheep, in need of a shepherd to find us and carry us home.

Roger preached at the Fathers' Day Family Service on the Sunday morning, reminding fathers of the responsibilities and the gift of being a father under the authority of God the Father. In the evening he preached again, as a final encouragement to consider Jesus; who He is, and what He did for us.

If you would like to know more about Jesus, even if only to satisfy your curiosity, please join us at 11am on Sunday mornings, and 6.30 on Sunday evenings, where you will be made very welcome. Full details about our weekly events and times are on the Churches page of the *Informer*. See you soon!

Sue Thompson

OvenPad Cleaning Services

I will professionally and efficiently clean ovens, ranges, Agas, ceramic hobs, extractors, microwaves and BBQs.



It's a dirty job:
why not give me a call?
Please contact Paddy Kelly on
Tel: 01638 742703
Mobile: 0775 263 1343
Email: info@ovenpad.com
www.ovenpad.com

LOOKING FOR A COMPETENT ROOFER?

Professional Roofing Services include:

Slates and Tiles • Flat Roofs • RubberBond EPDM

New Roofs and Repairs • Insulation • Ventilation • Solar Panels

Fascia and Soffits • Cladding • Gutter Clearance



Proud members of
NFRC and Competent
Roofer schemes.

All works underwritten
with insurance backed
guarantees.

PROJECTS 4 ROOFING

CALL NOW for your FREE, no obligation quotation - valid for 12 months

01638 507730

www.projects4roofing.co.uk/roofing-solutions



KARMA FARM

8 Fen Bank, Isleham

Tel: 07900 961217 / 01638 780701

- Naturally grass- and forage-fed beef
- 20 years selling direct from the Farm

New camp-site now open – see our website

www.karmafarm.co.uk

Isleham Community Skate Park



Well we managed our 25 mile sponsored bike ride on Sunday 27th May. It took 7 juniors and 2 adults 3 hours and 20 minutes to complete. We raised £605.00: thank you to everyone who sponsored us.



Thank you also for the donation of £150 from everyone who attended Limestone Close Jubilee Party: what a wonderful surprise!

Pauline Dunbavin

Isleham Angling Society

Season 16th June 2012 – 14th March 2013

Senior Matches

12th August 2012
16th September
14th October
11th November
9th December
13th January 2013
10th February
10th March

Junior Matches

19th August
9th September
30th September
21st October
18th November
16th December
20th January 2013
17th February
10th March

This season's permits can be purchased from:
Isleham Post Office

Bussens & Parker, Mildenhall

Ivan Houghton. Telephone 01638 780333

Shane Dunbavin. Telephone 01638 781179

Price: Adult £10

OAP £5

Junior £2

The AGM will be held on Wednesday 24th April 2013 at a venue to be arranged.



HIS 'N' HERS SCHOOL OF MOTORING

DAVID EAVIS A.D.I.
& SARAH EAVIS A.D.I.

- BOTH INSTRUCTORS OVER 20 YEARS' EXPERIENCE
- STUDENT AND BLOCK BOOKING DISCOUNTS
- PATIENT, RELIABLE, D.S.A. QUALIFIED INSTRUCTORS
- COMPETITIVE PRICES

WWW.HISNHERSSCHOOLOFMOTORING-

CAMBRIDGE.CO.UK

TEL: 01638 781214

P.J.Carrington Gas Heating and Plumbing Services

Servicing and Installation
Domestic Natural Gas L.P.G.
Boilers and Appliances
Part 'L' Heating Efficiency
Gas Fires

Underfloor Heating
Mobile Park Homes, Leisure Vehicles, Boats
Unvented Domestic Hot Water Systems
Landlords Certification

Bathrooms, Wet Rooms
Kitchens
Fully Certified
Fully Insured
No Job Too Small!

T: 01638 781790

M: 07533 172539

E: carringtonpj@live.com

W: www.pjcarringtonheatingandplumbing.co.uk



ANGLIA GAS & ELECTRICAL SERVICES



Sales • Service • Repairs • Installations

NG/LPG Gas Boiler/Central Heating Systems

NG/LPG Gas Appliances/Dual Fuel Appliances

NG/LPG Landlord Safety Checks

NG/LPG Residential Park Homes/Caravans

Electrical Appliances/Portable Appliances Testing

Essential Electrical/Plumbing Maintenance

Contact: Jim Perry Phone/Fax: 01638 741432

Mobile 07768 856456

email: jimperryages@ntlworld.com

**68 Isleham Marina
Fen Bank
Isleham
Cambs CB7 5SL**



Mark Goldsack, Graham Wells and Ivan Cox take a seriously well-earned breather after the Gala back in the days when it didn't rain quite so much...

Gala Day was different this year and not just because of the rain. The team were missing a much loved, long term committee member in Graham Wells.

Remembering Graham

Good fun and a Golfer
Reliable, Respectful, Responsible
Approachable and friendly
Hardworking, Honest, Helpful
Active in the community
Motivated to succeed

Willing, Worked hard - always
Enthusiastic, Efficient, Effective
Laughed a Lot and Loved many
Supportive, Self motivated, Successful, Such a
Sense of humour

Missed so very much.

Barbara Murfitt, Isleham Gala Committee Member

Isleham Family Quiz Walk

Take part in this all family quiz,
 by taking a walk
 round the village to answer the
 30 Quiz questions for
 August Bank Holiday Sunday!



30 Quiz Clues to explore Isleham:

The "Treasure Hunt" starts from St. Andrew's Church.

Number and write down all the answers on a separate sheet of paper from 1 to 30 plus answer the tie breaker question. Write your name and contact telephone number on the back of the sheet of paper and hand in together with the entry fee £2.00 at St. Andrews Social Centre, before 2pm on Sunday 26th August. (The winner will be announced at 4pm) All the answers can be found without leaving roads or pathways, there is no need to enter any private properties.

All clues in *italics* are anagrams.

Tie Breaker:

How many paces did it take the quizmaster to walk around the the Isleham treasure hunt track, starting and finishing at St. Andrews Church Lych Gate?

1. What month did Elizabeth, daughter of John & Ann die?
2. Turn left in *Screech Truth*
3. Turn into *Tense Ruts*
4. Where can you watch the Barclays Premiership live?
5. Considered lucky by some, it can be found next to which house number?
6. A cross helps support this building, what's the house called?
7. He may have carried the shield for a knight and later been known as the local leader of a village, but what device now carries his title?
8. Turn into *Weirdest Kean Band Fan*.
9. Once there was a door, now blocked, what letter can you see on the fence in front of it?

Turn right onto the public footpath . . .

10. What is the 7 letter name on the triangular lid?
11. Who orders that dogs must be kept on leads?

Turn right . . .

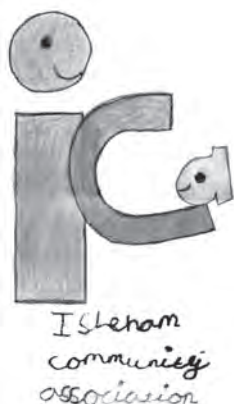
12. Carry on past *Degassing Coldhord*

Ahead and follow the footpath round to the right.

13. Which house number has the decoration that could have involved the owner getting very drunk?
14. Head up *Chateau Yews*.
15. Three Qs in a row are to be found on what
16. He still has his pipe but what do you think he has lost?
17. When was this timepiece made?
18. What number would you ring if you wanted one of these seats in your garden?
19. Turn left in *A Bedrock*.
20. Would the Queen have visited here a few weeks ago?
21. Six hanging baskets could decorate this house, what is its number?
22. Turn into *Gentian Mall*.
23. How much would you be fined for a pooch pooh?
24. Should this sign have the skull and cross bones above it, what does it say?
25. When was this educational institute built over 100 years ago?

Head for *Prickwillow* . . .

26. These canines help rescue travellers in mountainous regions, to which house do they give their name?
27. An ancient South American people now 'guard' which house?
28. Turn into *Creche Thrust*.
29. Who made this device to quench your thirst?
30. How much in total for one scone & a cup of tea at the Social Centre on Sunday August Bank Holiday weekend?



Isleham Community Centre

One of the busiest and best months to date?

Whilst the weather has been shocking, the progress made by the ICA and Parish Council since the last Informer has been terrific with the result that we are currently still on track for an autumn build start. Firstly we received the fantastic news that we have

been successful with two major grant applications. The Football Foundation have agreed, subject to our formal acceptance of standard terms and conditions, to a grant of £152,000. This was closely followed by the news that we have also been awarded £50,000 by Sports England. The level of grant funding being applied for would not have been available to simply repair the existing buildings. This means that on the monetary count we are on track. Given further successful further fund raising, donations and grants we hope to be able to instruct our main contractor to commence the build in September.

It probably came as a shock to all of you (it certainly was for me) to see the size of the archaeological dig the Oxford Archaeology team carried out during May, with quite a few large trenches spread over the build site, but



all was restored to a reasonable finish within 3 – 4 days. Sorry no treasure was found so we are still in need of the grants and donations. The archaeologists may make further investigations when the footings are being dug.

The soil surveys to test drainage and foundation requirements also took place during May with very little disruption. They seemed to be on site and finished very quickly.

Where we are is just the end of the beginning and not the beginning of the end! All the legal issues relating to the management of the new centre are being considered jointly by the Parish Council and ICA management committee. We are, as always, looking for additional help, so if you are willing to put yourself forward, for possible inclusion in any aspect of centre management please contact Mark Goldsack for an informal, no obligations discussion.

The busy period of activity then concluded with the Third, and most successful to date, Festival Weekend. The weather did its very best to dampen spirits but Isleham folk are much stronger than that! On Thursday 5th July we held the second 'Isleham's Got Talent' evening, which proved to be another very special night. Wonderful singing, dancing and gymnastic



Photos of Festival by Clive Patterson

displays graced the superbly decorated marquee, before an audience of over 220 people. Those taking part ranged from 7 years old through to 10 times that age, but all were rewarded with massive appreciation from the audience, and this year with some extremely complimentary comments from our Panto Crew, who not only acted as Guest judges but also put on some great performances.

Friday evening saw the largest Ball to date with 250 diners enjoying a well-prepared four-course meal. The Other Commitments dance band and a five table charity casino then commenced to take everyone into the happiest of party nights, but not before attendees had dug deep to raise funds via an interactive heads and tails game, and a charity auction. At time of press we can not announce the profits from the event but it is fair to say these will further cement the overall 'on track' position.

Finally, on Saturday, after the rain soaked Gala Day, we held our annual Family party. Sold out again with 300 guests ranging from a few days old to great-grandparents, the emphasis was on family and fun. 3D Events Disco led the way but, to be fair, again the stars were the children who danced all night, dragging parents and grandparents to the dance floor to participate. With a hog roast and chips available, the night was another resounding success.





When we viewed the wonderful recreation field on Sunday morning it had taken quite a battering but we are delighted that the Parish Council and staff have managed to do such a marvellous recovery job to return it to being one of the best in East Anglia. As for the ICA, we have

further events planned for the next 12 months, including a farewell to the village hall party, and hopefully a Sportsman's Dinner. Watch this space, Facebook or the village website www.isleham-village.co.uk for details.

Finally, we would like to thank our grant seekers, everyone that attended any or all the events, and those people who kindly donated gifts and prizes for draws and auctions. However, we would particularly like to thank everyone that helped with the events from start to finish. Unsung volunteers are always the hardest to find

Marquee photo by Mark Goldsack



The sun DID shine for a few minutes!

but whilst we would always like a few more, to everyone that did something this year: a huge thank you from the ICA. The fundraising committee is small and could do with additional help, and as stated above we need willing volunteers for many aspects from maintenance to administration, HR to Legal, and even organising to litter picking! Please do step forward and be part of the success that will be for years to come, the Isleham's Community Centre.

The ICA website (www.islehamca.co.uk) is now part of the Isleham village website (www.isleham-village.co.uk) and we shall be adding the latest news regarding fund raising and progress reports. Photographs from the weekend will also be on the website.

Anyone interested in assisting with fund-raising or grant seeking for the new Centre please contact the Goldsack on 01638 780350.

*Clive Patterson For the Parish Council/
ICA Management Committee.*



Priory Garage



Used car sales



Renault Authorised repairs



MOT testing



Service & repair ~
all makes & models



Tyres



Exhausts



Batteries



Air-conditioning service &
repair



Priory Garage
Church Street, Isleham,
Cambs CB7 5RX
01638 780352/780625

www.manchetts.co.uk

FENLAND GARAGE DOORS

The area's most comprehensive range
of manual and automatic doors.

Plus repairs to all doors,
and spares.

*We are proud to say that more
than half our new customers
come to us by recommendation*

Newmarket 01638 620 001

Ely 01353 760 006

Showroom 01366 382 815

www.fenlandgaragedoors.co.uk



We offer our clients a comprehensive
range of interior and exterior

decorating solutions:
refurbishment, period restoration,
classic and contemporary finishes.

For more information
visit our website:

www.thepainttrust.co.uk

Or contact us to discuss your
requirements:

John Rees, Hillcrest,
5 Fordham Rd, Isleham

Tel: 07742 690839 (mobile)
01638 781936 (office)



MIKE & GINA MISSING
WELCOME YOU TO

The Griffin

REAL ALES
REAL FOOD
REALISTIC PRICES

NOW SERVING SUNDAY ROASTS
12 NOON TO 2PM

PLEASANT GARDEN WITH
CHILDREN'S PLAY AREA AND AVIARY

FREQUENT LIVE MUSIC

FOR FURTHER DETAILS SEE
WWW.THEGRIFFINISLEHAM.CO.UK

CHURCH STREET, ISLEHAM
01638 780447

ISLEHAM PARISH COUNCIL

ANNUAL REPORT

June 2012



Chairman's Report

It is my pleasure and duty to report on the activities of IPC for the last 12 months.

Being Chairman of PC in a village as active as Isleham brings its full share of highs and lows.

Some of the lows are the problems we have with dog fouling in the village, which has been increasing on the footpaths in spite of the fact that the council have provided a number of dog bins around the village; problems with litter on the Priory Green and Recreation Ground; increasing problems with parking around the school and at the top of Limestone Close. All of which as a PC we have tried to address as far as we are able.

On another note we have achieved Quality Status as a council mainly due to the efforts of our clerk and a small working party with her. A lot of work has been done on the village vision and the council have looked at potential sites and consulted with villagers on the best places to build new houses.

There has been an increased uptake of allotments and there is much work being done to improve the sites.

The Community Centre project after 4 years of hard work is becoming a reality and, if grant monies can be obtained, it is hoped that work will begin in August, which will be a real morale boost for the village and particularly those who have been working on the project thus far. This much-needed facility will help to increase the community activities within the village. All the ICA members are volunteers and I am thankful for their hard work and the time they have committed to the project over the past year.

Many thanks to Ray Sheldrick who once again has kept the recreation ground in immaculate condition and is a tribute to the village. We have had changes in the cemetery when Sid Cox was taken ill in June and unable to continue and we wish to pay tribute to the years he has spent keeping the cemetery so well. Tim Wilding has taken over and thanks go to him for keeping the cemetery in the pristine condition to which we have become accustomed.

Following the retirement of David Green as caretaker of the village hall and pavilion for which we send our thanks, Geoff Dabrowa and Andrew Smith are sharing these roles and I would like to thank them for the work they are doing. A new addition to the village this year is Ed Mayall who is litter picking round the village and I would like to thank him for his efforts.

My thanks go to my fellow parish councillors who I have had the pleasure of working with, for all the hard work they have put in over the past year; as I'm sure you all know the councillors are all volunteers and they give a large amount of their time to serving this community. And also to many thanks to the clerk without whose help none of this would have been possible.

Derrick Beckett

Isleham Parish Council

Income and Expenditure Account for Year Ended: 31st March 2012.

Operating Income

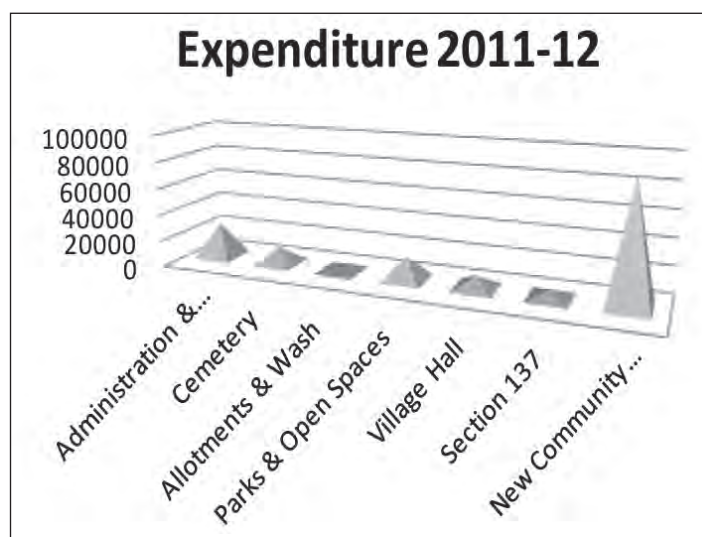
Precept	89,900
Administration & Finance	9,379
Cemetery	1,580
Allotments & Wash	2,478
Parks & Open Spaces	7,314
Village Hall	9,983
New Community Centre Income	144
Total Income	120,779

General Fund Analysis

Opening Balance	726,535
Plus : Income for Year	120,779
	847,314
Less : Expenditure for Year	161,522
	685,792
Transfers TO/FROM Reserves	650,000
Closing Balance	35,792

Running Costs

Administration & Finance	26,035
Cemetery	12,458
Allotments & Wash	1,188
Parks & Open Spaces	16,862
Village Hall	9,309
Section 137	6,110
New Community Centre	89,560
Total Expenditure	161,522



Financial Summary

The majority of the income to the parish council comes in the form of the Precept (this is collected by East Cambs District Council and is included in Council Tax payments). The balance of income includes bank interest, cemetery fees, allotment rents, recreation ground fees, village hall hire and *Informer* advertising.

A large proportion of expenditure during this last financial year has been to pay for professional services for the New Community Centre project.

Who is the Parish Council and what do we do?

Isleham Parish Council comprises 11 unpaid elected councillors who serve for a term of 4 years. The councillors represent an electorate of 1813 persons. At the time of this report there are two vacancies on the Parish Council; however, these should be filled by co-option at the meeting on 2nd July 2012.

The Council employs five part-time members of staff:

- Diane Bayliss—Parish Clerk
- Andrew Smith—Village Hall Caretaker
- Geoff Dabrowa—Pavilion Caretaker
- Tim Wilding—Cemetery Keeper
- Ed Mayall—Litter Collector
- Ray Sheldrick maintains the Recreation Ground on a self-employed basis

Parish Council meetings are held on the first Monday of every month except bank holidays. The meetings start at 7.15pm and they are all open to members of the public. 15 minutes is allocated at the beginning of each meeting for comments and questions. Meeting Notices and Minutes of the meetings are displayed on the Notice Board on The Pound and the website and copies are available from the Clerk.

Working Parties

Parish Councillors are expected to serve on a variety of working parties including Environment/ P3 (Footpaths); Parish Plan; The Wash; Finance; Village Hall; Policy Review and the ICA. We also have representatives on the Neighbourhood Panel; School Governors and on the various village charities.

Parish Council Activities 2011-12

Cemetery

There were 8 interments, 5 purchased plots and 11 memorial requests for the Cemetery; a London Plane was planted in the old cemetery to replace the Beech, which sadly had to be removed as it was diseased.

Allotments

15 new plots were let on the Dunstall Allotment site during the year.

Recreation Ground

Two new 'Hornbeam' trees were planted on the recreation ground.

Donations

Donations were made to the Staploe Transport Association, The Citizens Advice Bureau, Isleham Pre-school and the British Legion Poppy Appeal. The Parish Council continues to underwrite the production of the *Isleham Informer*.

The Council also funds the Fenland Elite Youth Bus, which attends the Priory on a Thursday evening. Dial-a-Ride continue to provide a bus service to Ely on a Thursday morning the cost of which is also underwritten by the Parish Council.

Planning

The Parish Council considered 24 Planning Applications.

New Community Centre

Work continues on the New Community Centre project and a number of grant applications are in progress at the time of writing. If all goes according to plan work will begin on site in September and the Centre should be open for use by Gala Day 2013.

Parish Council agendas and minutes are available to view in PDF format on the website: www.isleham-village.co.uk

- Parish Council email address: islehampc@btinternet.com
- Parish Clerk: Mrs Diane Bayliss, 37 Croft Road, Isleham. 01638 781687



The Beech tree that was removed from the old cemetery and replaced with a London Plane

Parish Councillors address list

Derrick Beckett (Chairman)	Appleyard Farm, 1 Houghtons Lane Isleham CB7 5SR Tel: 01638 780476
Vanessa Bruyneel-Smith	115 The Causeway, Isleham CB7 5ST Tel: 01638 781708
Paul Chaplin	Jay Jay Lodge, Waterside, Isleham CB7 5SH Tel: 01638 781745
Jeannette Malkin	17 Little London, Isleham CB7 5SE Tel: 01638 780283
Bob Mitchell	10 Sparkes Close, Isleham CB7 5RR Tel: 01638 780707
Lionel Neal	104 Beck Road, Isleham CB7 5QP Tel: 01638 780066
Clive Patterson	21 West Street, Isleham CB7 5SD Tel: 01638 780669
Richard Radcliffe	45 Sun Street, Isleham CB7 5RU Tel: 01638 780831
Hazel Thompson	9 Limestone Close, Isleham CB7 5RP Tel: 01638 780633
Roseanna Thompson	Fenrose Farm, 1 Fen Bank, Isleham CB7 5SL Tel: 01638 780994
Pauline Wilkes	6 Limestone Close, Isleham CB7 5RP Tel: 01638 780640
Diane Bayliss (Parish Clerk)	37 Croft Road, Isleham CB7 5QR Tel: 01638 781687 islehampc@btinternet.com www.isleham-village.co.uk

Isleham Gardeners

Hello everyone

I'm pleased to let you know that in spite of the depressing weather on Gala Day, the Isleham Gardeners' stall collected over £80, which will be used to fund future events. The stallholders – British to the core – were undaunted by grey skies and drenching rain: visiting members kept our spirits up and we enjoyed the afternoon.

The Committee are now turning their attention to the next event – the afternoon Cream Tea (with tombola), which is being organised at St Andrew's Church Social Centre on Saturday, 4th August. Join us there between 3 and 5pm and have a break from the Olympics on telly. If you are able to bring along a friend, so much the better.

And why not wear a hat on this occasion? Anything will do – an old gardening beret or a hat worn once to a wedding. Use your imagination and create your own little number in paper or cardboard – it may be worth a prize!

Looking forward to seeing you there.

*Jenny Hodd, Chairman, Isleham Gardeners
Tel. 01638 780729*



Professional, experienced & knowledgeable therapists providing accurate diagnosis, effective and lasting pain relief.

- Back pain
- Muscle spasm, strains, sprains & tears
- Knee, ankle, hip & shoulder injuries
- Tendonitis
- Frozen shoulder
- Sciatica
- Whiplash
- Tennis & golfer's elbow
- Repetitive strain injury (RSI)
- Adolescent sports injuries



**THE SPORTS
INJURY CLINIC**

The Sports Injury Clinic
Fordham House Estate
Newmarket Road, Fordham, CB7 5LL

Tel: 01638 724042
lee@thesportsinjuryclinic.org

www.thesportsinjuryclinic.org

The Isleham Society

17th May "Poaching" Peter Carter gave an illustrated talk about poaching and told of different ways poachers would go about their 'profession' He told of people known to him who were, or had been, poachers and using pictures to show how various traps and nets were set or used. He finished off the evening by giving an update on his work as the last commercial eel catcher in the Fens and how he is in great demand by radio and TV companies to feature in many programmes, some of which several of the audience had seen or heard. He has a family connection with Isleham as his mother is a member of Joseph Wells's family who formerly lived at Elderberry Farm in the Fen.

21st June "A Millers Tale" Duncan Marston, accompanied by his wife and son, told of the development of milling by his family, especially the Mill at Icklingham which is known as C Marston & Sons (Icklingham) Ltd. It was started by Duncan's grandfather and has been on the same site for the last century. In 1990 it was sold to a French company but was bought back again by the Marstons and is now back in their control. The fully automated mill processes around 2000 tonnes wheat starch flour per week, used mainly to produce glucose for a variety of uses in the food industry and for pharmaceutical products. A most interesting talk about a long standing business being run by the family again.

Sue Hart

BSc (Hons), S.R.CH,
M.Ch.S

**Podiatrist
Chiropodist**

HPC Registered 12573

Home visits

Daytime and evening appointments

Home 01638 555187

Mobile 07710155409

susie.harty@googlemail.com

- 20 years' experience
- Corns/callus
- Ingrown toenails
- Nails & thickened nails
- Gait analysis/biomechanics/orthotics
- Footwear advice
- Verrucae
- Fungal infections
- Diabetic advice and treatments.



Future dates:

August - No meeting.

20th September A guided tour and afternoon tea at the 'Theatre Royal' Bury St Edmunds. The coach picks up at the Church and the Village Hall at 1.45pm and returns at 4.45pm.

18th October "The Tharpe family of Chippenham and Jamaica" An illustrated talk by Jill Shapland.

We extend a warm welcome to all visitors to any of our meetings. The cost for non-members is £2.

NB. If our Village Hall is unavailable for any of our meetings during the year, we will inform you of any change of venue.

Vernon Place, Chairman of The Isleham Society

Mog's Cottage

Holiday home to let in Cromer, Norfolk

3 bedroom Victorian town house

Sleeps 6

Just 400 metres from the beach

Call Mark or Fiona on 01638 780924

www.mogscottage.co.uk

Carpentry Services

Established 1970

For all General Carpentry
and Building Work
No Job Too Small

Grant Hounsome
34 Sun Street

Tel: 01638 780 358

Mob: 07801 950 627

merrymonk@tiscali.co.uk

carpentryservicesisleham.webs.com



Kitchens/Bathrooms
Doors/Windows
Interior. Exterior
Maintenance
Lodge Gables over
Boarded



Limestone Close photos by Kelvin Morgan

Limestone Close street party on Sunday 3rd June turned out to be an indoor event thanks to the great British weather, but this didn't faze us.

We held it in the community room which was a bit of a squeeze but we managed to get everyone in.

There were approximately 70 tenants, residents family and friends who attended, the age ranging from the 21 months to the grand age of 92.

We had music playing throughout the day from the 50s right up to the present day.

We started off the celebrations with a Royal Quiz followed by food from the BBQ (cooked by the men who braved the weather under the gazebos).

We then played a fun and light hearted game of Mr & Mrs, where 3 couples volunteered to join in and it turned out to be hilarious (it's amazing how much you don't know about your partners!).

We then enjoyed the lovely home-made desserts.

The raffle was drawn. The raffle raised £150, which was donated to the Isleham Community Skate Park, the presentation was held on Friday 15th June.

The rain eased off and we all went outside to have a group photograph taken, to commemorate the days event.

We had a splendid day celebrating the Queen's Diamond Jubilee, everyone said what a wonderful time they had and the community spirit was just brilliant.

Sylvia Slater



Present to receive the donation to the Isleham Community Skate Park were Euan & Ted Millar (lads) and Marc Bowers & Pauline Dunbavin (adults).



Jenny Platt

Isleham WI, at their afternoon tea, celebrating the Jubilee.



Left: The winners of the Jubilee cake design competition (Taylor, Emily, Ruby and Daniel) with the cake (made by Fullers of Soham). Above: Children eating the cake and celebrating on the playground. Below: We dressed up in red white and blue for the day. Each of the children were also presented with a jubilee mug and a union flag by the Parish Council.

Isleham Parish Council has a number of Jubilee mugs that can be purchased at a cost of £2.46 each (inc VAT). Contact Diane Bayliss 781 687.



Left: Jubilee Bonfire near 'The Ark' building site. Note the moon rising on the right of the photo.

CHURCHES

Pound Lane Free Church

Pastor: Dave Hall (01638 781343 or 01638 780636, email pastor@plfc.org.uk)

Elder: David Brown (01638 780410)

Sunday:

Sunday worship: 11am and 6.30pm.

Celebration of the Lord's Supper:

First Sunday following evening service

Third Sunday following morning service

A Crèche is available for babies to Year 3 during the morning service. Refreshments are served after the evening services, except the first Sunday of the month.

Fellowship Lunches are served after the morning service on the third Sunday of the month.

Kingdom Kids (3 years–Year 3): 10–11.15am (Sue Thompson 01638 780030)

All Stars (Years 4–6): 10–11.15am (John Martin 01638 737212)

Covies (Year 7–18 years): 9.30–10.30am (Steve Neale 01638 780717).

There is a hearing loop installed and signing for the deaf is available as well as Braille songbooks. We have a comprehensive Child Protection Policy and a CRB check has been carried out on all children's and young people's workers.

Monday:

Music Mayhem: 9.30–10.30am.

(Sue Thompson 01638 781343 Preschool children during school term only)

A fun time for your pre-school children – action songs, musical instruments and the ever-popular "Sockeroo". Followed by refreshments and a time to relax with friends whilst the children play. New members always welcome.

All Stars Fun Night: 7.00–8.15pm.

Tuesday:

18 – 30s: 7.00p.m.

(Suzanne Hall 01638 781805) Meeting in homes with monthly social events.

Wednesday:

Fellowship: 2.15–3.15pm.

(David Brown 01638 780410) Meeting on alternate Wednesdays and catering for the more mature in age. They enjoy meeting together for a Bible talk, spiritual songs and prayer. Various fun events and meals are also organized during the year. New members are always welcome.

Church Night: 7.40–9pm.

Bible study, prayer and fellowship; for mid-teens upwards.

Thursday:

Coffee Morning: 10–11.30am.

Turn up any time between 10 and 11.30am for free tea, coffee and cakes. Chat with friends and make new friends. Open to any age. Includes an eight minute "In the News this Week" slot in the middle.

Covies Club Night: 7–9pm.

Friday (fortnightly in members' homes):

Women's Meeting 10.30–11.45am (Sue Hall 01638 780636). Christianity Explored courses are run regularly – please ask for dates of next course.

For further information on any of the above, or if you would like to speak to Pastor Dave:

Phone: 01638 781343 (Church Office)

01638 780636 (Pastor's Home)

Email: pastor@plfc.org.uk

secretary@plfc.org.uk

Web sites: www.plfc.org.uk & www.isleham.com

As you will see from our report on ONE WAY 2012, we had a really good time with Roger Carswell.

We'd like to invite you to join us for our Harvest Thanksgiving Family Service on Sunday 16th September when we celebrate God's goodness to us over another year. ■

High Street Church

SUNDAY SERVICES: All are welcome to our Sunday services throughout the year.

Morning worship: 10.30am All ages are very welcome from the very young to the very old. The children have their own activities.

Evening fellowship: 6.30pm A less formal service usually with opportunity for individual sharing. Come and hear about God's goodness! Tea, coffee and good conversation are available after both the morning and evening services.

On Sunday mornings the following children's facilities are available:

Crèche is available for babies and tots up to 3 years old: the crèche workers are very experienced and provide a safe, fun playtime for the little ones.

Junior Church, for those who are aged 3 to 7, is a fun-filled session with singing, crafts, drama and stories. The older Junior Church meet at the Village Hall. This is for children who are 7 to 11 years old. Their morning starts from 10am with a craft, followed by a wide range of activities

encouraging the children to discover the Christian faith for themselves. We would love to see some new faces and visitors would be made very welcome!

Impact is for the 11 to 14 year olds and on a Sunday morning they receive teaching that is relevant to pre-teens/teenagers. On a Friday night this group meets socially and they all have a lot of laughs!

OTHER WEEKLY ACTIVITIES

Our midweek care structure called **High Street Life** gives a whole range of fresh initiatives to care, support and be involved in the local community. It includes: Life groups, plus Men's and Ladies' groups; a Media and Creative Arts group using modern technology to convey the message of hope; a Healthy Living group; practical DIY advice; a Quilting group, Papercraft group, and much more. Are you new to the village? High Street Life is more than just Church on Sunday so why not contact us, we'd love to get to know you and tell you what makes us tick.

Our **Rendezvous** group – for the more mature among us – meets every Tuesday afternoon at 3pm. Around 60 to 70 of us enjoy this time together each week but new faces are always welcome.

Luncheon Club is for those of retirement age and happens once a month on the second Wednesday from 12–2pm. An excellent meal for just £2.50 not to mention the great company! For further details of any of the above, please contact Kathryn of 01638 780652 of the Church Office.

Little Lambs is our parent/carer and toddler group which runs term time Fridays from 9.15–11.15am. Parents/carers can relax with a coffee while the children play. Each week we have a craft activity, juice time and end the morning with singing. All welcome!

So whether it's on a Sunday or midweek, we would love to see you. Why not come along, give us a call or take a look at what we do on www.highst.org.uk? If you would like to know more then please contact our church office on 01638 780985. ■

Three Rivers Group St Andrew's Parish Church

Regular Church Services

Sundays: The main service is at 9.30am. Junior Church is in the Social Centre, and in church at the All Age Communion Service on the third Sunday of every month. Third Sunday 8am Holy Communion – Book of Common Prayer. All welcome.

Midweek services

Monday 9.15am Morning Prayer. 7, The Close, Kennett

Tuesday/Wednesday. 9am Morning Prayer Fordham

Wednesday: 4.15pm Evening Prayer Snailwell

Thursday/Friday 8.15am Morning Prayer Fordham

Weekly Activities

Tuesday: 9am–12 noon: Coffee Morning in Social Centre

Friday: Choir Practice 6.30pm in church. All welcome. Contact Mark Liversidge 01638 781696. Bell ringing practice 7.30pm – beginners welcome! Contact Ruth Ogden, the Tower Captain, for more information.

Sundays@6: Our Youth group meets twice a month at the Old Vicarage in Isleham; we hope that many other young people will join us. Details from Rev'd Kate or Rev'd Mike.

Priests The Rev'd Mike Banyard: 01638 721616, banyardmg1@yahoo.co.uk; The Rev'd Kate Peacock: 01638 723960, kate.peacock@btopenworld.com

Churchwardens Rob Savage: 01638 780218, robert.savage@islehamchurch.org.uk; Nick Carver: 01638 781116, nick.carver@islehamchurch.org.uk

Tower Captain Ruth Ogden: 01638 780646, ruth.ogden@islehamchurch.org.uk

Choir Director Mark Liversidge: 01638 781696, mark.liversidge@islehamchurch.org.uk

Webmaster Andrew Stephens: 01638 781468/780229

Service Sheet Editor Rob Savage: 01638 780218 robert.savage@islehamchurch.org.uk

For more information about the Group and St Andrew's please visit our website at www.islehamchurch.org.uk ■

ANDREW MYSON
BUILDING AND GARDEN
MAINTENANCE
Painting And Decorating
Floor And Wall Tiling
Gutter Repair And Clearance
Fencing
Garden Clearance

24 HALL BARN ROAD
ISLEHAM
CAMBS
CB7 5QZ

TEL: 01638 780680
MOB: 07775673480
a_myson@yahoo.co.uk



Firm Foundations Day Care



Tel: 01638 781616

Flexible ChildCare 0–8 years.

Open all year 7.30 am–6 pm.

Friendly, mature, experienced, qualified staff.
Safe, secure and nurturing environment.

10hr–15hour Free sessions for
2-, 3- and 4-year-olds + Sibling discount.

We hold 'Forest school' sessions
Nutritious, Hot meals cooked daily.
Abundant play space and equipment
Off street 30 car park capacity.

Quality care with reasonable price.

'It's about the process not the product'

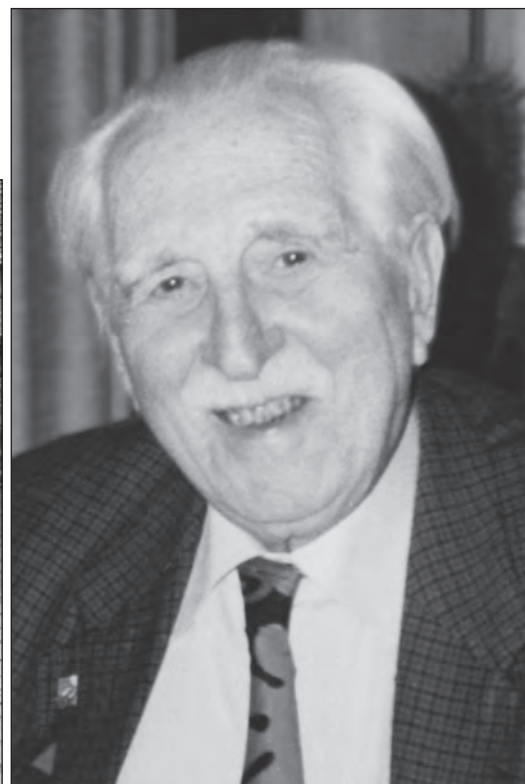
www.firmfoundationsdaycare.co.uk

Isleham Road, Worlington, B.S.E. IP28 8SW

Seat presentation to Isleham in memory of Professor Leslie Audus

A presentation was made to the village of a memorial bench dedicated to the memory of Professor Lesley Audus who died on 5th May 2011; it is sited on the corner of Pound Lane and Church Street.

Vernon Place



The attached picture shows his two daughters, Fiona Pushman and Hillary Audus and their families plus Dianne Bayliss (Parish Council Clerk), Fred Eden (Soham Grammar School) and Maisy Clark (family friend) at the presentation to the village on Saturday 9th June 2012. The 'Welcome Home' sign, made by his mother, greeted him on his return from the war.

After the presentation, his ashes were interred in the Isleham cemetery in the grave of his late wife Rowena. Leslie was born and raised in the village and it remained a place that mattered to him throughout his long life. The family wanted something permanent to commemorate this lasting link and were pleased the Parish Council approved their request for the erection of the inscribed memorial bench.

Mrs Fiona Pushman presented a book, written by her father entitled *My First Quarter Century*, to the Isleham Society, which gives a superb written account of his early life. In return, Vernon Place gave her copy of an old photograph from the *Arthur Houghton Collection* on behalf the Society, showing Leslie's Uncle Sid (Audus) sitting outside his garage with two old friends on chairs (which he provided for people sit on). His garage (now long gone) was located on almost the same spot as where the memorial bench is now situated.

Leslie Audus attended Isleham village school before gaining a scholarship to Soham Grammar and then gained a scholarship to Downing College Cambridge in 1929 where he got a first in Botany. He went on to research into plant sciences, the value of which was later realised by supermarket chains as, following this research, they reduced sales of whole lettuces to cutting up salad vegetables and selling them in plastic bags to maintain their crispness. On completing his PhD, he was appointed Assistant Lecturer in Botany at University College Cardiff in 1935. In 1940, he joined the RAF as a volunteer reserve. After training in radar, he was posted to Malaya in 1941 as a Flight Lieutenant. He was taken prisoner of war by the Japanese in Java in 1942. His experiences of the horrors of this time were recorded in his book *Spice Island Slave* (1996). With his expertise and knowledge, using makeshift equipment, he produced vitamins and easily digestible proteins that saved the lives of many of his fellow prisoners. After being demobbed in 1946 he continued his career in research, retiring from his post of Emeritus Professor at Bedford College, University of London in 1979.

Vernon Place



KAREN'S GROOMING

All your pet's grooming requirements on your doorstep

01638 781791
07803 548673





Women's Institute

On 2nd June WI members celebrated the Jubilee with an afternoon tea in the garden of the Social Centre. It was a lovely afternoon with the food provided by members, many of whom dressed in red, white and blue in honour of the occasion. A competition for the most appropriate headwear was won by Ginette Haws, with Eve Graham coming second.

On 14th June we had our summer outing, when we travelled to The Manor at Hemmingford Grey. The house, first built by Normans in 1130, was made famous as the house in Green Knowe by Lucy Boston who restored and lived in the building.

The original house was in amazing condition, and full of atmosphere. We were able to view a remarkable collection of quilts made by Lucy Boston in her old age. Well worth a visit.

A number of members also took advantage of trips organised by Cambridge Federation, going to Adam Hanson's Farm in the Cotswolds and also to Windsor Park where they visited the Savill Garden and enjoyed a special Jubilee Tea.

In July we entered a float in the Gala "The Year is 1952", and all involved enjoyed the Parade before the heavens opened. Like everyone else we hope for better weather next year.

In August we have an Open Meeting to which all are invited. Our speaker is Mrs W. Marshgreen, who will talk about 'The Art of Accessorising'.

If you would like to join the WI or simply come to a meeting to see what it is like, please do come along. We meet on the second Thursday of each month in the Village Hall, 7.30pm for 7.45pm, and new members are always welcome.

For further information contact:

Glenda Preece
01638 780734, gjpreece@aol.com



Fordham Victoria Hall
Prickwillow Village Hall

Monday 6.30pm
Thursday 6.30pm

Are you ready to party yourself into shape?

An exhilarating, effective, easy-to-follow, Latin-inspired, calorie-burning dance fitness workout!

All Abilities Welcome!

For information or to book, contact Stephanie
07793 815720 Stephanie@lovetodance.biz



Plumbing, Heating & Drain Services

BLOCKED DRAINS CLEARED

- Gas Boiler Service & Maintenance
- Power Flushing to Heating Systems
- Home Buyers' CCTV Drain and Plumbing Surveys
- All Plumbing & Heating Repairs and Alterations
- All Work Guaranteed

TEL: 01638 742873
MOBILE: 07932 773515
7 Ness Road, Burwell
Cambridge, CB25 0AA

Celebration Cakes



MADE TO ORDER FROM £15
PHONE JACKY ON
07811 484839
ANYTIME



New projects - Rewires - Consumer Unit Upgrades
Minor works - Inspection and Testing

KD
Electrical Services Ltd

80 The Causeway, Isleham CB7 5SX
www.kdes.co.uk info@kdes.co.uk
07792 179438

ELECSA Approved Contractor Part P Registered Company



23 years of British expertise and craftsmanship
Come and buy direct from our factory
Beautiful fabrics ~ superb quality ~ great prices
Friendly efficient fitting service
www.starcurlains.co.uk
Curtains ~ Blinds ~ Poles ~ All soft furnishings



Showroom opening hours:
Mon to Thurs;
9am-4pm
Fri and Sat;
10am-2pm
01638 578700

Enjoy free parking
outside our showroom,
just off the A14
2B Swan Lane Business
Park, Exning, Newmarket,
CB8 7FN

From the Three Rivers Rector, the Rev'd Mike Banyard

Well it's a touch warmer, and the rain seems to have ceased for a few moments. One of the many joys of our time living in Cyprus in the mid to late 1980s was the fact that you could plan your summer, for it would stop raining usually at the end of March, and then not start again until November. And of course, with that, everything became very brown, and often in the mountains, fires would start easily and then villagers up there would have to be very vigilant.

But that's enough of the weather!

It's the wedding season in our churches. They are great occasions, everyone scrubs up well and looks the part, nerves come to the fore, and that special moment when the happy couple make those vows are very exceptional. And often couples choose words by St Paul from his letter to the Corinthians. Corinth was a fairly seedy place in his day, and in his letter, Paul states quite clearly what true, real love is all about.

Paul writes. "v"

Now this, it seems to me, is what the foundation of all our lives, single, married, living committed lives together, is all about. Jesus tells us that there are really only two commandments which should guide our lives on earth, Love God and Love your neighbour as you love yourself. Challenging words; simple and apparently straightforward. I cannot think of any better guide to life here on earth. And we know, because we are human, that this is the gold standard, that this is what is at the heart of all our relationships, and that yes, sometimes, we will fall short of these ideals. But without that vision, and without trying to live up to these ideals, how will we live together in peace and harmony, and how will we ever become the human beings we are made to be?

God bless,

Mike

01638 780188



- Felling
- Shaping
- Pollarding
- Planting and Re-planting
- Crown Reductions
- Wood Chippings & Firewood
- Lawn Care & Maintenance

- Free Quotations
- NPTC Qualified
- Fully Insured
- Consulting & Surveys
- Hedge Cutting
- Coppicing
- Thinning

URL: www.greenwoodtreesurgery.co.uk

e-mail: info@greenwoodtreesurgery.co.uk



Professional Building & Landscaping Services

Are you proud of your driveway?
Does your house need some work?
Do you use your garden as an extra room?

We can make that dream come true.

Our expert services include:

- Driveways and Paving
- Patios and Paths
- Fencing, Trellis work and Decking
- Turfing and Seeding
- Garden design
- All Building work
- Property Maintenance
- Bathrooms and Tiling

Please call with any questions and to make an appointment:
Office: 01638 721893 Site: 07789 261266 Freephone: 0800 288 9110
Visit our website for examples of our work and references:
www.amsbuildingandlandscaping.co.uk

S. W. Downey Electrical Contractor

42 Years' Experience
Domestic and Commercial
City & Guilds Qualified

Free Estimates

07786 108673

01638 781169



The Waxpert

Caroline Mears has built a loyal following by ensuring her client comfort is as important as the waxing she does. Using Perron Rigot wax, the finest wax on the market and specialising in Brazilian waxing using "hot" wax (a low temperature stripless wax). With Caroline you know you will get the best wax you have ever had!

Caroline offers waxing treatments to both Male and Female Clients, from her private home based salon in Burwell. Caroline is fully insured and registered with The Guild of Beauty Therapists.

Brow Design £10	Brows £7
Half Leg £14	Bikini £10
Brazilian / Hollywood £30	Male Back & Shoulders £30
Male Chest & Abs £30	Full Body Spray Tan £20
Express Minx Fingers or Toes £18	Lash Extensions £50

Opening Mon - Fri 6pm - 10pm,
Sat 8:30am - 4pm by appointment only.
Bridal and Prom packages available upon request.

www.waxpert.co.uk
07791 631 529
caroline@waxpert.co.uk
twitter: @waxpertwax



MONKHOUSE

CARPENTRY SERVICES LTD.

Carpentry & Building

CITY & GUILDS QUALIFIED
FREE ADVICE & QUOTATIONS

For all carpentry and building work

KITCHENS
WINDOWS & DOORS
EXTENSIONS
RESTORATION
GENERAL MAINTENANCE

For a professional & reliable service

Darrell Monkhouse
36 Pound Lane, Isleham
Tel: 01638 781203 Mobile: 07808 569617

Buy British... Buy local... Buy from the farm gate

www.thompsonsfarmisleham.co.uk



Thompson's Farm Meat
Fenrose Farm,
1 Fen Bank, Isleham CB5 7SL
Tel: 01638 780994/780431

Family run Farm proudly breeding, rearing
AND selling our OWN PRODUCE!

- Hereford and Angus 21 Day Hung Beef
 - Pork
- Free Range Chicken
AND
- NEW for Summer 2012 - 'Anna's Fenrose Lamb'

Open at the Farm Gate:
Tuesday, Thursday and Friday - 3pm until 5.30pm
Saturday - 10am until 4pm
Sunday - 10am until 12noon
AND

We also have a stall next to Priory Garage on Saturday mornings from 8am until 12 noon.

Buy British... Buy local... Buy from the farm gate

LANGTRY

FITTED FURNITURE

EXTENSIVE RANGE OF KITCHENS AND BEDROOMS




BESPOKE & HANDMADE FURNITURE

SHOWROOM OPENING HOURS:
7am to 5.30pm Mon - Fri
9.30am - 4.30pm Sat
Unit 24, Northfield Business Park,
Soham, Ely, Cambs. CB7 5UE
(Behind Scampers)

Tel: 01353 725380
Fax: 01353 725384
Out of hours phone:
Tony on 07738559569

- From Design to Completion
- Supply & Fit or supply only
- Top Brand White Goods
- Bespoke Sizes to fit any Kitchen & any budget
- Free Design service

www.langtryfurniture.co.uk

ISLEHAM PARISH COUNCIL UPDATE

The Parish Council normally meets on the first Monday of every month at 7pm in the Village Hall (Back Room). Members of the public are invited to attend the meetings and 15 minutes are set aside each month for public question time. Full copies of the minutes are available on the Website, the Notice Board and from the Parish Clerk Tel: 01638 781687 islehampc@btinternet.com



Councillors

- The Council have received resignations from Steven Baines and Martin Earl. Our thanks go to them for their contributions to the Council over a number of years.
- Richard Radcliffe and Bob Mitchell have been co-opted to the Parish Council so we still have a full quota of 11 councillors.

Police Matters

- New Contact Number for Police - 101
- There is still a problem with parking around the village including outside the school, at the top of Limestone Close and on the yellow lines outside the Co-op. Please be considerate of pedestrians and other road users when parking your vehicles in the village.
- There has been a theft of four upright posts from the car park fence – if anyone has any information about this please pass it on to the Police using the contact number above.
- Neighbourhood Panel meetings are held bi-monthly in Soham and parishioners are encouraged to attend to raise matters of concern.

Village Hall Report

- The village hall will be closing 20 weeks before the end of the building of the new centre. This is likely to be next March/April and the Council will give as much notice as possible. Once the build has commenced it should be possible to confirm a date for this.

Recreation Ground Report

- The MUGA is available to hire during the day and at weekends – please contact the Clerk for more details.
- ECDC will be running 'Summer Daze' a holiday programme on the recreation ground from Monday 23rd – Friday 27th July.

ICA Report

- The community centre project is still moving ahead and it is hoped that work will commence in September.
- Provisional grant offers have been made by the Football Foundation and Sport England.

Cemetery and Churchyard Matters

- The Council is currently having an electronic map drawn up by Pear Technology. It is planned to transfer all the burial information to this electronic system over the next year or so. The original record books will continue to be held and archived regularly with the County Council.

Highways Matters

- Highways Matters: There are still a number of pot holes around the village – these are the responsibility of the County Council and they are continuing to repair these

although they are being hindered by the continual rain and lack of funds.

- The Parish Plan working group will be meeting during July to discuss plans for the telephone kiosks and footpath signs throughout the village.
- Due to the excessive rainfall the growth of grass around the village is prolific; the Council schedule a certain number of cuts during the season however the contractors are having a job to get onto the grass to cut it.

Allotment Matters

- There are still a few plots still to rent on Station Road and a large number on Beck Road, please contact the Parish Clerk Diane Bayliss for more information.

Planning Matters

- The council considered and raised no objection to a planning application for 26 Hall Barn Road.
- The council objected to the planning application at 45 West Street, Isleham.
- Planning approvals were received for 79 The Causeway and 44 East Fen Road.
- The Council received approval for remedial works to trees at 23 Limestone Close.
- Planning Applications are available for viewing on the East Cambs District Council Website or an appointment can be made with the Parish Clerk.

Street Lighting

- Balfour Beatty is in the process of replacing the street lighting throughout Cambridgeshire over the next several years. There will be 10% fewer lights; however, the new white light source will be brighter therefore the impact on the street will not be great. There is no more detailed information at the moment.
- If your street light is not working please contact the Parish Clerk with the light number, she will then report it to the County Council.

Dog Fouling

- A number of dog bins have been installed around the village although there are still a number of incidents of dog fouling. The dog warden can be contacted on 01353 665555 or you can file a report on the website www.eastcambs.gov.uk ■

Serenity Beauty

Pamper yourself and enjoy a relaxed, professional service for all your Beauty and Holistic needs

Call Gemma: 07736931818

For Appointments & Details
58 Friday Street, West Row



Gala 2012: Results

Floats

1. Isleham Swimming Pool Association: Treasure Isleham (above)
2. Isleham Under Fives: Olympics (below right)
3. Cubs: Mad Hatter's Tea Party (next page)

Congratulations and thanks to everyone who entered this year. We had a record number of entries in our usual Marquee and no one could have anticipated the success of the first-time Arts and Craft Marquee. It was not perfect on the day but it was the pilot and lessons learnt this year have been noted and we will be much better prepared next year (hopefully the weather will be kinder too).

A special personal word of thanks to all the people I harried for months to grow and sew, etc., etc. You certainly responded but don't expect any respite next year.
Margaret Davies

Open Competition Results

SCARECROW COMPETITION

1. Louise Finlay (Best In Show)
Also Evelyn Hawkins Cup

FRUIT & VEGETABLE COMPETITION

Four Potatoes

1. Chris Maxfield
2. Clive Hall

Four Broad Beans

1. Clive Hall
2. Ray Graham

Four Beetroot

1. Clive Hall

Four Carrots

1. Clive Hall

Four Sticks of Rhubarb

1. Fred Preece
2. Richard Haw
3. Clive Hall

Container of Produce

1. Clive Winter
2. Clive Hall
3. Jan Lewis

A Bowl of Soft Fruit

1. Clive Hall (Best in Show)
2. Fred Preece





Six Matched Hens' Eggs

1. Imogen Lason
2. Kale McKinnon

Six Eggs from Mixed Poultry

1. Kale McKinnon

No entries in category for **Unusual or Out-of-Season Vegetable.**

FLORAL COMPETITION

An Arrangement for the Diamond Jubilee or Olympics – or a combination of both

1. Alison Washtell
2. Fred Preece
3. Ms Burford

A Vase or Bowl of Flowers

1. Alison Rust
2. Glenda Preece
3. Jan Lewis

A Vase of Fresh Mixed Herbs

1. Glenda Preece
2. Miss P. Dorey
3. Sheila Taylor

Sweet Peas

1. Julie White
2. Helen Hall
3. Ray Graham

Pansies

1. Sheila Taylor
2. Brenda Downey
3. Unnamed

A Single Rose

1. Ann Ford (Best in Show)
2. Ginette Hawes
3. Eve Graham

Three or Five Roses

1. Unnamed
2. Tim Washtell
3. Eve Graham

Garden Container

1. Helen Hall
2. Jan Lewis

HOME BAKING COMPETITION

Six White or Wholemeal Rolls

1. Unnamed
2. Michelle Haw

Loaf of White/Wholemeal Bread

1. Ben Ruddick
2. Will Taylor
3. Mia Roberts

Cheese Scones

1. Kia Haw
2. Helen Hall
3. Hannah White

Fruit Scones

1. Hannah White (Best in Show)
2. Sheila Roberts
3. Elaine Riley

A Puff Pastry Mediterranean

Vegetable Tart

1. Sandra Lee

Rhubarb Crumble

1. Helen Hall
2. Sandra Lee

Lemon Drizzle Cake

1. Annette May
2. Sally Chaplin
3. Glenda Preece

JAMS, PICKLES AND CHUTNEYS

Jam

1. Helen Hall
2. Helen Hall
3. Jan Lewis

Marmalade

1. Jan Lewis (Best in Show)

Pickled Onions

2. Ray Graham (first and third not awarded)

Pickled Shallots

No entries

Mixed Pickles

3. Sandra Lee (first and second not awarded)

Pickled Beetroot

1. Helen Hall
2. Jan Lewis

Apple Sauce

1. Helen Hall

CHILDREN

Six Decorated Cup Cakes

1. Eve White
2. Mya Davies
3. no award

Favourite Teddy/Soft Toy dressed as an Olympian

1. Eve White
2. Ben Ruddick
3. Daniel May

COMPLETE PROPERTY MANAGEMENT

All commercial and domestic projects undertaken.

City & Guilds Qualified, Fully Insured.

Tel: 01353 360227

Mob: 07591 157006

completepropertymanagement@ymail.com

Allotment Plot/Garden in a Seed Tray

1. Isleham Pre-School (Best in Show)

Pasta Art on a Plate

1. Lottie White

ARTS AND CRAFTS SECTION

A Piece of Home-Made Work

1. Louise Webber
2. Linda Dunbavin
3. Donna Carpenter

A Painting or Drawing

1. Jan Lewis
2. G. Hewitt
3. Lynn Clarke

A Piece of Woodwork/Modelling

1. Louise Webber
2. Martyn McKinnon
3. Sonny McKinnon

Photographic Art

1. Eve Graham (Best in Show)
2. Lynn Clarke
3. Rosie Mayes

School Art Competition

Pre-School

1. Jack Royston
2. Lily Clarke
3. Olivia Volz

Reception

1. Ruby Marks
2. Joseph Drayton
3. Isla Short

Year One

1. Joshua Smith
2. Hannah Jones
3. Izzy French

Year Two

1. Niamh Bridgeman
2. Jack Palmer
3. Marni Sillitoe

Year Three

1. Su-Lin Mulgrew
2. Sonny Mackinnon
3. Aalliyah Mulhall

Year Four

1. Benjamin Ruddock
2. Harry Oliver
3. Kim Cruickshank

Year Five

1. Beth Buchan
2. Georgia Heavens
3. William Pegler

Year Six

1. Jessica Cheal
2. Oscar Baldwin
3. Leigh Richardson

Whilst every effort is made to accurately record the adjudged results, mistakes do sometimes occur and in such event unreserved apologies are offered.

Bowls Report

We have now reached the half-way point of a very frustrating season weather-wise. Week upon week has seen very few good bowling days/evenings and the cancelled matches continue to mount up. On the green, we have had a very mixed bag of results in the various competitions. We are mid table in the Ely and District league and started well in Division 4 of the Cambridge and District League. Placed second at the mid-point, we are now looking to press on and achieve a good promotion run in. We are still involved in a number of cup competitions but have just lost a league cup semi-final to the 'auld enemy' namely Fordham, which is always hard to take.

On an individual level, our youngsters have impressed as always. Shane Dunbavin progressed through two rounds of the champion of champions before losing out to an England international.

Andrew Thompson, Callum Luker, John Foreman and Darren Dunbavin have all been involved in the Bowls Cambridgeshire County under 30s matches. Darren had also reached the final of the county under 25s singles competition, the final to be played at St Neots later in July. This also means he qualifies to play in the National Championships at Worthing in August.

We have also learnt that the village is close to welcoming a Commonwealth bowling champion to its residency, more next issue perhaps!

The outdoor season has now commenced and a full 17 weeks of fixtures will keep us all very busy.

Barry Grimwood, Club Captain





Right: Pauline, Vanessa, Hazel and Diane all ready for their Big Day.
Above: No idea who this could be...

Not everybody gets to see the Queen close up in the flesh, but on 13th June four members of our community, Diane Bayliss, Pauline Wilkes, Hazel Thompson and Vanessa Bruyneel-Smith did just that when they were fortunate to represent Isleham at Her Majesty the Queen's Diamond Jubilee picnic at Burghley House, Stamford.

The Queen arrived mid-morning in a burgundy-coloured helicopter. She was wearing a turquoise, long-sleeved dress with matching hat.

Luckily the rain held off and our ladies had a wonderful day. The entertainment included a display by the Red Arrows, a Battle of Britain flypast and military bands and displays, finishing in 'Last Night of the Proms' style at about 4.00pm.

It was truly a day to remember.



YOUR LOCAL Property Repair Specialists

As Insurance Repair Specialists...

...Concept Building Solutions handle your whole claim directly with your insurance company

Hassle free & with no cash outlay!

We deal with buildings insurance claims, from small domestic claims to large commercial



- 24/7 complete service
- Guaranteed appointments
- Fast reliable turnaround
- Vetted local tradesmen
- Free claims management

www.concept-solutions.co.uk



01223 258379

*Electrical, Plumbing, Roofing, Plastering, Joinery,
Decorating & Building Restoration*

