

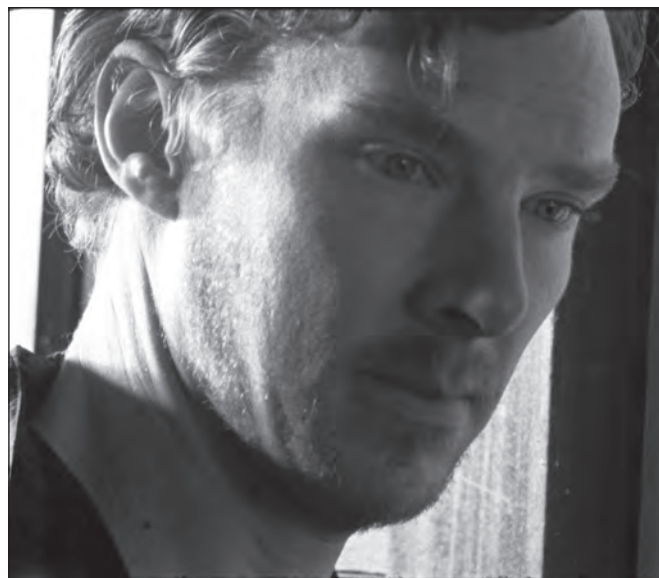
Isleham Informer



Issue 47 • October 2011

ed@islehaminformer.org.uk • 01638 780839 • www.islehaminformer.org.uk

Wreckers – at last!



Those among us gifted with a prodigious memory will be able to recall the long hot summer days of 2009 and the presence in the village of a film crew who were making the most of Isleham's photogenicity as a backdrop for a feature film. The results of all this intense labour are finally about to be available for public viewing!

There will be a special screening of *Wreckers* for all of you who helped and hosted the filmmaking team, and for anyone local who will find it of interest. The screening will take place at the Jubilee Centre, Mildenhall, 8.00pm on Saturday 12th November. Doors open at 7.00pm for tea and cake with the director! All are welcome but please let Dictynna know if you are coming so she can reserve you a place: her email is dictynna@googlemail.com. This is a free screening; we will be making a collection for Combat

Stress, a charity that helps vulnerable ex-servicemen and women. Please note that the film is not suitable for children. The *Wreckers* team sends everyone their best and has very fond memories of their time in Isleham!

WRECKERS

(2011. 86 min. Cert TBC)

Wreckers stars Claire Foy (above left - seen in *Little Dorritt*, *The Promise*), Benedict Cumberbatch (above right - *Sherlock*, *Tinker Tailor Soldier Spy*) and Shaun Evans (*Being Julia*, *Boy A*).

Continued on Page 6



All Wreckers photos courtesy of Dictynna Hood

Mildenhall Monumentals

We offer a sympathetic, understanding service creating unique memorials made carefully by qualified fine artists and craftsmen with over 30 years' experience.



**Additional
Inscriptions
Cremation Plaques
Cleaning and
Restoration
Granite and
Natural Stone
Benches**

**Garden Ornaments, Water Features,
House Plaques, Sundials...**

**For our free brochure call:
01638 715525**

**www.mildenhallmonumentals.co.uk
Southgate Avenue, Mildenhall IP28 7AT**

Contents

1 Wreckers	13 Dial-a-Ride
2 Contacts; Next issue	14 Isleham Nature
3 Village Notes; Diary	Reserves; Gala AGM
4 Paper, Patch and Sew	15 Community Centre
5 Village Clubs	16 The Day Isleham Shook
6 Wreckers continued	17 Energy Meters
8 St Andrew's Fun	18 WI
Weekend	19 Joyce's Corner
10 Isleham Society	20 Parish Council News
12 DVD Reviews; Tea & Toast	22 Churches' News
	24 Bowls Report

CONTACTS:

Editor Ed Mayall T: 01638 780839

E: ed@islehaminformer.org.uk

Features Glenda Preece T: 01638 780734

E: gjprece@aol.com

Advertising Kelvin Morgan T: 01638 781384

E: kelvin@isleham-computers.co.uk

Distribution Richard Turner T: 01638 780965

Published by Isleham Parish Council

Printed by Urban Design and Print Ltd. (<http://www.urbanprinting.co.uk/>)

NEXT ISSUE: Published 1st December 2011. The copy deadline for all editorial and advertising is 9th November 2011.

DISCLAIMER: The *Informer* would like to point out that we have neither tried nor tested all of the products and services advertised in these pages and therefore cannot accept responsibility for the veracity of any claims made.



Plumbing, Heating & Drain Services

BLOCKED DRAINS CLEARED

- Gas Boiler Service & Maintenance
- Power Flushing to Heating Systems
- Home Buyers' CCTV Drain and Plumbing Surveys
- All Plumbing & Heating Repairs and Alterations
- All Work Guaranteed

TEL: 01638 742873
MOBILE: 07932 773515
7 Ness Road, Burwell
Cambridge, CB25 0AA

MILL GARAGE

**Servicing and Repairing
All Makes and Models**

- ✓ Auto Electrics and Diagnostics
- ✓ M.O.T Preparation and Testing for class 4,5,7 and HGV
- ✓ Engine and Gearbox rebuilds
- ✓ Cam Belts fitted from £59
- ✓ Full Service from £79

**FREE PICK-UP & DELIVERY
24HR RECOVERY & HOME START SERVICE**

**12 Ely Road, Prickwillow
Tel: 07850 191 870
07909 523 116**

VILLAGE NOTES

The Parish Council have provided a number of dog bins around the village – please remember to clear up after your dogs.

Allotments available to let. Contact the Parish Clerk Mrs D Bayliss 01638 781687 for more information.

Christmas Fayre

BECKen Charity is holding a Christmas Fayre on Saturday 26th November, from 3.30pm, at Lidgate Farm.

This will be held in the barn. We will have Santa's Grotto, many stalls, Christmas hampers and gift packs. Mulled wine, hot soup and rolls, tea and cakes. Pitches will be available for hire at £5. Please contact us for further info or to book one. There will also be musical entertainment. Come along and get into the Christmas spirit.

For more information call Chris on 07990 542872/01638 780257.



Join us for a monthly breakfast/coffee/latte/cappuccino group for fun, conversation and sharing our questions of life, faith and parenthood - all welcome!

Dates: Fridays 30th September, 14th October, 18th November, 9th December (time TBC) from 9.15 (after the school run) at La Hogue Café, Chippenham. Babies and toddlers welcome. (La Hogue has great play equipment, highchairs, children's menu etc.)

For more info: Helen Banyard - 721616; Kate Peacock - 723960; www.threerivers.org.uk

Dates for Your Diary

Let us know if there is anything you would like included here for future issues.

Every Tuesday Coffee Morning at the Social Centre 9.00–12.00

October

Monday 3rd	Isleham Parish Council	7.00pm
Thursday 6th	Mobile Library Church Street Mill Street	2.15–3pm 3.05–5pm
Saturday 8th	IPSA's "Murder at the Lark"	7.30pm
Thursday 13th	WI Open Evening	7.30pm
Monday 17th	Gala AGM (see p 14)	7.30pm
Tuesday 18th	Isleham Gardeners	7.30pm
Thursday 20th	Isleham Society	7.30pm
Friday 21st	Mobile Library Church Street	9.30–10.05

November

Thursday 3rd	Mobile Library Church Street Mill Street	14.15–1500 15.05–17.00
Monday 7th	Isleham Parish Council	7.00pm
Wednesday 9th	INFORMER DEADLINE	
Thursday 10th	WI	7.30pm
Tuesday 15th	Isleham Gardeners	7.30pm
Thursday 17th	Isleham Society	7.30pm
Friday 18th	PTA Christmas Fayre	
Friday 18th	Mobile Library Church Street	9.30–10.05

INFORMATION

Thursday bus from Isleham to Ely Market

Circular route: 9.15am Limestone Close – Malting Lane – Beck Road – The Causeway – East Road – Sun Street – Church Street – West Street – Hall Barn Road – Fordham Road – arrive Ely 10.00am; Return 12.00 noon.

Fares: Adult Bus Pass Holders £2.50 Return

Adults £5 Return

Our buses are accessible to all; however, to improve customer service, wheelchair users and those with small children requiring booster seats are advised to contact Ely/Soham Dial-a-Ride in advance: Ely Soham Dial-a-Ride 01353 661161
This service is financially supported by Isleham Parish Council.

Mobile Library

1st Thursday of the month:	Arrive	Depart
Church Street	14.15	15.00
Mill Street	15.05	17.00
3rd Friday of the month: Church St	09.30	10.10

Child Health Clinic

Soham Child and Family Team Child Health Clinic will be in Isleham Village Hall with the Tea & Toast group on the second and fourth Thursdays every month from 10–11am. For more information phone Naomi Greener on 01353 624411.

Useful phone numbers

Emergency for Police, Fire, Ambulance 999
Police (Cambridgeshire) 0845 4564564
Accident & Casualty (Addenbrooke's)
. 01223 217118
Addenbrooke's Hospital (Cambridge) 01223 245151
Newmarket Hospital 01638 665111
West Suffolk Hospital (Bury St Edmunds)
. 01284 713000
Staploe Medical Centre (Soham)
- Appointments 01353 624121
- Prescriptions & Dispensary 01353 624122
- Enquiries, Home Visits, Emergencies 01353 624123
Minor Treatment Centre, Ely 01353 652162
NHS Direct (for advice) 0845 4647
Electricity Emergencies 0800 7838838
Gas Emergencies 0800 371787
Water & Sewage Emergencies 0345 145145
Social Services - office hours 01733 561370
- out of hours emergency 01733 561370
Refuse Collection 01353 863864
RSPCA 0870 5555999
Citizens Advice Bureau Ely 0845 130 6442
Mildenhall 01638 712094
Newmarket 01638 665999
District Councillor (Derrick Beckett) . . . 01638 780476
Isleham Village Hall (Diane Bayliss) . . . 01638 781687
Parish Council (Diane Bayliss: Clerk) . . 01638 781687
Member of Parliament (Jim Paice) . . . 01954 211450



HIS 'N' HERS SCHOOL OF MOTORING

DAVID EAVIS A.D.I. & SARAH EAVIS A.D.I.

- BOTH INSTRUCTORS 20 YEARS EXPERIENCE
- STUDENT AND BLOCK BOOKING DISCOUNTS
- PATIENT, RELIABLE, D.S.A. QUALIFIED INSTRUCTORS

WWW.HISNHERSSCHOOLOFMOTORING-

CAMBRIDGE.CO.UK

TEL: 01638 781214



KAREN'S GROOMING

*All your pet's grooming
requirements on your
doorstep*

01638 781791
07803 548673
07835 813027



ISLEHAM PAPER, PATCH AND SEW



Calling all crafters!

Feel free to come
along whatever your craft!

2011: 15th October, 3rd December

2012: 7th January, 3rd March, 12th May,
7th July, 11th August,
8th September, 10th
November

All are on Saturdays from
9.30am to 4.30pm in the
High Street Church

Feel free to come along
at any time for as long as
you like.



Coffee and cake
provided, bring your own
packed lunch.

Newcomers always very
welcome!

Contact:
Julie Porter 781390
Victoria Rattle 721128



MIKE & GINA MISSING
WELCOME YOU TO

The Griffin

REAL ALES
REAL FOOD
REALISTIC PRICES

NOW SERVING SUNDAY ROASTS
12 NOON TO 2PM

PLEASANT GARDEN WITH
CHILDREN'S PLAY AREA AND AVIARY

FREQUENT LIVE MUSIC

FOR FURTHER DETAILS SEE
WWW.THEGRIFFINISLEHAM.CO.UK

CHURCH STREET, ISLEHAM
01638 780447

Village clubs: information

CLUB	CONTACT	TEL	DAY/DATE	TIME	PLACE
Angling Society	Ivan Houghton	01638 780333			
Board Games	Alison Young	01638 780351	Last Thursday	2–5pm Sept–June	High St. Church
Book Club	Deidre Deller	01638 780544	2nd Friday	2pm	Social Centre
Brownies	Caroline Zwierzchowska-Dod	07766 336694	Thursdays	6–7.15pm	Village Hall
Busy Bees	Kelly Chawner	01638 781098	Tuesdays	9.30–11.30am	Village Hall
Craft Club	Hazel Thompson	01638 780633	Tuesdays	1.30–4pm	Social Centre
Cubs	Angela Dann	01638 781947	Tuesdays	6.30–8pm	Village Hall
French Conversation	Francine (all levels)	francine@the waytofrance.com	Monday	6–7.15pm	1 Mill St
Gentle Armchair Exercise	Kathryn Kyte Lorraine Buchnall	01638 780652 01638 780699	Mondays	2–3pm	High St. Church
Guides	Janine Taylor Caroline Hinitf	islehamguides@ yahoo.co.uk	Tuesday	6.30–8.30pm	Social Centre
Isleham Gardeners	Jenny Hodd	01638 780729	3rd Tuesday	7.30pm	Village Hall
Isleham Society	Vernon Place	01638 780449	3rd Thursday	7.30pm	Village Hall
Just Jhoom! Fitness	Hayley Crawford	01638 721522 www.halohf.co.uk	Wednesdays	7.30–8.30pm	Village Hall
Paper, Patch & Sew	Julie Porter Victoria Rattle	01638 781390 01638 721128	Saturday Bi-monthly	10–4pm	High St. Church
Tea & Toast	Claire Freeman	07827 234442	Thursdays	9.30–11.30am	Village Hall
WI	Glenda Preece	01638 780734	2nd Thursday	7.30pm	Village Hall
Yoga	Jill Bercovici	01638 510801	Thursdays (term-time only)	9.15–10.15am	Bowls Club
Zumba Fitness	Michelle Jacobs	07842 112190	Fridays	6.30–7.30pm	Village Hall





What's on for FREE for families with children under five at Soham Children's Centre, next to Weatheralls Primary School

Blissful Babies Every Tuesday 1.30–3.00pm. A relaxing sensory experience for babies with lights, music, toys and more. To book your place and more information call 01353 727188

Breast Friends Breastfeeding support group meeting every Tuesday 11.30am–12.30pm. For new and pregnant Mums. Pop in for some free advice and support from a Lactation Consultant.

Baby Clinic Every Tuesday 9.30–11.30am. Weigh the baby and have tea and a chat with the Health Visitor about any worries or concerns.

Stay & Play Every Monday 9.30–11.00am at St Andrew's Extended School Unit. A free play session with lots of activities and fun. Just turn up!

Time Out Tuesdays For parents under 25 years. Every Tuesday 9.30–11.30am. Come along and make friends, have a chat and get support and information.

Isleham Tea & Toast Every Thursday at Isleham Village Hall, 9.15–11.30am. Pop along for some tea and toast, a play session for the under 5s and a chance to meet other mums.

Dig It A chance for you and your children to learn how to grow your own fruit and veg on a Soham allotment. Every Wednesday 9.30–11.30am. Meet at Soham Children's Centre. Ring to book a place.

For more information call us on 01353 727188
sohamchildrenscentre@cambridgeshire.gov.uk www.cambridgeshirechildrenscentres.org.uk

Continued on from Front Page

Wreckers is the first feature film from writer/director D.R. Hood, and is produced by Simon Onwurah. *Wreckers* was filmed in London and Isleham back in 2009, and – as is the way with low-budget work – has just been completed. Happily, the actors have done very well since filming *Wreckers*!

The film will be released in the UK by Artificial Eye with Content Film as international sales agent. We are delighted to announce that *Wreckers* world premiere will take place on 16th October at the 55th BFI London Film Festival, with further showings on 18th and 21st October. UK theatrical release and day-on-date release with Curzon on Demand are planned for December 2011. This means that from December you will be able to 'stream' the movie on your computer if you have broadband.

http://www.bfi.org.uk/lff/films/new_british_cinema/1850

www.facebook.com/wreckersthemovie

http://www.curzoncinemas.com/film_on_demand/

WRECKERS - SYNOPSIS

What lie will you live?

Dawn (Claire Foy) and David (Benedict Cumberbatch) have moved back to the village where he grew up to start a family. Their relationship seems idyllic, but getting pregnant is proving difficult and adding to the strain of building their perfect home.

Out of the blue, David's younger brother Nick (Shaun Evans) appears. A soldier on leave, Nick sleepwalks and is prone to dark moods, yet Dawn is affected by her

brother-in-law's vulnerability, and they start to spend an increasing amount of time together. Gradually, buried incidents from the brothers' shared history start to reveal themselves, forcing Dawn to confront the question of whether she really knows her husband at all.

"Featuring compelling performances from an exceptional cast of young actors, and evocatively filmed in lush fields, eerie churchyards and desolate rural houses, the debut feature from D.R. Hood is a haunting tale of secrets and lies in the English countryside." (Michael Hayden – London Film Festival programmer).

CAST

Claire Foy – Dawn

Claire came straight out of drama school to play Amy Dorritt in the BBC's *Little Dorritt* and then starred opposite Nicholas Cage in *Season of the Witch*. Most recently she has starred in Channel 4 mini-series *The Promise*, directed by Peter Kosminsky, followed by *Nightwatch* and the upcoming *White Heat* for the BBC.

Benedict Cumberbatch - David

Benedict's prolific career includes *Atonement*, *The Other Boleyn Girl* and, most recently, *Sherlock Holmes* in the BBC's *Sherlock* with Martin Freeman, and roles in Spielberg's upcoming *Warhorse* and *Tinker Tailor Soldier Spy*. He has also just starred in Danny Boyle's acclaimed *Frankenstein* at the National Theatre.

Shaun Evans - Nick

Shaun starred in *The Take* with Tom Hardy, and played Annette Bening's young lover in *Being Julia*. On stage he was a brilliant Kurt Cobain in *Sid*



and Kurt in the West End; he has just been cast as the young Inspector Morse in the prequel to the series.

Peter McDonald - Gary

Peter starred in BBC Films' *When Brendan Met Trudy*. On stage, Peter starred in the Old Vic's *Dancing at Lughnasa*, and played opposite Jonathan Pryce in *The Caretaker* last year. Peter has also recently directed award winning short film *Pentecost*.

Sinead Matthews - Sharon

Sinead starred with Daniel Mays in *Half Broken Things*; she was Miss Cliff in *The Boat that Rocked*. She starred in the BBC's *In Love with Barbara*, playing the young Barbara Cartland. Sinead is also an accomplished stage actress, most recently seen in the National Theatre's *Our Class* and Mike Leigh's *Ecstasy*.

PRODUCTION TEAM

D R Hood - Writer/ Director

Hood directed multi-award winning short films *The Other Man* with Anna Maxwell Martin (Edinburgh Short Film Award 2006) and *Journey Man* with Ruth Madoc, which showed in festivals worldwide after its London Film Festival premiere, won many awards and had UK cinema release. She was a selected writer on Warp Films' Re-Animate scheme 2010. Her twisted rom-com *Over and Under*, was recently a finalist for the iFeatures scheme.

Simon Onwurah – Producer

Simon has produced across many genres, drama, factual and entertainment, including the Royal Television Society award winning *Who Stole The Soul?* (BBC). Simon has produced work for national and international networks including BBC, C4, More 4, ITV, Five, HBO, PBS and M-Net. He is working with Hood on their next project, comedy feature *Over and Under*.

Annemarie Lean-Vercor – Cinematographer

Annemarie studied cinematography at the National Film and Television School where she won the Kodak Student Commercial Award in Cinematography. Recent projects include shooting a section of Michael Winterbottom's feature *Seven Days* and shooting on feature docs *Erasing David* and *Moving to Mars*, directed by Mat Whitecross.



A crew member takes a well-earned break to dip his overheated toes in the Lark.



Cat Care by Cat Lovers

Built and managed to
Feline Advisory Bureau standards
All family size chalets
Inspections always welcome

Opening hours
Mon-Sat: 10:00-12:00 and 2:00-6:00
Sun and Bank Hols: 11:00-3:00
57 Waterside, Isleham, Cambs CB7 5SH
Web: www.isleham-cattery.co.uk
Tel: 01638 781367
email: lorraine@isleham-cattery.co.uk

St Andrew's Bank Holiday Fun Weekend



in the fully flagged Social Centre garden (thanks Walter!) and the wonderful array of homemade cakes and sandwiches, Tombola and Grand Prize Draw. There was also a good turn out for Sunday's Fun Day with games, Cream Teas, Pimm's and Treasure Hunt, with many of the young, and not so young, having their faces painted and winning prizes. The Treasure Hunt result was tight but Hunt Master, Derek Farmer, judged Team Patterson the victors, winning, among other things, their own kind donation to the treasure chest prize

A big thank you to everyone who joined us in raising much needed funds for the continuing upkeep of the church, and replacing the recently stolen lead and copper.

Despite the changeable weather many enjoyed sitting

back. We'll be happy to have it again next time Clive! 'Jammy' Pauline Wilkes guessed the exact number of balloons in the car and Grand Prize Draw went to John Aves.

Gill Pederson



Monday	Tuesday	Wednesday	Thursday	Friday
6.30–7.30pm	6.00–7.00pm	6.00–7.00pm	6.15–7.15pm	6.30–7.30pm
Victoria Hall	Millennium Centre	Millennium Centre	Village Hall	Village Hall
Fordham	Red Lodge	Red Lodge	Chippenham	Isleham

CHRISTMAS GIFTS???? VOUCHERS FOR CLASSES AND MONTHLY PASSES!
ZUMBATOMIC! KIDS ZUMBA COMING TO YOUR VILLAGE! CALL FOR INFO!

£5 per class or £35 per month for all classes! Contact: Michelle 07842 112190

Email: Michelle@healthyworkingminds.co.uk

Facebook: "Zumba Isleham" or "Zumba Red Lodge"

Festival of Light 2011

Saturday 10th December
3.30 – 6.30

Tree Display and Christmas Bazaar

Sunday 11th December
3.30 – 6.30

Saturday 17th December
3.30 – 6.30

Tree display and refreshments in church

Sunday 18th December
3.30 – 6.30

**Including a
Family Carol Service 4.00
All welcome**

**If you would like to display a tree
or wreath this year contact:
Sheila Taylor on 780701 or
Sheila_karma_farm@hotmail.com**

Firm Foundations Day Care



Tel: 01638 781616

Flexible Care 0-12 years.

Open all year 7.30 am-6 pm.

Friendly, experienced, qualified staff.

Safe, secure nurturing care.

15 hour free grant sessions for 3-4 year olds,
10% Sibling Discount.

Balanced, meals cooked daily.

Quality care, reasonable price

Abundant parking & play space

It's about the process, not the product.

www.firmfoundationsdaycare.co.uk

Isleham Road, Worlington, B.S.E. IP28 8SW

S. W. Downey Electrical Contractor

42 Years' Experience

Domestic and Commercial

City & Guilds Qualified

Free Estimates

07786 108673

01638 781169

LANGTRY FITTED FURNITURE

L
F
F

EXTENSIVE RANGE OF KITCHENS AND BEDROOMS



BESPOKE & HANDMADE FURNITURE

SHOWROOM OPENING HOURS:

7am to 5.30pm Mon - Fri
9.30am - 4.30pm Sat

Unit 24, Northfield Business Park,
Soham, Ely, Cambs. CB7 5UE
(Behind Scampers)

Tel: 01353 725380

Fax: 01353 725384

**Out of hours phone:
Tony on 07738559569**

- From Design to Completion
- Supply & Fit or supply only
- Top Brand White Goods
- Bespoke Sizes to fit any Kitchen & any budget
- Free Design service

www.langtryfurniture.co.uk

**Finally, a guaranteed solution
for your flat roof problems,
proven to last over 40 years!**

Does your roof suffer from any of these signs?

- Moss growth • Cracks or bumps • Leaks • Expired guarantee •
- Or is it more than 5 years old?

**Stop! Replace it now, replace it permanently
and prevent misery from a leaking roof.**

Before



After



Unlike felt, RubberBond EPDM will not split, leak or crack and it's tough enough to walk on. Installed in full compliance with the revised Building Regulations of April 2006!

RUBBERBOND
EPDM ROOFING
APPROVED INSTALLER

WHITEHALL
Flat Roofing

Call **NOW** for your **FREE**, no obligation quotation - valid for 12 months.

01638 507730

Lines open 24 hours a day, 7 days a week



www.whitehallflatroofing.co.uk

The Isleham Society



Photo by Vernon Place

Flight deck of the KC135

19th July We visited the Mildenhall Air Base starting with a demonstration by the Dog Handling section showing the sniffer dogs in action followed by the guard dogs showing how they would apprehend any intruder – I would not recommend breaking into the Air Base with these dogs on patrol!

nwlTltd - IT Solutions

www.nwitltd.co.uk

nwlTltd provide a wide range of computer support for home users and small businesses.



Install, Upgrade & Repairs on all makes of PC and Laptop plus much more...

No call out fee and all services have a fixed price from £25!

Delivering a fast, friendly and professional service straight to your door.



Contact Nigel today for help or advice on:

01638 780123/07538 023288

support@nwitltd.co.uk

Available Monday to Saturday (inc. evenings until 10pm)

After lunch at the Galaxy Club we had a Power Point presentation on the role of the KC135 refuelling by a pilot and a boom operator before boarding one of the planes to try out the pilot's seat and the "couch" of the boom operator. We were impressed by the hospitality and information given to us.

21st July Ian Ellwood gave a very interesting illustrated talk on "The development and growth of D.S. Smith Packaging" (formerly Tillotsons Corrugated Cases and St Regis at Burwell) It was interesting to see how modern and efficient the plant is, as

well as how few people were needed to run the plant. Ian also showed a video he had made of the factory at work – when we go past the factory we now know what the inside looks like!

14th September We had a guided tour of the Donarbon Waste Management (now called 'Amey-Cespa') Site situated off the A10 near Waterbeach on a 500 acre site. They sort out all the rubbish collected from East Cambs as well as from other authorities; this amounts to around 300,000 tonnes of waste of year. The organic waste is made into soil improver (they are not allowed to call it compost!). Gardeners note: this can be collected free of charge as long as you take a shovel and the bags to put it in. They also separate glass, paper, metal, plastic, rubber and other things to be recycled. All the waste unable to be re-used is buried into landfill cells, which are designed to safely contain rubbish, not allowing it to pollute the environment but saving the methane gases. The public are able to visit this establishment for a tour and school visits are welcome and encouraged, we found our visit most interesting and worthwhile. Our day was rounded off with a splendid lunch at 'The No Hurry Inn' at Upware. A big thanks to Betty Ashley for arranging both the July and September outings.

Future Events

20th October A welcome return visit of Trevor Burlingham: "With a Camera around Breckland"

17th November Dr Alistair Burn of Isleham: "Fenland Washes and Other Places of interest"

19th January Peter Jackson from Scotsdales Nursery: "Grow your own Fruit and Vegetables"

16th February Vernon Place: "Old Isleham Photos 5"

You don't have to be a member to attend our meetings, all visitors are welcome!

*Vernon Place
Chairman of The Isleham Society*

*Lyn Kiernan and her team extend
a warm welcome to you at their*

UNISEX HAIR SALON HAIR 2000

Ladies', gentlemen's and children's hairstylists

- **Established in Cambridge for 30 years!**
- **Competitive prices**
- **Experienced stylists**
- **OAP special rates on Mondays and Tuesdays**
- **We offer a wide range of perms, colours, hi-lights, low-lights, cutting and styling**
- **Cut & blow-dry from £23.50; perms from £35**
- **Lyn on Wednesdays**
- **Marion, Carla and Hayley on Saturdays**

**Call in and see us at
4 Church Street, Isleham
or phone 01638 780800**



Green Wood

Tree Surgery

Fully insured | Fully equipped | Free estimates | Emergency call Out

**City &
Guilds
NPTC
Qualified**

01638 780188

www.greenwoodtreesurgery.co.uk
info@greenwoodtreesurgery.co.uk

ANDREW MYSON

Building & Garden Maintenance

(Painting & Decorating, Garden Clearance,
Gutter Clearance, Floor & Wall Tiling, Etc)

Free Estimates!

No Job Too Small!

All Work Guaranteed!

Tel: 07775673480

a_myson@yahoo.co.uk

24 Hall Barn Road, Isleham



FARR PAINTING AND DECORATING

Andrew Farr

14 East Fen Road, Isleham,

Ely, Cambs CB7 5SW

Tel: (01638) 780375

Mobile: 07768 328387

Email: andy.farr@live.co.uk



Interior and exterior
painting and
decorating.

Paper hanging.
Commercial and
domestic.

25 years experience.

Free estimates.

STAR
Curtains
interior craftsmanship

**Curtains * Blinds * Fabric
Nets & Voiles * Upholstery
Cushions * Poles & Tracks**

- **FREE** home measuring service
- Wide range of great value fabrics
- Customers' own fabric can be used
- Bespoke roman blinds our speciality
- Any questions?
Just call us on **01638 578700**

20
years
1989-2009

Open 9am-4pm Monday to Thursday
and Friday 9am - 2pm (or by appointment)

www.starcurtains.co.uk

Unit 2B, Swan Lane Business Park, Exning, Suffolk CB8 7FN



DVD Reviews

In a new, and hopefully regular, feature, Isleham's answer to Claudia Winkelman, Michaela Farr, gives her view on some recent arrivals on the small screen.

This month's new DVD releases proves it to be a great time to crash in front of the TV and hide from the winter weather we all feel coming on. September brought the likes of some great follow-up films such as *Transformers: Dark of the Moon* and *X-Men First Class* but October brings the film a lot more people were talking about; *Pirates of the Caribbean: On Stranger Tides*.

The new *Transformers* film was a real treat if you like action films and, of course, if you enjoyed the first two. This film has a new addition to it, British actress/model Rosie Huntington-Whiteley starring as Sam Witwicky's new girlfriend. She adds the beauty to this film and the trace of a love story every good film needs to attract a female audience. I found that this film engrossed everyone in the cinema at all times. During the action everyone would jump and when it all goes wrong everyone was in silent in anticipation. It also has those funny characters that turn a good film into a great film. Characters such as Jerry Wang



played by Ken Jeong from *The Hangover*, and Mr and Mrs Witwicky and the two funniest robots in town: Wheelie and Brain. In my opinion this is a must-see action film and it puts a great twist on the history of the moon that we all thought we knew.


Pirates of the Caribbean: On Stranger Tides is not a classic of the franchise. Johnny Depp's most loved character was back, but not with a bang, more of a fizzle. The sexy Spanish Penélope Cruz replaced the two missing actors, Orlando Bloom and Keira Knightley very well except for the epic love story the two of them had. This film did miss the two of them and wasn't as good as the first three *Caribbean* films. This film did make me laugh and I still would rate it higher than many other films. The plot concerns the race to find the Fountain of Youth between Captain Jack Sparrow and the evil Black Beard. This film is a good film to watch if you had some spare time or to borrow off a friend but I wouldn't be too worried about rushing out and buying it today.

A comedy that is being released this month is the brilliantly funny *Bad Teacher* starring Cameron Diaz, Jason Segel and Justin Timberlake. This film is about a lady who had it all, losing it all and who was forced to become a teacher, which is something she does not want to have to do. This foul-mouthed teacher then tries to get herself some more money by going after a colleague, which upsets some of the other members of staff. The characters in this film are hilarious and played so well by all the actors; they must have had fun filming it. This film had me smiling all the way through and it has a happy ending; what more could you ask for?



Michaela Farr

an exceptional spray tan
that exceeds all others




Here are just a few of the many great reasons why a SiennaX spray tan will exceed all your expectations:

- exude confidence – look and feel gorgeous
- extra safe – the only safe tan is a sunless tan
- exquisite ingredients – to nourish & care for your skin
- extremely natural colour – for that 'holiday tan' look
- experienced therapists – fully trained to tan you to perfection
- express application – look fab in less than 15 minutes

Never had a SiennaX spray tan before? Call your therapist to book now – you'll wonder why you waited so long!

Full body mobile spray tanning in the comfort of your home £20

For more details or to book your tan please call Louise on 07591 105722



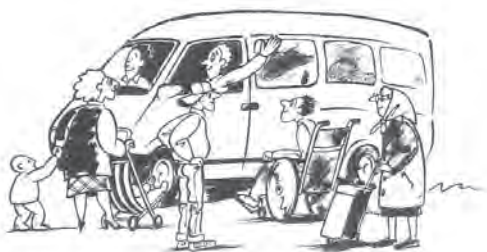
TEA & TOAST

Isleham Village Hall
Every Thursday morning
9.30 to 11.30am

Free drop-in and play session for parents and carers with children 0-5 years. Come along with your children and join in the fun. It's a great chance to meet other parents and carers whilst letting your children experience new toys and activities. No need to book. Just turn up.

Call 01353 727188 or email sohamchildrenscentre@cambridgeshire.gov.uk for more information.

Ely Soham Dial-a-Ride



**Do you have trouble getting out and about?
WE CAN HELP**

The Affordable Community Bus

Our minibus service collects you from your door and takes you to Ely or to other local destinations. The driver will help you in any way you require including carrying your shopping to your door. All our minibuses carry wheelchairs, walkers, baby buggies etc.

You can use this service to:

- Do your weekly shopping
- Attend that essential medical appointment
- See friends and family in nearby villages
- Get to leisure facilities
- Access the public transport system

We operate in Isleham on Mondays, Thursdays and Fridays.

Excursions

We offer over 22 excursions each month, which include:

- Pub lunches
- Trips to regional shopping centres e.g. Newmarket and Cambridge
- Norfolk and Suffolk coasts
- Theatre trips and places of interest

To contact us

Telephone 01353 661161 (24 hour answer phone: our office is open from 8.30am to 5.00pm Monday–Friday)

Email office@esdar.org.uk

Website www.esdar.org.uk

ANGLIA GAS & ELECTRICAL SERVICES



Sales • Service • Repairs • Installations

NG/LPG Gas Boiler/Central Heating Systems
NG/LPG Gas Appliances/Dual Fuel Appliances
NG/LPG Landlord Safety Checks
NG/LPG Residential Park Homes/Caravans
Electrical Appliances/Portable Appliances Testing
Essential Electrical/Plumbing Maintenance

Contact: Jim Perry Phone/Fax: 01638 741432

Mobile 07768 856456

email: jimperryages@ntlworld.com

W.R. PARR

Antique Furniture Restorers

Established in Cambridge 1928



Station Road, Isleham

01638 780080

www.furniture-restored.co.uk

All aspects of furniture restoration and repair work.

- | | |
|-------------|--------------------|
| ■ Marquetry | ■ French polishing |
| ■ Turning | ■ Carving |
| ■ Veneering | ■ Upholstery |

**If you need local accommodation
for visiting family or friends**

For details contact:

gill@sunsetely.com

www.sunsetbb.co.uk

01638 780549

SunsetBed&Breakfast

6 Station Road, Isleham, Ely, Cambs CB7 5QT

Buy British... Buy local...

www.thompsonsfarmisleham.co.uk



Thompson's Farm Meat

Fenrose Farm,
1 Fen Bank, Isleham
Tel: 01638 780994

Quality beef, pork, bacon, ham, and free range chicken, from our traditional family-run farm

**Stall open EVERY
Saturday morning
8am – noon
next to Priory Garage**

Shop on Farm Open
Tuesday & Thursday 3pm-6pm
Friday 3pm-7pm
Saturday 10am-4pm
Sunday 10am-noon
Visit our website for news on
fresh meat deliveries



**Place your
Order
NOW
for
Christmas.**

Buy from the farm gate

PROBLEM WITH A FLAT ROOF OR GUTTERING?



REPLACEMENT OR
REPAIRS AND GUTTERING
MAINTENANCE.

Contact **LLOYD BENNETT**
Local Experienced Grade A Roofer - 25 Years
for FREE Advice & Estimates

LJB ROOFING SERVICES

Call us now **01638 780452** Mobile **07599 124357**



Gala AGM

The AGM of the Gala Committee will take place at The Griffin on Monday 17th October 2011 at 7.30pm. As reported in the last edition of the *Informer*, five members of

the Committee have stepped down, and new blood is required

If you are interested in helping keep up the tradition of a Gala in Isleham and are able to help, come along.

The Committee meets on the third Monday of each month from January to July, and meetings last for about an hour.

Fred Preece, Chair

01638 780734, fpreece2@aol.com



Well, the nights are drawing in and it's getting to that time of year when things are starting to slow down and it's no different for the Reserve. We have a few work parties set up for the up and coming months when we will be tidying up the site ready for the winter months.

Our first work party is set to be on Saturday 15th October, when we will be clearing away the grass etc. from the railway line after it has been cut, ready for the winter months, and we will be cutting back the track way that takes you down to the car park. We hope to organise a second work party for November (date to be confirmed) as we are trying to get the Wildlife Trust to come over and help us cut back some more areas in the reserve. And lastly, we are doing one on Saturday 18th February: just a tidy up of the site ready for the new season in 2012.

We would love it if you think you could help out with any of these dates even if it is for an hour or two. E-mail me at cambeth@tesco.net if you are able to volunteer your time.

The Friends of Isleham Nature Reserves also organised a night out at the reserve for the children who attend Cubs and Guides in the village. On Tuesday 13th September, the cubs and guides joined the wildlife trust to go on a Bat Night,

To find out what they got up to then you will have to wait until the next edition of the *Informer*.

Personally I would like to say a big THANK YOU again for all your support.

Andrew Garbett

Warden of Friends of Isleham Nature Reserves

Isleham WI OPEN EVENING

Demonstration of Flower Arranging

by

Mr. Nicholas Godfrey-Cole

of

'Scent With Love', Hunstanton

a regular exhibitor at
Sandringham Flower Show

Isleham Village Hall

Thursday 13th October

7.30pm

Doors open 7pm

Admission £7.50

Including cheese and wine

Tickets available from Mrs J. Pope

01638 780380

all welcome



Community Centre Update

Major Milestone Achieved!

Following several years of planning and hard work by the ICA committee, as you read this, the Community Centre project has gone out to tender and we are awaiting prices from our five preferred contractors. Once these have been received they will be assessed by the Architect and the Quantity Surveyor, and a recommendation will be brought to the Parish Council for final approval. A public meeting will be held as previously agreed before the final contractor is chosen.

Until the tender prices are received we are unable to proceed fully with grant applications as most grant providers require full costings as part of the application, so this is a very significant time for the project. When the contractor has been appointed it will be 3–6 months before we begin the building; this time will be used for grant applications and seeking the remainder of the funding. The Public Works Loan, which was approved by the council earlier in the year, will also be applied for during this period.

Once the project has begun it is expected to take 48 weeks to complete so hopefully the Centre will be open by the spring of 2013.

The pavilion will remain in place until approximately five weeks before the end of the project so that sporting activities can continue unhindered as far as possible. The Village Hall will be demolished 20 weeks before the end of the project to allow for essential services to be routed through to the new centre avoiding the tree roots. The council have explored many possible routes and scenarios and these would seem to be the most cost effective for the project and the least disruptive to the community as possible. Local groups will be contacted in advance of the hall closure so that we can help find other temporary accommodation while it is closed.

In an effort to improve communication it has been decided that the existing ICA website (www.islehamca.co.uk) will be forwarded to the Isleham village website (www.isleham-village.co.uk). Hopefully this change will provide more up-to-date information on the progress of the project with greater accessibility for the whole community.

Anyone interested in assisting with fundraising or grant seeking for the new Centre please contact the Parish Clerk Diane Bayliss on 01638 781687.

Clive Patterson for the Parish Council/ICA





Priory Garage



★

Used car sales

★

Renault Authorised repairs

★

MOT testing

★

Service & repair ~
all makes & models

★

Tyres

★

Exhausts

★

Batteries

★

Air-conditioning service &
repair

★

Priory Garage
Church Street, Isleham,
Cambs CB7 5RX
01638 780352/780625

www.manchetts.co.uk



Aerial view of the crash site to the north of Beck Road and east of Sheldrick's Road.

In view of its close proximity to the huge USAF airfields at Mildenhall and Lakenheath, Isleham is no stranger to the sound of aircraft flying overhead, a fact of village life for over 60 years. Today those aircraft sounds are of high powered jets such as the KC-135 Stratotankers from RAF Mildenhall and the F-15 Strike Eagle fighters from RAF Lakenheath. The aircraft sounds in the immediate post-war years, however, still included many piston-engined military aircraft.

On Thursday 13th October 1949, the 43rd Bomb Group was scheduled for a routine training mission that was to last for 10 hours. At briefing pilots had been told that there would be a formation take-off, assembly, climb to 25,000 feet, break up the formation then drop 16 500 lb high explosive bombs individually on the bombing target at Heligoland, then from there to the radar bombardment system (RBS) target at Heston, for RBS runs until the RBS site closed, and then return to Lakenheath in the evening. It was a typical autumn day in the United Kingdom. There was a low overcast, the base at a height of only 300 feet or so, which extended to height of around 1,100 feet, completely obscuring the sky from the ground. Visibility was restricted to only three quarters of a mile in fog, the temperature was a cool 54°F. The relative humidity was 100% with surface winds of 11 mph at 250°.

Instructor Major George H. Ingham, pilot of B-50 Superfortress 46-060 (6060), reported that everything was OK and acknowledged that he was taxiing into position for take-off at the end of 25 runway. 6060 lined up and contacted ground control unit (GCA) when in a take-off position. 6060 took off at 9.25am. Ingham reported that he was at 500 feet and that it was OK for the next aircraft, 6042, to take off. About a minute later Sgt. Dees in the GCA trailer, having returned to his search scope, observed that 6060 was 3½ miles out,

called and said, "60 should be on top 3½ miles out." There was a few moments pause and the reply came in a normal voice "60 on top at 1100 feet indicated." He noted 6060's position at five miles out at the time of reply and "almost immediately heard an excited scream and some unintelligible chatter." Bacon in 6039 was in a much better position to understand the transmission as he was airborne and much nearer to 6060. Bacon had heard GCA call Lakenheath control tower that 6060 should be breaking clear on top. At this Bacon heard a voice, which he recognised as Major Ingham's, 'in a very jovial manner' report to GCA that he was 'still in the soup' (i.e. still in the overcast). About 30 seconds after this Bacon heard Major Ingham report that 6060 was 'on top, everything OK'.

Another minute, to a minute and a half, elapsed. The transmissions were noted in the control tower by Lt. Mattson – "Red hat leader to Red hat 3", and Major Ingham was then heard to start a normal transmission, to Bacon, "6039 this is..." followed by a break of a few seconds after which Ingham's voice was again heard but was now agitated and very excited, "Look at that son-of-a-bitch..." he said, followed by another break of a few seconds then he transmitted, still in an excited voice, "Shut the damned thing off." During this time Bacon had turned 6039 to the right (180°) to come back over the homing beacon to join the formation.

The day in the village of Isleham had got off to a normal start and young Vernon Place was preparing to cycle to the bank, whilst others were already at work. In view of the limited visibility, Vernon could not see the aircraft but he did hear the engine noise and it did not sound normal. Elizabeth Brown was standing on the land at the rear of her home at Broad View, Beck Road, Isleham at about 9.30am that day, talking with girls. She became aware of the sound of a multi-engined aircraft overhead and looked up in the direction of Mildenhall. "Look! It's on fire", she said, "It looked like a ball of fire," she later recalled, describing the last moments of 6060. She turned and ran back towards the house and heard a loud explosion.

Two farming brothers, George and John Thornalley, were working at the far end of the sugar beet field beside the back road of Isleham, when they heard the aircraft. They stood and looked for it. George said that he could see along the ground for about a half mile, but could see up no more than a hundred and fifty feet. From the sound of the engines he could tell that something was wrong. When he first saw the plane it was almost a hundred feet high and in a nose dive, almost straight down. The aircraft appeared to have

come from the direction of Isleham. George could see fire but could not tell what part was on fire. However, John stated that the right wing was on fire before, realising the plane was going to crash, he fell on the ground and covered his head with his arms. To George the aircraft "appeared to be broken" but he thought that could be due to "the angle I was looking at it." He heard one explosion after it hit the ground followed by a "big blast of flame." The next thing he knew he was on the ground, then he and his brother "ran around the burning plane to the farm building", a shed where the farm implements were stored. He could see that there was no hope for anyone in the plane. John had heard "the engines throb a couple of times" and the aircraft came into his view just before it crashed. He noted that the bomber struck in a "near vertical position." A haystack very near the shed was on fire and rounds of ammunition were exploding for several minutes.

Local civilians were first on the crash scene, which was just southeast of Isleham in a field of stubble at Lee Farm, Beck Road, Isleham. The first Americans on the scene were crash truck personnel from RAF Mildenhall, the nearest airfield who arrived at 10.00am. The fire was extinguished by 10.30am. The aircraft had been carrying 6,000 gallons of fuel and sixteen 500 lb bombs. On arrival the fire crew found that the plane had exploded at the point of impact and was completely demolished. There were small individual fires burning over an area of five acres. The ground area at the crash site was flat terrain. The crash crew reported that on arrival the weather was foggy, temperature was 60°, the relative humidity was 90%, wind direction 240°, velocity 9 mph. The obvious cause of this crash was a fire in flight, although what caused the fire could not be determined in view of the total destruction of the aircraft and the entire crew being killed. This aircraft type had been plagued with oil leak and exhaust problems and it is likely that this was the cause of the fire.

News of the crash made the national newspapers on Friday 14th October 1949, the heading in The Times reading **12 KILLED IN U.S. BOMBER – EXPLOSION SHAKES A VILLAGE.** The U.S. 3rd Air Division headquarters at Ruislip, Middlesex, issued an official press statement – "A B 50 strato-bomber of the U.S.A.F. stationed at Lakenheath crashed and burned out about a mile south-east of Isleham at 9.25 a.m. to-day. According to officials of the 3rd Air Division, wreckage indicated that there were 12 people on board. So far 12 bodies have been recovered. Weather at Lakenheath was three-quarters of a mile visibility with fog. The forecast weather in the vicinity of the crash was one-eighth of a mile visibility." The report ended with the fact that 'the aircraft had crashed in a field of stubble. Several stacks were set on fire. A crater about 30ft. long and 20ft. across and about 10ft. deep was formed. R.A.F. and U.S.A.F. salvage workers sorted out the wreckage, which was strewn over a wide area. American Army security police formed a cordon.

"Villagers said that the aircraft came from the direction of Lakenheath and as it flew low over the village it was a 'mass of roaring flames'.

"The B 50 bomber is one of the latest long-range

operational heavy bombers in the U.S.A.F. The first of those now in Britain arrived in August for the 90-day training period which the American 43rd Bombardment Group is undertaking at United States air bases in England. The B 50 is an enlarged, more powerful version of the B 29. It has a 141ft. wing span and is 99ft. in length. Some details are still on the secret list, but it has been stated that it is powered by four 3,500 h.p. engines and is capable of a top speed of about 400 m.p.h. The B 50 is one of the aircraft selected to carry the atom bomb."

A brief report in The Times of Saturday 15th October 1949 followed up with the heading **R.A.F. MAN DIED IN U.S. BOMBER** and reported that R.A.F. signaller D.J. Garrett, stationed at Lakenheath, was among the crew of 12 who died in the crash. A provisional inquest on Garrett had been fixed for that afternoon.

Stewart Evans

Energy Meters

Got better things to spend your money on than electricity bills? Borrow an energy meter from any Cambridgeshire library free of charge and find out how you could cut your electricity bills by as much as 15%. The meters are easy and safe to use and show how much electricity is being used in your home at any one time. Using a meter can help you see just how much energy is used, for example, by lights in empty rooms, appliances on stand-by or boiling a full kettle. Armed with this information, studies show that households can reduce their bills by 5–15% by making small changes to use less electricity. Ask to borrow a meter at your local library today and start planning what to do with your savings!

Green Tip: We all have an impact on the environment through our use of resources and burning fossil fuels for everyday activities such as driving cars and heating our homes. For various tips on how to reduce carbon emissions in the home, check out the Environment Agency website at the following address: <http://www.environment-agency.gov.uk/homeandleisure/climatechange>

Fiona Riggall, Direct line: 01223 715673
Environment and Climate Change Officer
Cambridgeshire County Council.

Professional Building & Landscaping Services



ALL LANDSCAPING, BLOCK PAVING, DRIVEWAYS, PATIOS, FENCING, DECKING, TURFING etc.
Professional from start to finish
We are members of the:
Federation of Master Builders
and **TrustATrader**,
and are on the **Marshall Register**.
References available on request.
For estimates and bookings call:
01638 721893 or 07789 261266
www.ams-refix.co.uk

Pooley Bendall Watson SOLICITORS

For a friendly and professional approach

- Domestic & Commercial Property
- Family & Matrimonial Matters
- Wills, Probate, Trusts & Tax
- Company & Employment Law

2 Three Cups Walk, Fore Hill, Ely Cambs CB7 4AN
Tel: (01353) 666075 Fax: (01353) 666162
Email: info@pbw.uk.com

Also at: 4b Church Street, Isleham, Cambs CB7 5RX
Tel: (01638) 780170 Fax: (01638) 780190

**P B & W Solicitors LLP is a Limited Liability Partnership, trading as
Pooley Bendall & Watson Solicitors.**

Parish Councillors address list

Steven Baines	Emmanuel House, 8 East Fen Road, Isleham CB7 5SW Tel: 01638 780406
Derrick Beckett (Chairman)	Appleyard Farm, 1 Houghtons Lane, Isleham CB7 5SR Tel: 01638 780476
Vanessa Bruyneel-Smith	115 The Causeway, Isleham CB7 5ST Tel: 01638 781708
Paul Chaplin	Jay Jay Lodge, Waterside, Isleham CB7 5SH Tel: 01638 781745
Martin Earl	83 The Causeway, Isleham CB7 5TA Tel: 01638 780766
Jeannette Malkin	17 Little London, Isleham CB7 5SE Tel: 01638 780283
Lionel Neal	104 Beck Road, Isleham CB7 5QP Tel: 01638 780066
Clive Patterson	21 West Street, Isleham CB7 5SD Tel: 01638 780669
Hazel Thompson	9 Limestone Close, Isleham CB7 5RP Tel: 01638 780633
Roseanna Thompson	Fenrose Farm, 1 Fen Bank, Isleham CB7 5SL Tel: 01638 780994
Pauline Wilkes	6 Limestone Close, Isleham CB7 5RP Tel: 01638 780640
Diane Bayliss (Parish Clerk)	37 Croft Road, Isleham CB7 5QR Tel: 01638 781687 islehampc@btinternet.com www.isleham-village.co.uk

theWI Women's INSPIRING WOMEN Institute

At our August meeting we had an interesting talk by Rosemary Jacob about "Experiences of a Corset Consultant". Employed by Spirella, in the 1970s Rosemary went through a comprehensive training before gaining her coveted certificate.



One of the features of the Spirella corset company was that their products were made-to-measure, and never sold in shops.

Putting this training into practice led to many humorous and poignant situations for our speaker, and her description of these led to a very entertaining evening.

At the beginning of August, several members went to Southwold on a trip run by the Cambridge Federation. The weather was kind, and after a day spent on the beach and the pier, and a walk around the shops, we were treated to a visit to the theatre to see a hilarious farce, "Move over Mrs Markham".

In September we celebrated with our Harvest Supper. It was a light-hearted evening enjoyed, I hope, by all.

On 13th October we are holding an Open Evening when we hope to welcome members of local WIs and Flower Clubs and all others who are interested. Our speaker and demonstrator will be Nicholas Godfrey-Cole of 'Scent With Love', Hunstanton. Mr Godfrey-Cole is a regular exhibitor at the Sandringham Flower Show. All are welcome.

If you would like to join the WI or simply come to a meeting to see what it is like, please do come along. We meet on the second Thursday of each month in the Village Hall, 7.30 for 7.45pm, and visitors and new members are always welcome.

For further information contact:

Glenda Preece
01638 780734
gjpreece@aol.com

Serenity Beauty

*Pamper yourself and enjoy a
relaxed, professional service for
all your Beauty and Holistic needs*

Call Gemma: 07736931818

For Appointments & Details
58 Friday Street, West Row

JOYCE'S CORNER

Perfect Friend

It's good to get together
To meet and have a chat.
Letting time pass idly by
Discussing this and that.

But even more important
Then the topics we might raise
Is the pleasure found by sharing
In each other's friendly ways.

Of people that we've met and known
We often find there's one alone
Who seems to stand out from the rest,
And as a friend becomes our best.

Why this should be I cannot say.
Different things come into play.
Qualities which, when they blend,
Make for us the perfect friend.

Joyce Drayton

KARMA FARM

8 Fen Bank, Isleham

Tel: 07900 961217 / 01638 780701

- Naturally grass- and forage-fed beef
- 20 years selling direct from the Farm

New camp-site now open – see our website

www.karmafarm.co.uk

MONKHOUSE

CARPENTRY SERVICES LTD.

Carpentry & Building

CITY & GUILDS QUALIFIED

FREE ADVICE & QUOTATIONS

For all carpentry and building work

KITCHENS

WINDOWS & DOORS

EXTENSIONS

RESTORATION

GENERAL MAINTENANCE

For a professional & reliable service

Darrell Monkhouse

5 East Road, Isleham

Tel: 01638 780798 Mobile: 07808 569617



**Professional, experienced &
knowledgeable therapists
providing accurate diagnosis,
effective and lasting pain relief.**

- Back pain
- Muscle spasm, strains, sprains & tears
- Knee, ankle, hip & shoulder injuries
- Tendonitis
- Frozen shoulder
- Sciatica
- Whiplash
- Tennis & golfer's elbow
- Repetitive strain injury (RSI)
- Adolescent sports injuries



THE SPORTS INJURY CLINIC

The Sports Injury Clinic
Fordham House Estate
Newmarket Road, Fordham, CB7 5LL

Tel: 01638 724042
lee@thesportsinjuryclinic.org

www.thesportsinjuryclinic.org

Parish Council News

The following are the abbreviated and incomplete versions of the IPC minutes for the July and August 2011 meetings. Full minutes are available from the IPC and on the Isleham Village Website at www.isleham-village.co.uk/pcminutes.html.

MINUTES OF THE PARISH COUNCIL MEETING MONDAY 4th JULY

Present Cllrs Beckett, Baines, Chaplin, Patterson, Neal, H. Thompson, Wilkes, Malkin, R. Thompson, Bruyneel-Smith, CCllr Powley, Clerk: D Bayliss, 4 Parishioners
Catherine Shilton, Cambridgeshire ACRE; Oliver Cook, Jane Hollingsworth ECDC; Mark Osbourne, Sanctuary Housing; Stephen Conrad CCC

Apologies Cllr Earl, C Cllr Palmer

CAMBRIDGESHIRE ACRE – HOUSING NEEDS SURVEY

The results of the housing needs survey were presented to the council by Catherine Shilton, showing that at present 41 affordable homes are needed in the village. The council will consider appropriate sites and discuss these with Sanctuary Housing.

OPEN FORUM FOR PUBLIC PARTICIPATION

Mr Sheldrick asked the council whether he was allowed to work on the recreation ground when there are people using it. The Council have no problems with Mr Sheldrick working on the recreation ground when people are there as long as he takes due care.
Mr Ellwood asked how much interest was being paid on the public works loan and whether it had been taken out yet. He also asked for a copy of the latest plans for the new community centre. He also asked about the yellow lines on Pound Lane (see June minutes).

MATTERS ARISING

The Chairman informed the Council that Mr Cox is improving slowly.

QUALITY STATUS

The first annual report has been published on the website on the notice board and has been distributed to Councillors. Hopefully it will be included in the next issue of the *Informer*.

RECREATION GROUND MATTERS

The manhole cover has been repaired.
One of the side windows on the pavilion was smashed and has now been repaired.
Concern was raised about whether the trees on the recreation ground are being watered regularly. The Clerk will investigate this ASAP as one of the trees is looking a bit unhealthy.
Bloor Homes have still not removed two of the posts from the recreation ground.
The work that has been carried out around the MUGA is not satisfactory. Cllrs Patterson and Wilkes visited the site with the clerk and request that the account is not paid until the situation has been rectified.

ICA REPORT

It was agreed that Mr Robert Plumbly is appointed to advise the Council on the VAT issues surrounding the building of the new community centre.
In the light of the circumstances regarding this issue Cllr Beckett proposed from the chair that Isleham Parish Council agrees to let the new community centre to an ICA management committee, subject to all legal and financial matters regarding this being resolved satisfactorily. If not, then the matter will need to be reconsidered.
It was reported that the Gala Festival was a great success. A letter of thanks will be sent to the ICA fundraising committee. The Gala itself was again hugely successful and a letter of thanks will be sent to the Gala Committee.

CEMETERY & CHURCHYARD MATTERS

Mr Wilding will be tending the cemetery while Mr Cox is unwell. Another large ornament has been placed on one of the graves; the Clerk will contact the family and ask them to remove it. The hedge at the side of the Cemetery is too wide to be cut back by hand so other arrangements need to be made to cut it. The hedge at the bottom of the cemetery is overgrown with ivy; however, this does not belong to the Council but to Sanctuary housing, so a letter will be sent to them asking them to cut it back.

COUNTY & DISTRICT COUNCILLOR'S REPORT & BUSINESS

C Cllr Powley pointed out to the Council that any speed limit changes requested by the Council would have to be paid for from the Council's precept.
80% of the street lighting in Cambridgeshire is to be replaced over the next five years. There may be fewer lights but with a greater spread of light. Cllr Baines asked if

COMPLETE PROPERTY MANAGEMENT

All comercial and domestic projects undertaken.

City & Guilds Qualified, Fully Insured.

Tel: 01638 780846
Mob: 07591 157006
completepropertymanagement@ymail.com



C Cllr Powley could find out if there are any known issues with the lighting, as it seems that the brightness of a new light in East Fen Road has decreased over the year.

HIGHWAYS/FOOTPATH MATTERS

The footpath outside the Co-op has been repaired – a letter of thanks will be sent to County Highways. If a new streetlight were to be put in at Little London, it would have to be paid for by the Council as new lights only tend to be put in at accident blackspots. Bugs Alley has an elder growing out of the ground in the middle of it and some overhanging brush, which needs to be removed. The clerk will contact Mr Wilding to clear this.

A letter has been received from Mrs Burbidge concerning a tree which is overhanging Waterside Road. It was agreed that the clerk would find out who the tree belongs to; if it is Parish Council property the clerk in consultation with Cllrs Baines and R. Thompson will arrange to have the necessary work carried out up to a maximum of £1000 in line with the current financial regulations. There is a tree overhanging the end of Maltings Lane, a letter will be sent to the house owner asking them to cut it back allowing access for pedestrians. Care and Repair information will be distributed to the churches, placed in the Informer and on the notice board.

PLANNING MATTERS

Planning Applications Extension and alterations at 34 West Street, Isleham for Mr and Mrs Webber – no objection. Demolish single storey extension, construct two-storey extension and detached cart lodge at 9 Dockings Lane, Isleham for Mr and Mrs Ruddock – objection on the grounds that the development is out of keeping with the character and setting of the area. Two-storey side extension at 23A Little London, Isleham for Mr P. Clarke – no objection. **Planning Approvals** Single storey rear extension, new porch and replacement garage and woodstore at 8 West Street, Isleham for Mr and Mrs Flynn.

OTHER BUSINESS

The ‘A Vision for Isleham’ Questionnaire has been distributed at the Co-op, by the Clerk and is available on the website.

**MINUTES OF THE PARISH COUNCIL MEETING
MONDAY 8th AUGUST**

Present Cllrs Beckett, Chaplin, Neal, Patterson, H. Thompson, Wilkes, R. Thompson, Malkin, Bruyneel-Smith, Clerk: D. Bayliss, 2 Parishioners
Apologies: Cllrs Earl, Baines, C Cllrs Powley, Palmer

MATTERS ARISING

The tree on Waterside appears to be on the allotment land; however, before any work is carried out the clerk will contact Highways to see about having the branch lopped back. Mr Cox has handed in his resignation as Cemetery Keeper owing to ill health. The Council will write and thank Mr Cox for all his hard work at keeping the cemetery in pristine condition.

RECREATION GROUND MATTERS

It was agreed that the Council submit the recreation ground and play area to the Queen Elizabeth II Fields Challenge. It was agreed that an advert for a new cemetery keeper be placed on the notice-board, in the Co-Op and in the Post Office. Applications to be in to the Clerk by 1st September.

PLANNING MATTERS

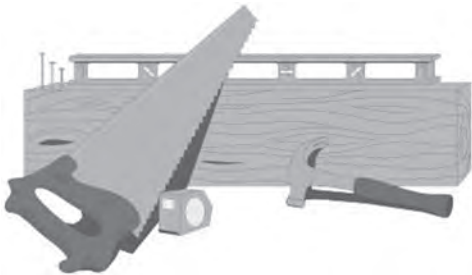
Applications Installation of 8 photovoltaic solar panels for Mr and Mrs J. Henderson, 5a West Street – no objections. **Approvals** Extension and alterations at 34 West Street, Isleham for Mr and Mrs Webber. Demolish single storey extension, construct two -storey extension and detached cart lodge at 9 Dockings Lane, Isleham for Mr and Mrs Ruddock.

ICA REPORT

Project Management The main services for the new Community Centre need to go through the middle of the current Village Hall as the tree roots come up to the edge of the hall. There are three options available to the council: Option 1 – demolish on day one – no charge
Option 2 – demolish 20 weeks in – £13,000
Option 3 – demolish kitchen and store ourselves before the project starts – £26,000

It was agreed that the Parish Council would like the project to go out to tender retaining the current village hall until 20 weeks into the contract; the council would also like to know if there would be a cost saving if the hall were demolished the beginning of the project. ■

Carpentry Services



Established 1970

For all General Carpentry
and Building Work
No Job Too Small

Tel: 01638 780 358
Mob: 07801 950 627



Grant
34 Sun Street
Kitchens/Bathrooms
Doors/Windows
Interior. Exterior
Maintenance

High Street Church

THE ARK PROJECT

The High St Church New Building - Update

As you may be aware we have now started to erect the oak construction for our new church building. Progress is going very well. If you are passing, why not stop at the gate and have a look? More details to follow in the next issue, but in the meantime, have a look at this page on the BBC Website: <http://www.bbc.co.uk/news/uk-england-cambridgeshire-14728481>. This has a short report from Look East marking the end of Phase One

SUNDAY SERVICES: All are welcome to our Sunday services throughout the year.

Morning worship: 10.30am All ages are very welcome from the very young to the very old. The children have their own activities.

Evening fellowship: 6.30pm A less formal service usually with opportunity for individual sharing. Come and hear about God's goodness! Tea, coffee and good conversation are available after both the morning and evening services.

On Sunday mornings the following children's facilities are available:

Crèche is available for babies and tots up to 3 years old: the crèche workers are very experienced and provide a safe, fun playtime for the little ones.

Junior Church, for those who are aged 3 to 7, is a fun-filled session with singing, crafts, drama and stories. The older Junior Church meet at the Village Hall. This is for children who are 7 to 11 years old. Their morning starts from 10am with a craft, followed by a wide range of activities encouraging the children to discover the Christian faith for themselves. We would love to see some new faces and visitors would be made very welcome!

Impact is the name for the 11 to 14 year olds and on a Sunday morning they receive teaching that is relevant to pre-teens/teenagers. On a Friday night this group meets socially and they all have a lot of laughs!

OTHER WEEKLY ACTIVITIES

Our midweek care structure called **High Street Life** gives a whole range of fresh initiatives to care, support and be involved in the local community. It includes: a quilting group, papercraft group, Life groups, plus Men's and Ladies' groups; a Media and Creative Arts group using modern technology to convey the message of hope; a Healthy Living group; practical DIY advice and much more. Are you new to the village? High Street Life is more than just Church on Sunday so why not contact us, we'd love to get to know you and tell you what makes us tick.

Alpha (the relevance of the gospel in today's world) and the Marriage Course (designed to help strengthen marriages) will also continue to run from time to time.

Are you interested in how to stay active in later life? If so, we are running an exercise class for the more mature on Monday afternoons at 2pm at the Chapel. Our **Rendezvous** group – for the more mature among us – meets every Tuesday afternoon at 3pm. Around 60 to 70 of us enjoy this time together each week but new faces are always welcome.

Luncheon Club is for those of retirement age and happens once a month on the second Wednesday from 12–2pm. An excellent meal for just £2 not to mention the great company! For further details of any of the above, please contact Kathryn of 01638 780652 of the Church Office.

Little Lambs is our parent/carers and toddler group which runs term time Fridays from 9.15–11.15am. Parents/carers can relax with a coffee while the children play. Each week we have a craft activity, juice time and end the morning with singing. All welcome!

So whether it's on a Sunday or midweek, we would love to see you. Why not come along, give us a call or take a look at what we do on www.highst.org.uk? If you would like to know more then please contact our church office on 01638 780985. ■

Three Rivers Group St Andrew's Parish Church

Regular Church Services

Sundays: The main service is at 9.30am. Junior Church is in the Social Centre, and in church the third Sunday of each month for All Age Worship.

Third Sunday 8am Holy Communion – Book of Common Prayer. All welcome.

Midweek services

Monday–Wednesday: 9am Morning Prayer, Fordham

Thursday, Friday: 8.15am Morning Prayer, Fordham

Monday: 3.30pm Evening Prayer, Kennett (in school during term time)

Wednesday: Evening Prayer 4.15pm Snailwell, Holy Communion 5.30pm Chippenham

Weekly Activities

Tuesday: 9am–12 noon: Coffee Morning in Social Centre

Friday: Choir Practice 6.30pm in church. All welcome. Contact Mark Liversidge 01638 781696. Bell ringing practice 7.30pm – beginners welcome! Contact Ruth Ogden, the Tower Captain, for more information.

Sundays@6: Our Youth group meets twice a month

at the Old Vicarage in Isleham; we hope that many other young people will join us. Details from Rev'd Kate or Rev'd Mike.

Priests The Rev'd Mike Banyard 01638 721616 banyardmg1@yahoo.co.uk. The Rev'd Kate Peacock 01638 723960 kate.peacock@btopenworld.com

Churchwardens Rob Savage: 01638 780218, robert.savage@islehamchurch.org.uk; Nick Carver: 01638 781116, nick.carver@islehamchurch.org.uk

Tower Captain Ruth Ogden: 01638 780646, ruth.ogden@islehamchurch.org.uk

Choir Director Mark Liversidge: 01638 781696, mark.liversidge@islehamchurch.org.uk

Webmaster Andrew Stephens: 01638 781468/780229

Service Sheet Editor Rob Savage: 01638 780218 robert.savage@islehamchurch.org.uk

For more information about the Group and St Andrew's please visit our website at www.islehamchurch.org.uk ■

Pound Lane Free Church

Pastor: Dave Hall (01638 781343 or 01638 780636, email pastor@plfc.org.uk)

Elder: Mr Michael Gee (01638 552805)

Every Sunday:

Sunday worship: 11am and 6.30pm.

Celebration of the Lord's Supper:

1st Sunday following evening service

3rd Sunday following morning service

A Crèche is available for babies to Year 3 during the morning service.

Refreshments are served after the evening services, except the first Sunday of the month.

Fellowship Lunches are served after the morning service on the third Sunday of the month.

Kingdom Kids (3 years–Year 3): 10–11.15am (Sue Thompson 01638 781343)

All Stars (Years 4–6): 10–11.15am (Mr John Martin 01638 737212)

Covies (Year 7–early 20s): 9.30–10.30am (Mr Steve Neale 01638 780717).

There is a hearing loop installed and signing for the deaf is available as well as Braille songbooks. We have a comprehensive Child Protection Policy and a CRB check has been carried out on all children's and young people's workers.

Monday:

Music Mayhem: 9.30–10.30am.

(Mrs Sue Thompson 01638 781343 Preschool children during school term only)

A fun time for your pre-school children – action songs, musical instruments and the ever-popular "Sockeroo". Followed by refreshments and a time to relax with friends whilst the children play. New members always welcome.

All Stars Fun Night: 7.00–8.15pm.

Wednesday:

Fellowship: 2.15–3.15pm.

(Mrs Sandra Rampley 01353 624733)

This caters for the more mature. They enjoy meeting together for a Bible talk, spiritual songs and prayer. Various fun evenings and meals are also organised during the year. New members are always welcome.

Church Night: 7.40–9pm.

Bible study, prayer and fellowship; for mid-teens upwards.

Thursday:

Coffee Morning: 10–11.30am.

Turn up any time between 10 and 11.30am for free tea, coffee and cakes. Chat with friends and make new friends. Open to any age. Includes an 8 minute "In the News this Week" slot in the middle.

Covies Club Night: 7–9pm.

Friday (fortnightly in members' homes):

Women's Meeting 10.30–11.45am (Sue Hall 01638 780636). Christianity Explored courses are run regularly – please ask for dates of next course.

For further information on any of the above, or if you would like to speak to Pastor Dave:

Phone: 01638 781343 (Church Office)

01638 780636 (Pastor's Home)

Email: pastor@plfc.org.uk

secretary@plfc.org.uk

Web site: www.plfc.org.uk & www.isleham.com

18–30s this is a new group for all those aged between 18 and 30 years. It's held each week, meeting in homes and once a month going out for a social event e.g. bowling or the cinema. If you are in this age range, would enjoy finding out more about the Christian life and would enjoy meeting other people of your age, why not come along and give it a try? Details from Alison or Suzi on 01638 781343.

If you have any spare time on a Thursday morning between 10.00am and 11.30am why not come along to the **plfc Coffee Morning**? We enjoy a good chat with friends both old and new, a cup of tea or coffee and a selection of sweet and savoury items to tempt our taste buds! A topical news item is looked at from a Christian perspective in the eight minute "In the News" slot then some of the gentlemen enjoy a game of dominoes. We'd love to see you and you will be sure of a very warm welcome.

Our pre-school group Music Mayhem meets from 9.30–10.30am. Anyone is welcome to come along, the sessions are free and are held in the hall of the church extension. We have a 30 minute singing time, including the M.M. "Hello" song, some action songs, musical instrument songs, parachute songs, Sockeroo the sock puppet makes an appearance and helps us choose a song and we finish with the M.M. "goodbye song". Each child receives his or her own Sockeroo sock puppet on the first birthday they are with us. From 10.00–10.30a.m. We have a play time for the children and refreshments. One of the highlights of our year is always the Christmas Nativity with the children coming dressed as angels or shepherds and the story of the birth of Jesus is told in words and pictures. ■

Bowls Report

Another season has come and gone in a flash. It has been an average season for the club with both the men and ladies finishing in mid table in their respective Ely & District leagues. In the mixed Cambridge & District Division 4, we finished third and just missed out on being promoted. As a club we have participated in approximately 90 matches in four months, so, as you can, it tell has been an intense four months!

We successfully hosted two county matches, Norfolk men visiting the club in August and Hertfordshire men in September. On both occasions, they competed against a team of Cambridgeshire men. All visitors were impressed with our facilities and complimented the village on its Bowls Club.

In our internal competitions, the finals were played over the weekend of 10th and 11th September, the winners were as follows:

	Winners	Runner- Up
Singles		
Men	Shane Dunbavin	Chris Dunkley
Handicap	Barry Grimwood	Darren Dunbavin
Ladies	Carol Wells	Rebecca Blyth
Pitcher Memorial	Robert Burling	Ivan Hymus
Telfer Trophy	Peter Doe	Ivan Hymus
Club pairs	Ken Brown & Robert Burling	
	Rebecca Blyth & Barry Clarke	

Tenrich Pairs	June Watts & Darren Dunbavin
	Len Youens & Robert Burling
Husband & Wife	Celia & Barry Clarke
	Diane & Robert Burling
Club Triples	Lionel Watts/Diane Burling/Mark Dunbavin
	John Foreman/Barry Grimwood/Andy Gillett

It was great to see 2 young bowlers complete for the men's singles title (I thought it was meant to be an old people's game!). Well done Shane who, at 17 years old, is the youngest winner of the club's oldest competition. Just a reminder to all, that the club hosts a bingo evening each Wednesday evening from 7.45pm and welcomes anyone to come and take part, why not give it a try? Probably better than watching TV!

Barry Grimwood, Club Captain

New projects - Rewires - Consumer Unit Upgrades
Minor works - Inspection and Testing

KD
Electrical Services Ltd

80 The Causeway, Isleham CB7 5SX
www.kdes.co.uk info@kdes.co.uk
07792 179438

ELECSA Approved Contractor Part P Registered Company



**COUNTRY
STYLES**

'bringing a touch
of class to your
home or garden'

Visit us at La Hogue Farm
Chippenham, Ely
Cambridgeshire. CB7 5PZ
Telephone: 01638 751566
Email: info@country-styles.com
Website: www.country-styles.com
Opening hours: Tues-Sat 10am-5pm
Sunday 10am-4pm Open bank holidays

Christmas gift ideas from Country Styles

Looking for that 'something different' item for Christmas? Visit **Country Styles** at La Hogue, we are a small independent retailer with value at heart and quality goods with good service. Whilst you are here visiting us, take the time to visit the award winning farm shop and café!

Mystical garden children & dragon's from **£50.00**

Rocking Roosters from **£8.25**

Fragrance Lamps
Destroys bacteria,
mould spores, dust
mites & removes odour
Lamp prices start **£17.99**
Fragrance prices start **£4.50**

Reed diffusers from **£24.99**

Lily Flame candles **£7.00**

FREE
prize draw!

La Hogue's Farm shop & café have teamed up with Country Styles to give their customers old and new a chance to win £50 of vouchers - **TO BE WON EVERY MONTH!** Collect an entry form from us today!

Dates for your diary:

Sat 17th & Sun 18th September: Producers Fair Sat 5th & Sun 6th November:
Christmas Tasting, Gifts Fair, Christmas Wonderland Opens Sat 3rd & Sun 4th December: Gifts Fair, Christmas Trees arrive